

Product datasheet for **CF502991**

SOCS3 Mouse Monoclonal Antibody [Clone ID: OTI3D3]

Product data:

| | |
|--------------------------------|--|
| Product Type: | Primary Antibodies |
| Clone Name: | OTI3D3 |
| Applications: | FC, IF, IHC, WB |
| Recommended Dilution: | WB 1:2000, IHC 1:150, IF 1:100, FLOW 1:100 |
| Reactivity: | Human, Mouse, Rat |
| Host: | Mouse |
| Isotype: | IgG2a |
| Clonality: | Monoclonal |
| Immunogen: | Full length human recombinant protein of human SOCS3 (NP_003946) produced in HEK293T cell. |
| Formulation: | Lyophilized powder (original buffer 1X PBS, pH 7.3, 8% trehalose) |
| Reconstitution Method: | For reconstitution, we recommend adding 100uL distilled water to a final antibody concentration of about 1 mg/mL. To use this carrier-free antibody for conjugation experiment, we strongly recommend performing another round of desalting process. (OriGene recommends Zeba Spin Desalting Columns, 7KMWCO from Thermo Scientific) |
| Purification: | Purified from mouse ascites fluids or tissue culture supernatant by affinity chromatography (protein A/G) |
| Conjugation: | Unconjugated |
| Storage: | Store at -20°C as received. |
| Stability: | Stable for 12 months from date of receipt. |
| Predicted Protein Size: | 24.6 kDa |
| Gene Name: | suppressor of cytokine signaling 3 |
| Database Link: | NP_003946 Entrez Gene 12702 Mouse Entrez Gene 89829 Rat Entrez Gene 9021 Human O14543 |



[View online »](#)

Background:

This gene encodes a member of the STAT-induced STAT inhibitor (SSI), also known as suppressor of cytokine signaling (SOCS), family. SSI family members are cytokine-inducible negative regulators of cytokine signaling. The expression of this gene is induced by various cytokines, including IL6, IL10, and interferon (IFN)-gamma. The protein encoded by this gene can bind to JAK2 kinase, and inhibit the activity of JAK2 kinase. Studies of the mouse counterpart of this gene suggested the roles of this gene in the negative regulation of fetal liver hematopoiesis, and placental development. [provided by RefSeq]

Synonyms:

ATOD4; CIS3; Cish3; SOCS-3; SSI-3; SSI3

Protein Families:

Druggable Genome

Protein Pathways:

Adipocytokine signaling pathway, Insulin signaling pathway, Jak-STAT signaling pathway, Type II diabetes mellitus, Ubiquitin mediated proteolysis

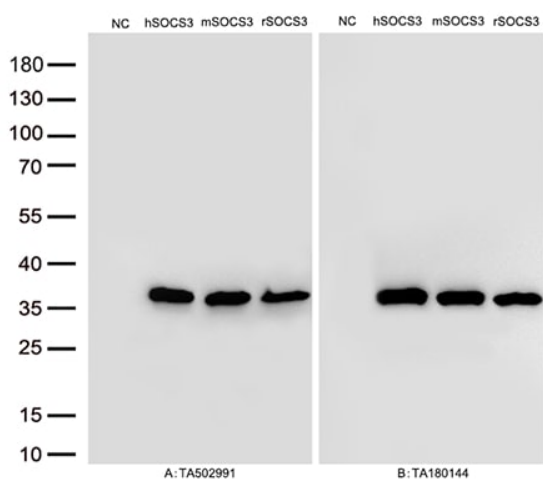
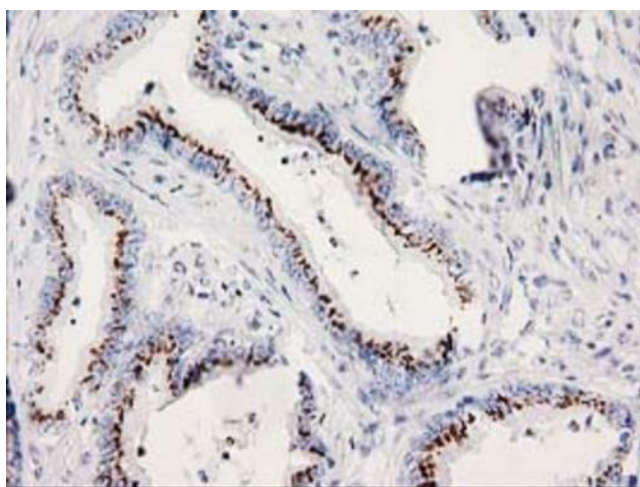
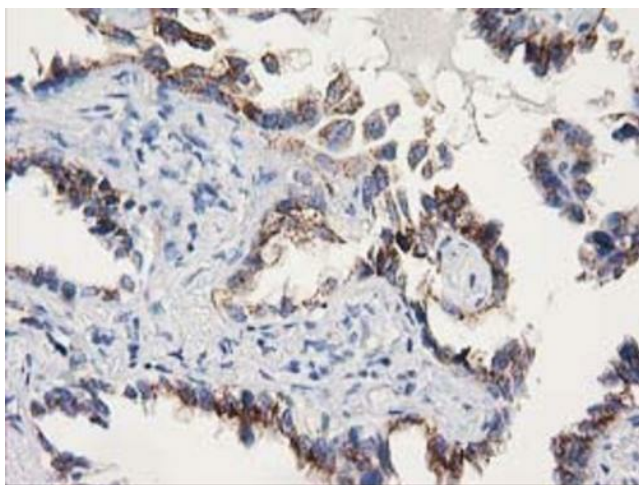
Product images:


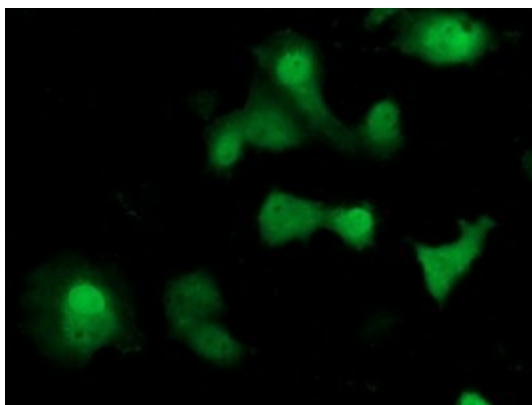
Figure A, Western blot analysis of overexpressed lysates(25ug per lane) from HEK293T cells transfected with empty plasmid ([PS100001], NC) , human SOCS3 plasmid ([RC209305], hSOCS3), mouse SOCS3 plasmid ([MR225636], mSOCS3), rat SOCS3 plasmid ([RR209908], rSOCS3) using anti-SOCS3 antibody [TA502991](1:500). Figure B, Western blot analysis of the same samples as figure A with anti-DDK antibody ([TA180144], 1:1000)



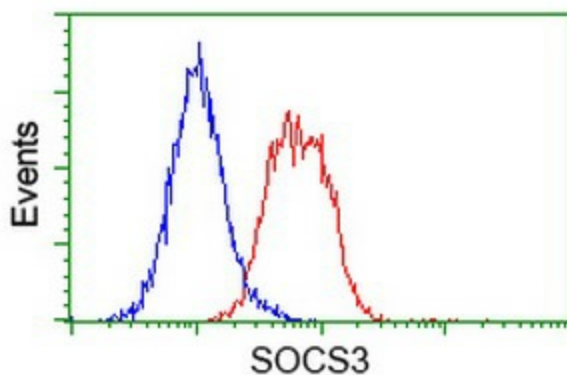
Immunohistochemical staining of paraffin-embedded Adenocarcinoma of Human colon tissue using anti-SOCS3 mouse monoclonal antibody. Heat-induced epitope retrieval by EDTA solution buffer pH 8.0 at 120°C for 3 min.



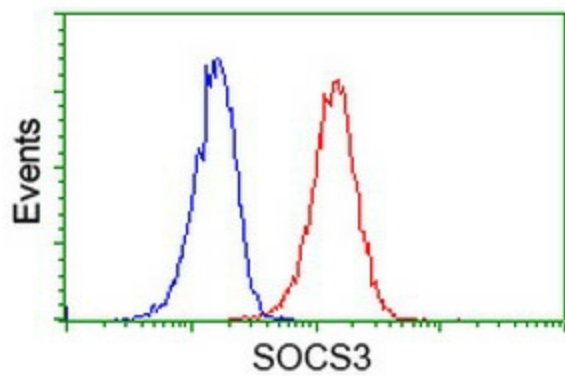
Immunohistochemical staining of paraffin-embedded Carcinoma of Human thyroid tissue using anti-SOCS3 mouse monoclonal antibody. Heat-induced epitope retrieval by EDTA solution buffer pH 8.0 at 120°C for 3 min.



Anti-SOCS3 mouse monoclonal antibody ([TA502991]) immunofluorescent staining of COS7 cells transiently transfected by pCMV6-ENTRY SOCS3 ([RC209305]).



Flow cytometric Analysis of HeLa cells, using anti-SOCS3 antibody ([TA502991]), (Red), compared to a nonspecific negative control antibody, (Blue).



Flow cytometric Analysis of Jurkat cells, using anti-SOCS3 antibody ([TA502991]), (Red), compared to a nonspecific negative control antibody, (Blue).