

## Product datasheet for **CF502927**

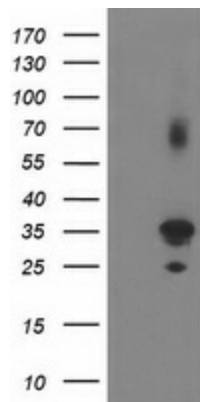
### PLEKHA3 Mouse Monoclonal Antibody [Clone ID: OTI5D11]

#### Product data:

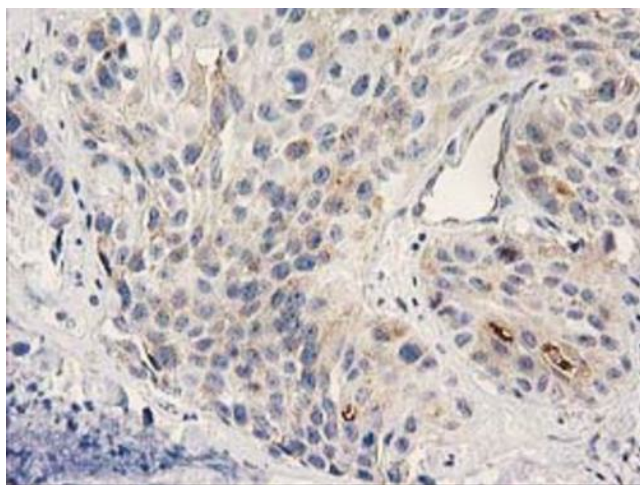
Product Type:	Primary Antibodies
Clone Name:	OTI5D11
Applications:	FC, IF, IHC, WB
Recommended Dilution:	WB 1:2000, IHC 1:150, IF 1:100, FLOW 1:100
Reactivity:	Human, Mouse, Rat
Host:	Mouse
Isotype:	IgG2b
Clonality:	Monoclonal
Immunogen:	Full length human recombinant protein of human PLEKHA3 (NP_061964) produced in HEK293T cell.
Formulation:	Lyophilized powder (original buffer 1X PBS, pH 7.3, 8% trehalose)
Reconstitution Method:	For reconstitution, we recommend adding 100uL distilled water to a final antibody concentration of about 1 mg/mL. To use this carrier-free antibody for conjugation experiment, we strongly recommend performing another round of desalting process. (OriGene recommends Zeba Spin Desalting Columns, 7KMWCO from Thermo Scientific)
Purification:	Purified from mouse ascites fluids or tissue culture supernatant by affinity chromatography (protein A/G)
Conjugation:	Unconjugated
Storage:	Store at -20°C as received.
Stability:	Stable for 12 months from date of receipt.
Predicted Protein Size:	33.7 kDa
Gene Name:	pleckstrin homology domain containing A3
Database Link:	<a href="#">NP_061964</a> <a href="#">Entrez Gene 83435 Mouse</a> <a href="#">Entrez Gene 295674 Rat</a> <a href="#">Entrez Gene 65977 Human</a> <a href="#">Q9HB20</a>
Synonyms:	FAPP1



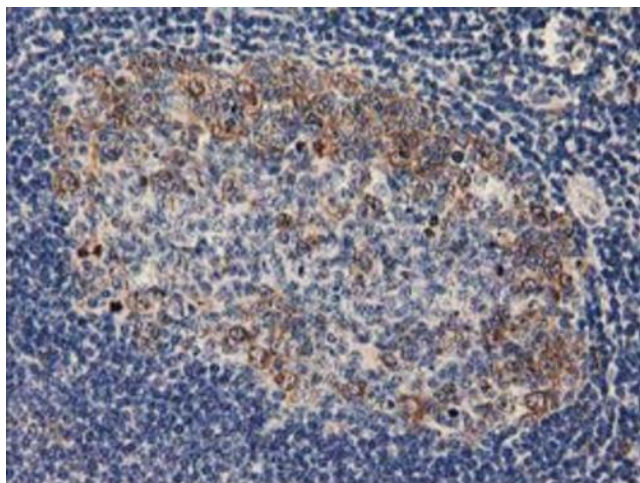
[View online »](#)

**Product images:**

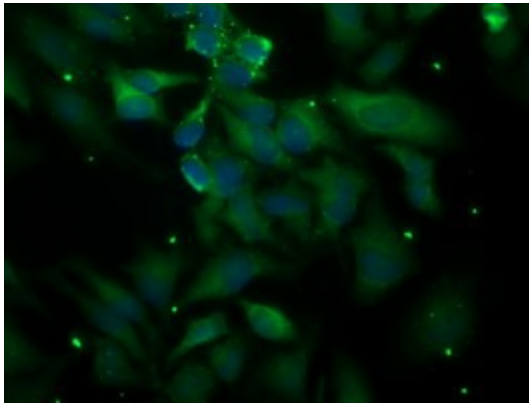
HEK293T cells were transfected with the pCMV6-ENTRY control (Cat# [PS100001], Left lane) or pCMV6-ENTRY PLEKHA3 (Cat# [RC208433], Right lane) cDNA for 48 hrs and lysed. Equivalent amounts of cell lysates (5 ug per lane) were separated by SDS-PAGE and immunoblotted with anti-PLEKHA3 (Cat# [TA502927]). Positive lysates [LY402733] (100ug) and [LC402733] (20ug) can be purchased separately from OriGene.



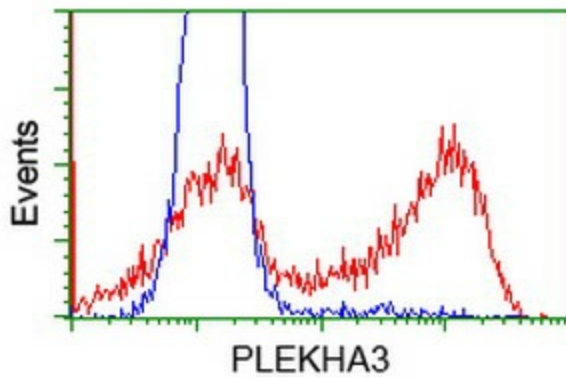
Immunohistochemical staining of paraffin-embedded Carcinoma of Human bladder tissue using anti-PLEKHA3 mouse monoclonal antibody. Heat-induced epitope retrieval by EDTA solution buffer pH 8.0 at 120°C for 3 min.



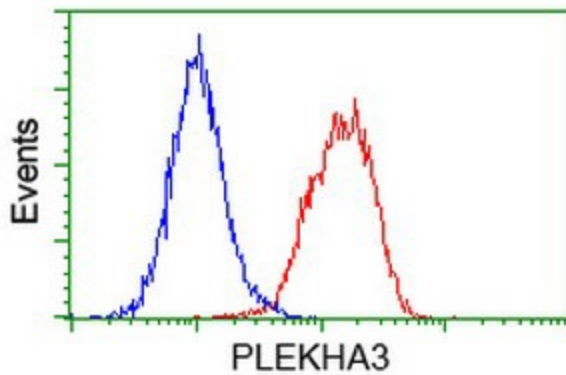
Immunohistochemical staining of paraffin-embedded Human lymph node tissue within the normal limits using anti-PLEKHA3 mouse monoclonal antibody. Heat-induced epitope retrieval by EDTA solution buffer pH 8.0 at 120°C for 3 min.



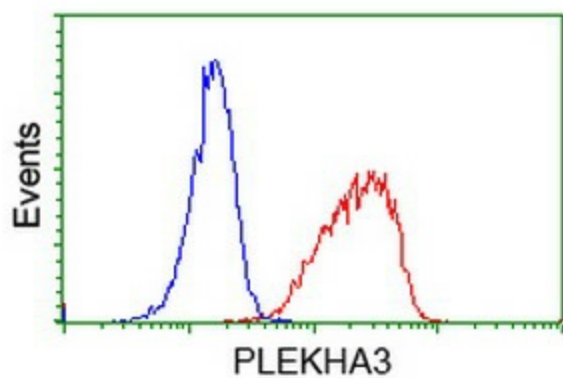
Immunofluorescent staining of HeLa cells using anti-PLEKHA3 mouse monoclonal antibody ([TA502927]).



HEK293T cells transfected with either [RC208433] overexpress plasmid (Red) or empty vector control plasmid (Blue) were immunostained by anti-PLEKHA3 antibody ([TA502927]), and then analyzed by flow cytometry.



Flow cytometric Analysis of HeLa cells, using anti-PLEKHA3 antibody ([TA502927]), (Red), compared to a nonspecific negative control antibody, (Blue).



Flow cytometric Analysis of Jurkat cells, using anti-PLEKHA3 antibody ([TA502927]), (Red), compared to a nonspecific negative control antibody, (Blue).