

## Product datasheet for **CF502919**

### **FGFR2 Mouse Monoclonal Antibody [Clone ID: OTI1H5]**

#### **Product data:**

<b>Product Type:</b>	Primary Antibodies
<b>Clone Name:</b>	OTI1H5
<b>Applications:</b>	IF, IHC, WB
<b>Recommended Dilution:</b>	WB 1:2000, IHC 1:150, IF 1:100, FLOW 1:100
<b>Reactivity:</b>	Human, Mouse, Rat
<b>Host:</b>	Mouse
<b>Isotype:</b>	IgG2a
<b>Clonality:</b>	Monoclonal
<b>Immunogen:</b>	Full length human recombinant protein of human FGFR2 (NP_000132) produced in HEK293T cell.
<b>Formulation:</b>	Lyophilized powder (original buffer 1X PBS, pH 7.3, 8% trehalose)
<b>Reconstitution Method:</b>	For reconstitution, we recommend adding 100uL distilled water to a final antibody concentration of about 1 mg/mL. To use this carrier-free antibody for conjugation experiment, we strongly recommend performing another round of desalting process. (OriGene recommends Zeba Spin Desalting Columns, 7KMWCO from Thermo Scientific)
<b>Purification:</b>	Purified from mouse ascites fluids or tissue culture supernatant by affinity chromatography (protein A/G)
<b>Storage:</b>	Store at -20°C as received.
<b>Stability:</b>	Stable for 12 months from date of receipt.
<b>Predicted Protein Size:</b>	89.7 kDa
<b>Gene Name:</b>	Homo sapiens fibroblast growth factor receptor 2 (FGFR2), transcript variant 1, mRNA.
<b>Database Link:</b>	<a href="#">NP_000132</a> Entrez Gene <a href="#">14183</a> MouseEntrez Gene <a href="#">25022</a> RatEntrez Gene <a href="#">2263</a> Human



[View online »](#)

**Background:**

The protein encoded by this gene is a member of the fibroblast growth factor receptor family, where amino acid sequence is highly conserved between members and throughout evolution. FGFR family members differ from one another in their ligand affinities and tissue distribution. A full-length representative protein consists of an extracellular region, composed of three immunoglobulin-like domains, a single hydrophobic membrane-spanning segment and a cytoplasmic tyrosine kinase domain. The extracellular portion of the protein interacts with fibroblast growth factors, setting in motion a cascade of downstream signals, ultimately influencing mitogenesis and differentiation. This particular family member is a high-affinity receptor for acidic, basic and/or keratinocyte growth factor, depending on the isoform. Mutations in this gene are associated with Crouzon syndrome, Pfeiffer syndrome, Craniosynostosis, Apert syndrome, Jackson-Weiss syndrome, Beare-Stevenson cutis gyrata syndrome, Saethre-Chotzen syndrome, and syndromic craniosynostosis. Multiple alternatively spliced transcript variants encoding different isoforms have been noted for this gene. [provided by RefSeq]

**Synonyms:**

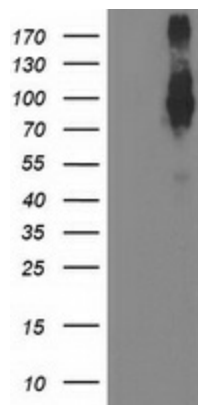
BBDS; BEK; BFR-1; CD332; CEK3; CFD1; ECT1; JWS; K-SAM; KGFR; TK14; TK25

**Protein Families:**

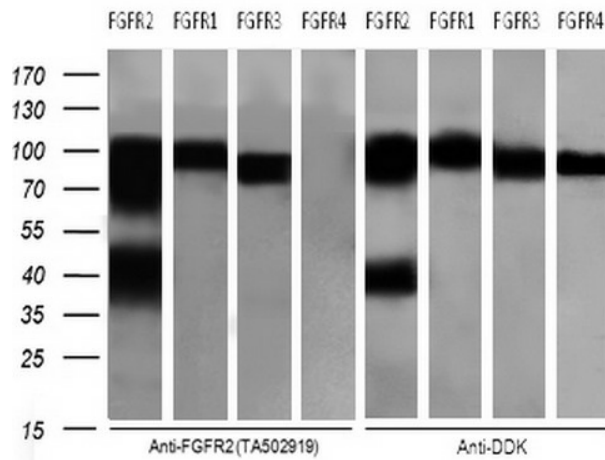
Druggable Genome, Protein Kinase, Secreted Protein, Transmembrane

**Protein Pathways:**

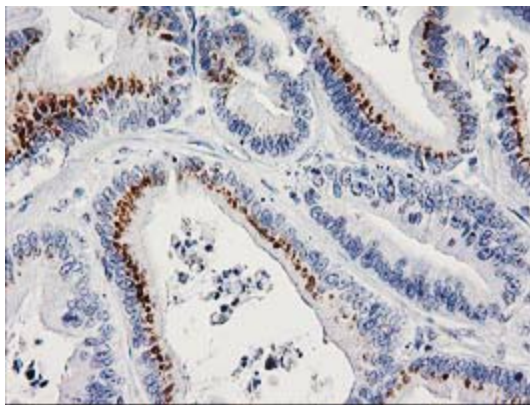
Endocytosis, MAPK signaling pathway, Pathways in cancer, Prostate cancer, Regulation of actin cytoskeleton

**Product images:**

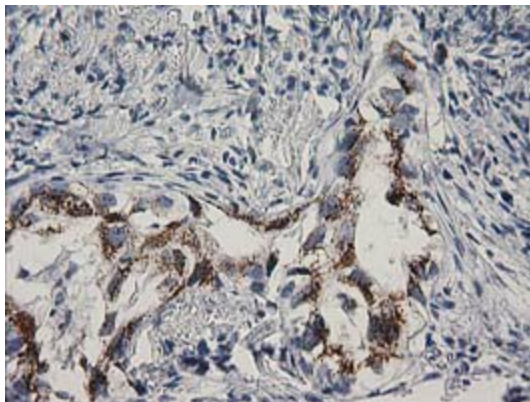
HEK293T cells were transfected with the pCMV6-ENTRY control (Left lane) or pCMV6-ENTRY FGFR2 ([RC217098], Right lane) cDNA for 48 hrs and lysed. Equivalent amounts of cell lysates (5 ug per lane) were separated by SDS-PAGE and immunoblotted with anti-FGFR2. Positive lysates [LY400050] (100ug) and [LC400050] (20ug) can be purchased separately from OriGene.



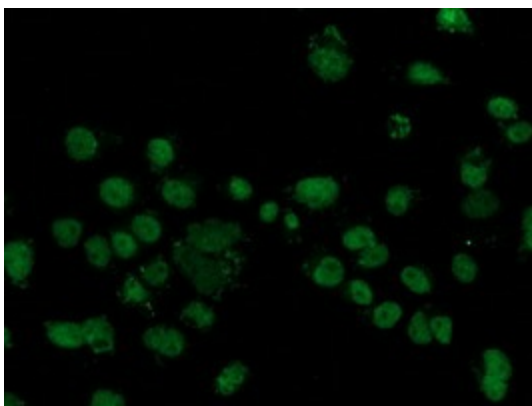
Cross-Reactivity of anti-FGFR2 ([TA502919]) with FGFR1 and FGFR3, not with FGFR4. HEK293T cells were transfected with the DDK (FLAG)-tagged DNAs of FGFR2 ([RC217098]), FGFR1 ([RC202080]), FGFR3 ([RC215533]), FGFR4 ([RC204230]) cDNA for 48 hrs and lysed. Equivalent amounts of cell lysates (5 ug per lane) were separated by SDS-PAGE and immunoblotted with anti-FGFR2 ([TA502919]). (1:500) and anti-DDK (1:2000), respectively.



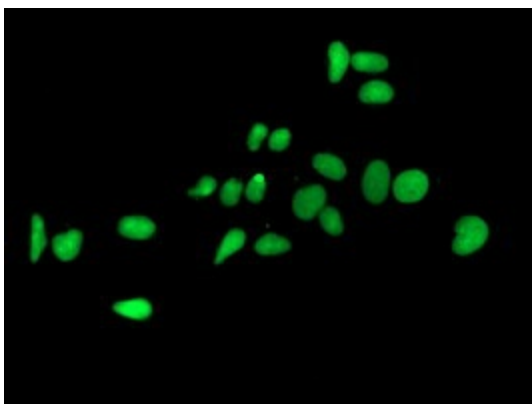
Immunohistochemical staining of paraffin-embedded Adenocarcinoma of Human colon tissue using anti-FGFR2 mouse monoclonal antibody. (Heat-induced epitope retrieval by 10mM citric buffer, pH6.0, 100°C for 10min, [TA502919])



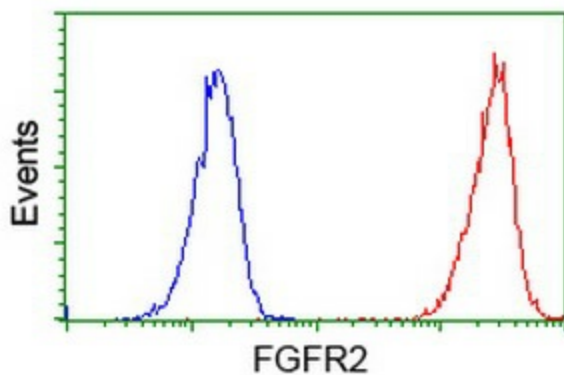
Immunohistochemical staining of paraffin-embedded Carcinoma of Human lung tissue using anti-FGFR2 mouse monoclonal antibody. (Heat-induced epitope retrieval by 10mM citric buffer, pH6.0, 100°C for 10min, [TA502919])



Anti-FGFR2 mouse monoclonal antibody ([TA502919]) immunofluorescent staining of COS7 cells transiently transfected by pCMV6-ENTRY FGFR2 ([RC217098]).



Immunofluorescent staining of HeLa cells using anti-FGFR2 mouse monoclonal antibody ([TA502919]).



Flow cytometric Analysis of Jurkat cells, using anti-FGFR2 antibody ([TA502919]), (Red), compared to a nonspecific negative control antibody, (Blue).