

Product datasheet for **CF502916**

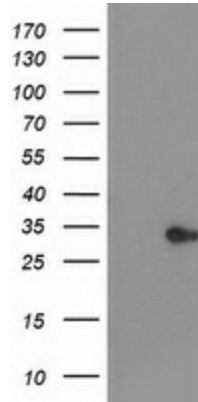
HDHD2 Mouse Monoclonal Antibody [Clone ID: OTI2E11]

Product data:

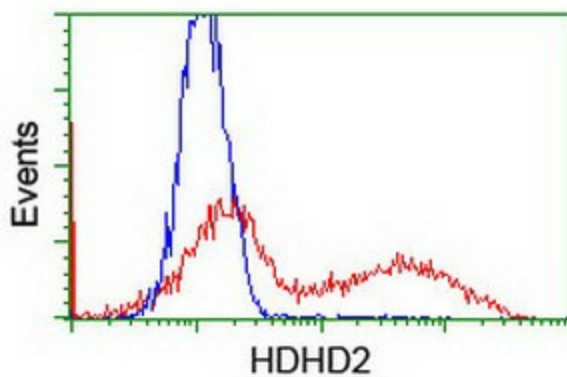
| | |
|-------------------------|--|
| Product Type: | Primary Antibodies |
| Clone Name: | OTI2E11 |
| Applications: | FC, WB |
| Recommended Dilution: | WB 1:2000, FLOW 1:100 |
| Reactivity: | Human, Mouse, Rat |
| Host: | Mouse |
| Isotype: | IgG1 |
| Clonality: | Monoclonal |
| Immunogen: | Full length human recombinant protein of human HDHD2(NP_115500) produced in HEK293 cell. |
| Formulation: | Lyophilized powder (original buffer 1X PBS, pH 7.3, 8% trehalose) |
| Reconstitution Method: | For reconstitution, we recommend adding 100uL distilled water to a final antibody concentration of about 1 mg/mL. To use this carrier-free antibody for conjugation experiment, we strongly recommend performing another round of desalting process. (OriGene recommends Zeba Spin Desalting Columns, 7KMWCO from Thermo Scientific) |
| Purification: | Purified from mouse ascites fluids or tissue culture supernatant by affinity chromatography (protein A/G) |
| Conjugation: | Unconjugated |
| Storage: | Store at -20°C as received. |
| Stability: | Stable for 12 months from date of receipt. |
| Predicted Protein Size: | 28.4 kDa |
| Gene Name: | haloacid dehalogenase like hydrolase domain containing 2 |
| Database Link: | NP_115500 Entrez Gene 84064 Human Q9HOR4 |
| Synonyms: | 3110052N05Rik; HEL-S-301 |



[View online »](#)

Product images:

HEK293T cells were transfected with the pCMV6-ENTRY control (Left lane) or pCMV6-ENTRY HDHD2 ([RC205967], Right lane) cDNA for 48 hrs and lysed. Equivalent amounts of cell lysates (5 ug per lane) were separated by SDS-PAGE and immunoblotted with anti-HDHD2. Positive lysates [LY403144] (100ug) and [LC403144] (20ug) can be purchased separately from OriGene.



HEK293T cells transfected with either [RC205967] overexpress plasmid (Red) or empty vector control plasmid (Blue) were immunostained by anti-HDHD2 antibody ([TA502916]), and then analyzed by flow cytometry.