

Product datasheet for **CF502902**

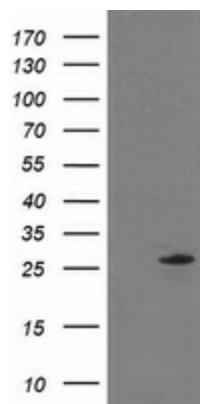
C1orf50 Mouse Monoclonal Antibody [Clone ID: OTI2C1]

Product data:

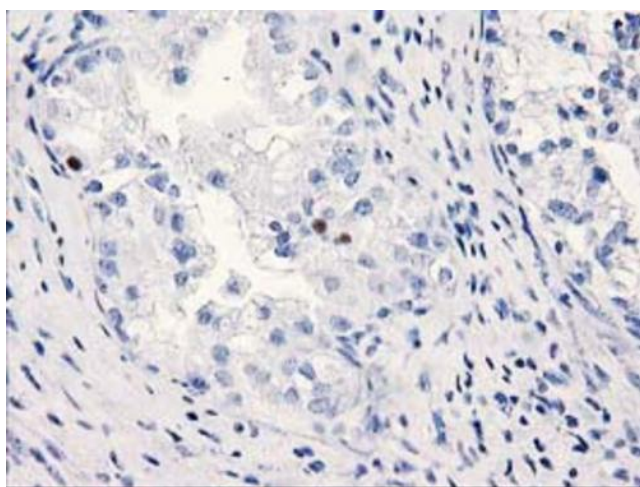
Product Type:	Primary Antibodies
Clone Name:	OTI2C1
Applications:	FC, IF, IHC, WB
Recommended Dilution:	WB 1:2000, IHC 1:150, IF 1:100, FLOW 1:100
Reactivity:	Human
Host:	Mouse
Isotype:	IgG1
Clonality:	Monoclonal
Immunogen:	Full length human recombinant protein of human C1orf50 (NP_077002) produced in HEK293T cell.
Formulation:	Lyophilized powder (original buffer 1X PBS, pH 7.3, 8% trehalose)
Reconstitution Method:	For reconstitution, we recommend adding 100uL distilled water to a final antibody concentration of about 1 mg/mL. To use this carrier-free antibody for conjugation experiment, we strongly recommend performing another round of desalting process. (OriGene recommends Zeba Spin Desalting Columns, 7KMWCO from Thermo Scientific)
Purification:	Purified from mouse ascites fluids or tissue culture supernatant by affinity chromatography (protein A/G)
Conjugation:	Unconjugated
Storage:	Store at -20°C as received.
Stability:	Stable for 12 months from date of receipt.
Predicted Protein Size:	21.7 kDa
Gene Name:	chromosome 1 open reading frame 50
Database Link:	NP_077002 Entrez Gene 79078 Human Q9BV19
Synonyms:	MGC955



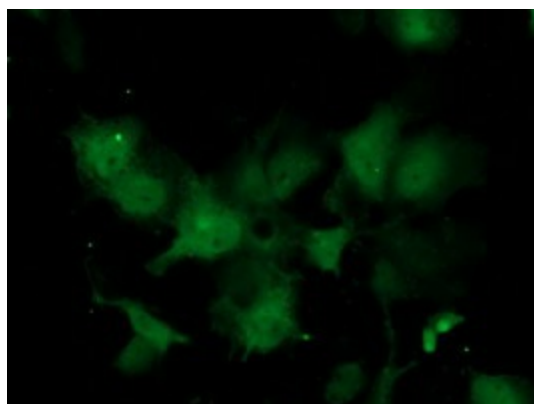
[View online »](#)

Product images:

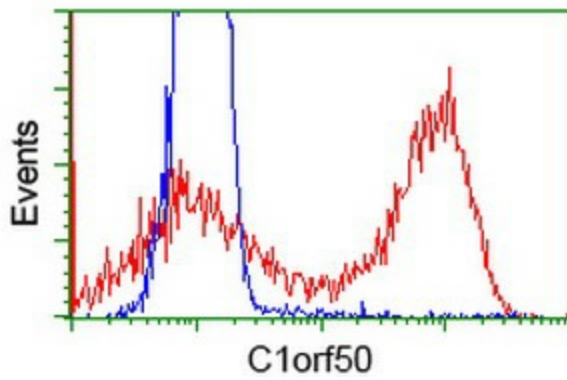
HEK293T cells were transfected with the pCMV6-ENTRY control (Left lane) or pCMV6-ENTRY C1orf50 ([RC200134], Right lane) cDNA for 48 hrs and lysed. Equivalent amounts of cell lysates (5 ug per lane) were separated by SDS-PAGE and immunoblotted with anti-C1orf50. Positive lysates [LY411368] (100ug) and [LC411368] (20ug) can be purchased separately from OriGene.



Immunohistochemical staining of paraffin-embedded Adenocarcinoma of Human ovary tissue using anti-C1orf50 mouse monoclonal antibody. (Heat-induced epitope retrieval by 10mM citric buffer, pH6.0, 100°C for 10min, [TA502902])



Anti-C1orf50 mouse monoclonal antibody ([TA502902]) immunofluorescent staining of COS7 cells transiently transfected by pCMV6-ENTRY C1orf50 ([RC200134]).



HEK293T cells transfected with either [RC200134] overexpress plasmid (Red) or empty vector control plasmid (Blue) were immunostained by anti-C1orf50 antibody ([TA502902]), and then analyzed by flow cytometry.