

Product datasheet for **CF502840**

ALDH1A3 Mouse Monoclonal Antibody [Clone ID: OTI4A3]

Product data:

Product Type:	Primary Antibodies
Clone Name:	OTI4A3
Applications:	IHC, WB
Recommended Dilution:	WB 1:200~2000, IHC 1:150
Reactivity:	Human, Mouse, Rat
Host:	Mouse
Isotype:	IgG1
Clonality:	Monoclonal
Immunogen:	Human recombinant protein fragment corresponding to amino acids 1-100 and 413-512 of human ALDH1A3 (NP_000648) produced in E.coli.
Formulation:	Lyophilized powder (original buffer 1X PBS, pH 7.3, 8% trehalose)
Reconstitution Method:	For reconstitution, we recommend adding 100uL distilled water to a final antibody concentration of about 1 mg/mL. To use this carrier-free antibody for conjugation experiment, we strongly recommend performing another round of desalting process. (OriGene recommends Zeba Spin Desalting Columns, 7KMWCO from Thermo Scientific)
Purification:	Purified from mouse ascites fluids or tissue culture supernatant by affinity chromatography (protein A/G)
Conjugation:	Unconjugated
Storage:	Store at -20°C as received.
Stability:	Stable for 12 months from date of receipt.
Predicted Protein Size:	55.9 kDa
Gene Name:	aldehyde dehydrogenase 1 family member A3
Database Link:	NP_000684 Entrez Gene 220 Human P47895



[View online »](#)

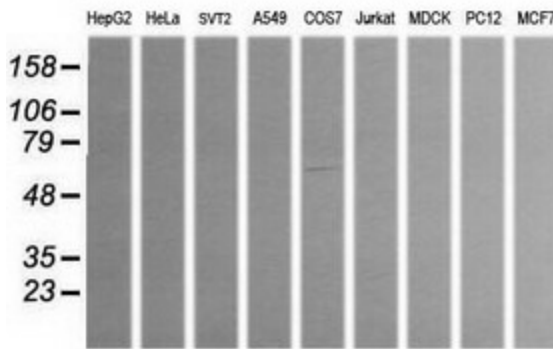
Background: Aldehyde dehydrogenase isozymes are thought to play a major role in the detoxification of aldehydes generated by alcohol metabolism and lipid peroxidation. The enzyme encoded by this gene uses retinal as a substrate, either in a free or cellular retinol-binding protein form. [provided by RefSeq, Jul 2008]

Synonyms: ALDH1A6; ALDH6; MCOP8; RALDH3

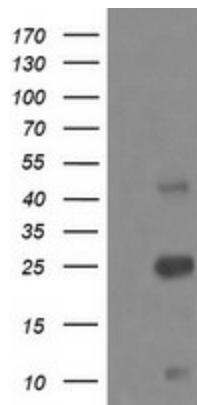
Protein Families: Druggable Genome

Protein Pathways: Drug metabolism - cytochrome P450, Glycolysis / Gluconeogenesis, Histidine metabolism, Metabolic pathways, Metabolism of xenobiotics by cytochrome P450, Phenylalanine metabolism, Tyrosine metabolism

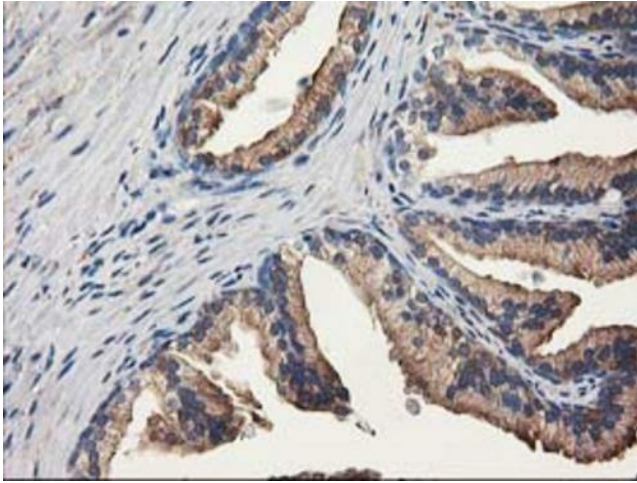
Product images:



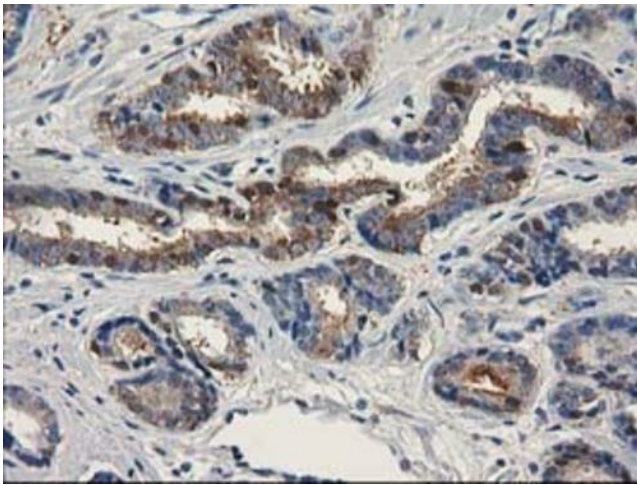
Western blot analysis of extracts (35ug) from 9 different cell lines by using anti-ALDH1A3 monoclonal antibody (HepG2: human; HeLa: human; SVT2: mouse; A549: human; COS7: monkey; Jurkat: human; MDCK: canine; PC12: rat; MCF7: human).



Negative control *E. coli* lysate (Left lane) or *E. coli* lysate containing recombinant protein fragment for human ALDH1A3 (NP_000648) gene (the fusion of amino acids 1-100 and 413-512) (Right lane). Equivalent amounts (5 ug per lane) were separated by SDS-PAGE and then immunoblotted with anti-ALDH1A3.



Immunohistochemical staining of paraffin-embedded Human prostate tissue within the normal limits using anti-ALDH1A3 mouse monoclonal antibody. Heat-induced epitope retrieval by EDTA solution buffer pH 8.0 at 120°C for 3 min.



Immunohistochemical staining of paraffin-embedded Carcinoma of Human prostate tissue using anti-ALDH1A3 mouse monoclonal antibody. Heat-induced epitope retrieval by EDTA solution buffer pH 8.0 at 120°C for 3 min.