

Product datasheet for **CF502806**

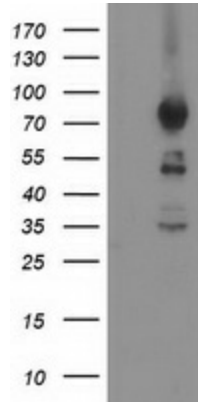
ASCC2 Mouse Monoclonal Antibody [Clone ID: OT11E8]

Product data:

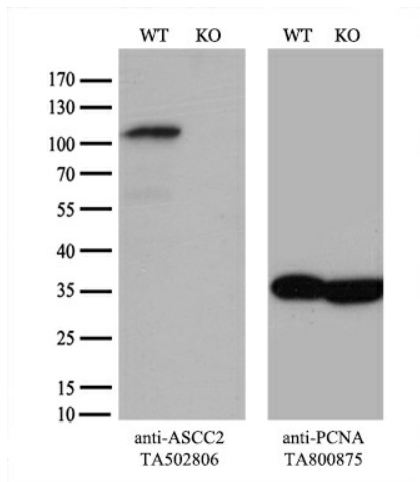
Product Type:	Primary Antibodies
Clone Name:	OT11E8
Applications:	FC, IF, WB
Recommended Dilution:	WB 1:500, IF 1:100, FLOW 1:100
Reactivity:	Human, Mouse, Rat
Host:	Mouse
Isotype:	IgG1
Clonality:	Monoclonal
Immunogen:	Full length human recombinant protein of human ASCC2 (NP_115580) produced in HEK293T cell.
Formulation:	Lyophilized powder (original buffer 1X PBS, pH 7.3, 8% trehalose)
Reconstitution Method:	For reconstitution, we recommend adding 100uL distilled water to a final antibody concentration of about 1 mg/mL. To use this carrier-free antibody for conjugation experiment, we strongly recommend performing another round of desalting process. (OriGene recommends Zeba Spin Desalting Columns, 7KMWCO from Thermo Scientific)
Purification:	Purified from mouse ascites fluids or tissue culture supernatant by affinity chromatography (protein A/G)
Conjugation:	Unconjugated
Storage:	Store at -20°C as received.
Stability:	Stable for 12 months from date of receipt.
Predicted Protein Size:	86.2 kDa
Gene Name:	activating signal cointegrator 1 complex subunit 2
Database Link:	NP_115580 Entrez Gene 84164 Human Q9H1I8
Synonyms:	ASC1p100; p100
Protein Families:	Druggable Genome, Transcription Factors



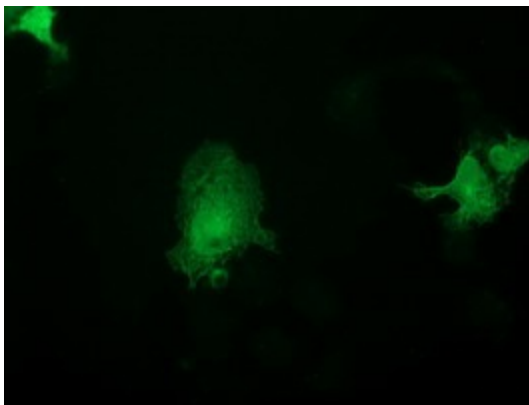
[View online »](#)

Product images:


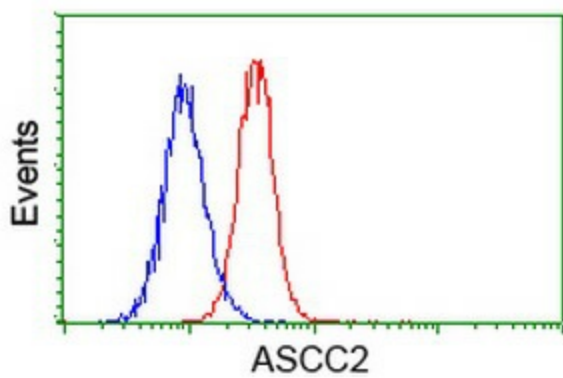
HEK293T cells were transfected with the pCMV6-ENTRY control (Cat# [PS100001], Left lane) or pCMV6-ENTRY ASCC2 (Cat# [RC203391], Right lane) cDNA for 48 hrs and lysed. Equivalent amounts of cell lysates (5 ug per lane) were separated by SDS-PAGE and immunoblotted with anti-ASCC2 (Cat# [TA502806]). Positive lysates [LY403150] (100ug) and [LC403150] (20ug) can be purchased separately from OriGene.



Equivalent amounts of cell lysates (10 ug per lane) of wild-type HeLa cells (WT, Cat# LC810HELA) and ASCC2-Knockout HeLa cells (KO, Cat# [LC833296]) were separated by SDS-PAGE and immunoblotted with anti-ASCC2 monoclonal antibody [TA502806] (1:1000). Then the blotted membrane was stripped and reprobed with anti-PCNA antibody as a loading control.



Anti-ASCC2 mouse monoclonal antibody ([TA502806]) immunofluorescent staining of COS7 cells transiently transfected by pCMV6-ENTRY ASCC2 ([RC203391]).



Flow cytometric Analysis of HeLa cells, using anti-ASCC2 antibody ([TA502806]), (Red), compared to a nonspecific negative control antibody (TA50011), (Blue).