

## Product datasheet for **CF502774**

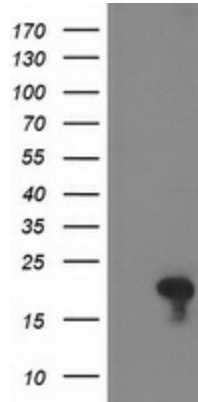
### FLYWCH2 Mouse Monoclonal Antibody [Clone ID: OTI3G3]

#### Product data:

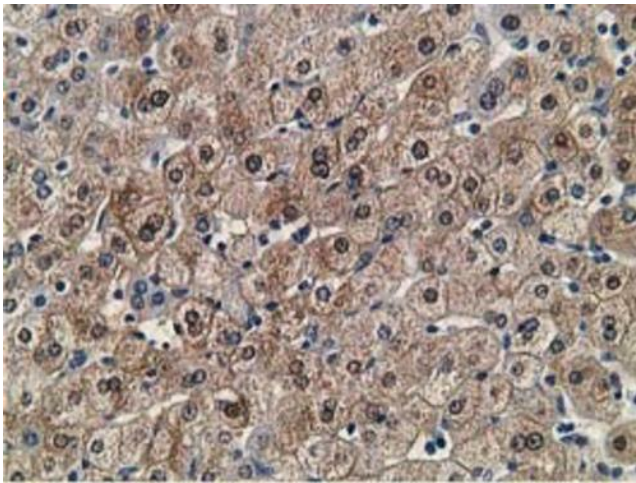
Product Type:	Primary Antibodies
Clone Name:	OTI3G3
Applications:	FC, IF, IHC, WB
Recommended Dilution:	WB 1:2000, IHC 1:150, IF 1:100, FLOW 1:100
Reactivity:	Human
Host:	Mouse
Isotype:	IgG1
Clonality:	Monoclonal
Immunogen:	Full length human recombinant protein of human FLYWCH2 (NP_612448) produced in HEK293T cell.
Formulation:	Lyophilized powder (original buffer 1X PBS, pH 7.3, 8% trehalose)
Reconstitution Method:	For reconstitution, we recommend adding 100uL distilled water to a final antibody concentration of about 1 mg/mL. To use this carrier-free antibody for conjugation experiment, we strongly recommend performing another round of desalting process. (OriGene recommends Zeba Spin Desalting Columns, 7KMWCO from Thermo Scientific)
Purification:	Purified from mouse ascites fluids or tissue culture supernatant by affinity chromatography (protein A/G)
Conjugation:	Unconjugated
Storage:	Store at -20°C as received.
Stability:	Stable for 12 months from date of receipt.
Predicted Protein Size:	14.4 kDa
Gene Name:	FLYWCH family member 2
Database Link:	<a href="#">NP_612448</a> <a href="#">Entrez Gene 114984 Human</a> <a href="#">Q96CP2</a>
Synonyms:	FLYWCH family member 2; OTTHUMP00000159209



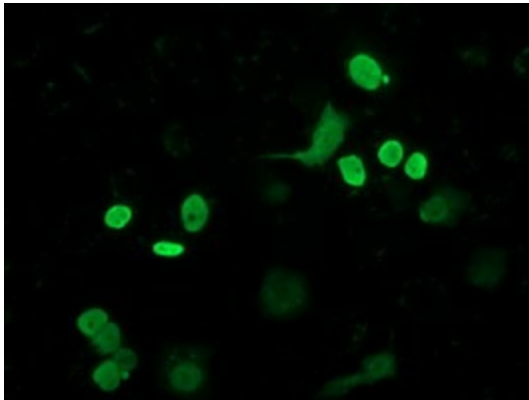
[View online »](#)

**Product images:**

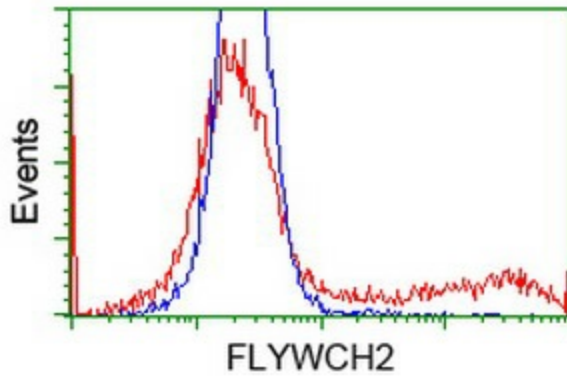
HEK293T cells were transfected with the pCMV6-ENTRY control (Cat# [PS100001], Left lane) or pCMV6-ENTRY FLYWCH2 (Cat# [RC204275], Right lane) cDNA for 48 hrs and lysed. Equivalent amounts of cell lysates (5 ug per lane) were separated by SDS-PAGE and immunoblotted with anti-FLYWCH2 (Cat# [TA502774]). Positive lysates [LY408693] (100ug) and [LC408693] (20ug) can be purchased separately from OriGene.



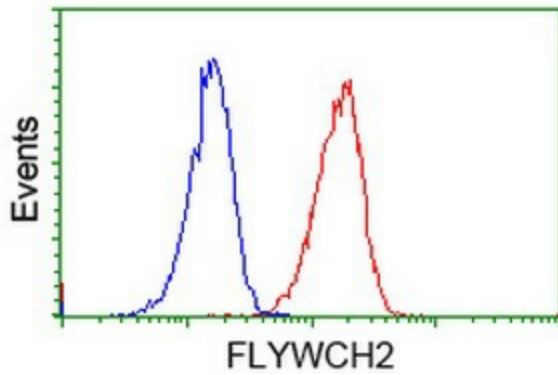
Immunohistochemical staining of paraffin-embedded Human liver tissue within the normal limits using anti-FLYWCH2 mouse monoclonal antibody. (Heat-induced epitope retrieval by 10mM citric buffer, pH6.0, 100°C for 10min, [TA502774])



Anti-FLYWCH2 mouse monoclonal antibody ([TA502774]) immunofluorescent staining of COS7 cells transiently transfected by pCMV6-ENTRY FLYWCH2 ([RC204275]).



HEK293T cells transfected with either [RC204275] overexpress plasmid (Red) or empty vector control plasmid (Blue) were immunostained by anti-FLYWCH2 antibody ([TA502774]), and then analyzed by flow cytometry.



Flow cytometric Analysis of Jurkat cells, using anti-FLYWCH2 antibody ([TA502774]), (Red), compared to a nonspecific negative control antibody, (Blue).