

## Product datasheet for **CF502761**

### NDUFA7 Mouse Monoclonal Antibody [Clone ID: OTI2C3]

#### Product data:

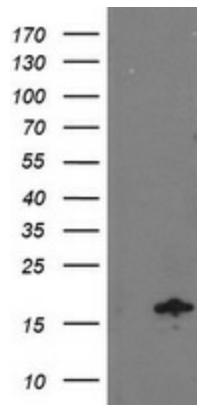
Product Type:	Primary Antibodies
Clone Name:	OTI2C3
Applications:	FC, IHC, WB
Recommended Dilution:	WB 1:2000, IHC 1:150, FLOW 1:100
Reactivity:	Human, Mouse, Rat
Host:	Mouse
Isotype:	IgG1
Clonality:	Monoclonal
Immunogen:	Full length human recombinant protein of human NDUFA7 (NP_004992) produced in HEK293T cell.
Formulation:	Lyophilized powder (original buffer 1X PBS, pH 7.3, 8% trehalose)
Reconstitution Method:	For reconstitution, we recommend adding 100uL distilled water to a final antibody concentration of about 1 mg/mL. To use this carrier-free antibody for conjugation experiment, we strongly recommend performing another round of desalting process. (OriGene recommends Zeba Spin Desalting Columns, 7KMWCO from Thermo Scientific)
Purification:	Purified from mouse ascites fluids or tissue culture supernatant by affinity chromatography (protein A/G)
Conjugation:	Unconjugated
Storage:	Store at -20°C as received.
Stability:	Stable for 12 months from date of receipt.
Predicted Protein Size:	12.4 kDa
Gene Name:	NADH:ubiquinone oxidoreductase subunit A7
Database Link:	<a href="#">NP_004992</a> <a href="#">Entrez Gene 66416 Mouse</a> <a href="#">Entrez Gene 299643 Rat</a> <a href="#">Entrez Gene 4701 Human</a> <a href="#">O95182</a>
Synonyms:	B14.5a; Cl-B14.5a



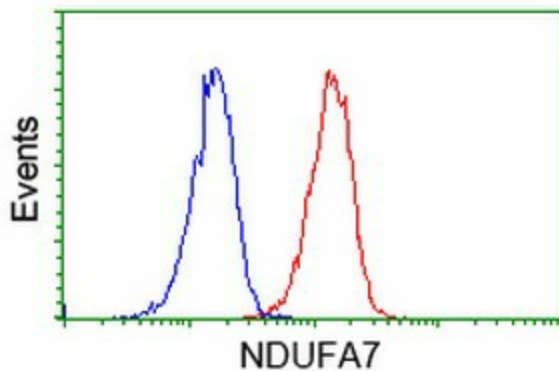
[View online »](#)

**Protein Pathways:** Alzheimer's disease, Huntington's disease, Metabolic pathways, Oxidative phosphorylation, Parkinson's disease

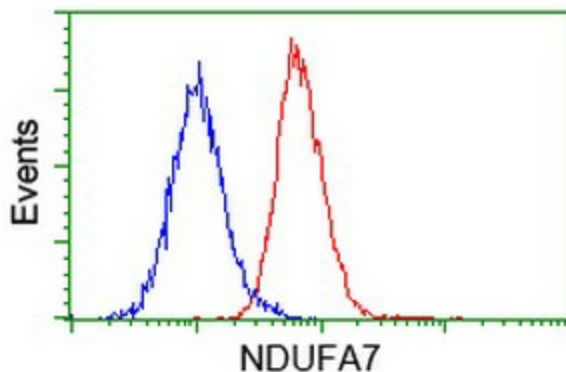
**Product images:**



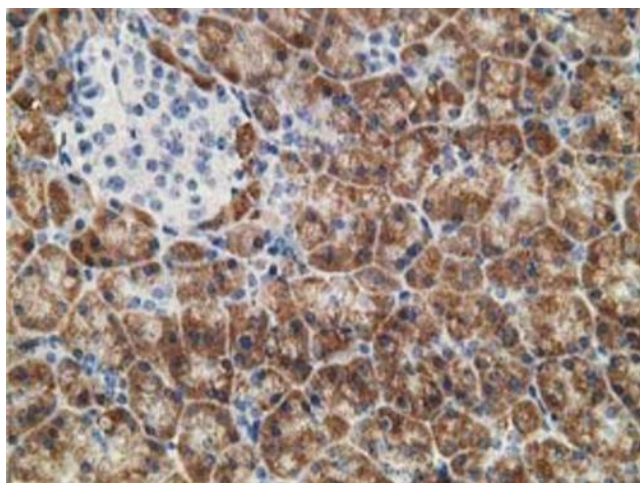
HEK293T cells were transfected with the pCMV6-ENTRY control (Left lane) or pCMV6-ENTRY NDUFA7 ([RC200534], Right lane) cDNA for 48 hrs and lysed. Equivalent amounts of cell lysates (5 ug per lane) were separated by SDS-PAGE and immunoblotted with anti-NDUFA7. Positive lysates [LY417603] (100ug) and [LC417603] (20ug) can be purchased separately from OriGene.



Flow cytometric Analysis of Jurkat cells, using anti-NDUFA7 antibody ([TA502761]), (Red), compared to a nonspecific negative control antibody, (Blue).



Flow cytometric Analysis of HeLa cells, using anti-NDUFA7 antibody ([TA502761]), (Red), compared to a nonspecific negative control antibody, (Blue).



Immunohistochemical staining of paraffin-embedded Human pancreas tissue within the normal limits using anti-NDUFA7 mouse monoclonal antibody. (Heat-induced epitope retrieval by 10mM citric buffer, pH6.0, 100°C for 10min, [TA502761])