

Product datasheet for **CF502707**

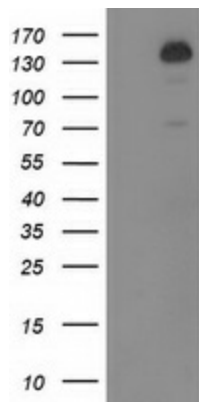
TBC1D4 Mouse Monoclonal Antibody [Clone ID: OT15A6]

Product data:

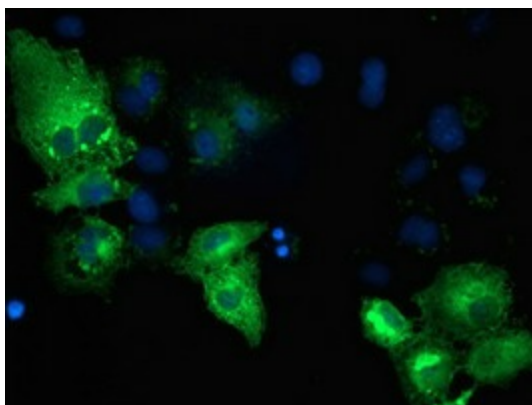
Product Type:	Primary Antibodies
Clone Name:	OT15A6
Applications:	FC, IF, WB
Recommended Dilution:	WB 1:2000, IF 1:100, FLOW 1:100
Reactivity:	Human, Mouse, Rat
Host:	Mouse
Isotype:	IgG2a
Clonality:	Monoclonal
Immunogen:	Full length human recombinant protein of human TBC1D4 (NP_0055647) produced in HEK293T cell.
Formulation:	Lyophilized powder (original buffer 1X PBS, pH 7.3, 8% trehalose)
Reconstitution Method:	For reconstitution, we recommend adding 100uL distilled water to a final antibody concentration of about 1 mg/mL. To use this carrier-free antibody for conjugation experiment, we strongly recommend performing another round of desalting process. (OriGene recommends Zeba Spin Desalting Columns, 7KMWCO from Thermo Scientific)
Purification:	Purified from mouse ascites fluids or tissue culture supernatant by affinity chromatography (protein A/G)
Conjugation:	Unconjugated
Storage:	Store at -20°C as received.
Stability:	Stable for 12 months from date of receipt.
Predicted Protein Size:	146.4 kDa
Gene Name:	TBC1 domain family member 4
Database Link:	NP_055647 Entrez Gene 210789 MouseEntrez Gene 306117 RatEntrez Gene 9882 Human O60343
Synonyms:	AS160; NIDDM5



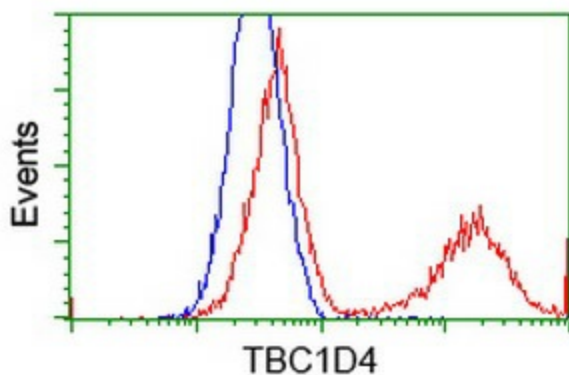
[View online »](#)

Product images:


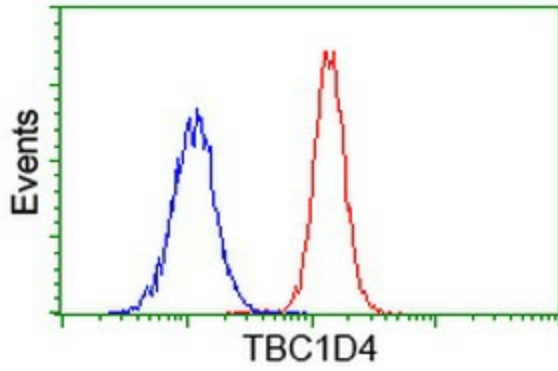
HEK293T cells were transfected with the pCMV6-ENTRY control (Left lane) or pCMV6-ENTRY TBC1D4 ([RC212105], Right lane) cDNA for 48 hrs and lysed. Equivalent amounts of cell lysates (5 ug per lane) were separated by SDS-PAGE and immunoblotted with anti-TBC1D4. Positive lysates [LY415036] (100ug) and [LC415036] (20ug) can be purchased separately from OriGene.



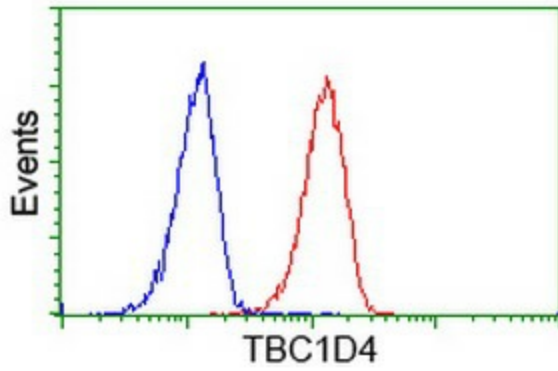
Anti-TBC1D4 mouse monoclonal antibody ([TA502707]) immunofluorescent staining of COS7 cells transiently transfected by pCMV6-ENTRY TBC1D4 ([RC212105]).



HEK293T cells transfected with either [RC212105] overexpress plasmid (Red) or empty vector control plasmid (Blue) were immunostained by anti-TBC1D4 antibody ([TA502707]), and then analyzed by flow cytometry.



Flow cytometric Analysis of Jurkat cells, using anti-TBC1D4 antibody ([TA502707]), (Red), compared to a nonspecific negative control antibody (TA50011), (Blue).



Flow cytometric Analysis of HeLa cells, using anti-TBC1D4 antibody ([TA502707]), (Red), compared to a nonspecific negative control antibody (TA50011), (Blue).