

Product datasheet for **CF502704**

PDHA1 Mouse Monoclonal Antibody [Clone ID: OTI2B10]

Product data:

Product Type:	Primary Antibodies
Clone Name:	OTI2B10
Applications:	FC, IF, WB
Recommended Dilution:	WB 1:2000, IF 1:100, FLOW 1:100
Reactivity:	Human, Mouse, Rat
Host:	Mouse
Isotype:	IgG2b
Clonality:	Monoclonal
Immunogen:	Full length human recombinant protein of human PDHA1 (NP_000275) produced in HEK293T cell.
Formulation:	Lyophilized powder (original buffer 1X PBS, pH 7.3, 8% trehalose)
Reconstitution Method:	For reconstitution, we recommend adding 100uL distilled water to a final antibody concentration of about 1 mg/mL. To use this carrier-free antibody for conjugation experiment, we strongly recommend performing another round of desalting process. (OriGene recommends Zeba Spin Desalting Columns, 7KMWCO from Thermo Scientific)
Purification:	Purified from mouse ascites fluids or tissue culture supernatant by affinity chromatography (protein A/G)
Conjugation:	Unconjugated
Storage:	Store at -20°C as received.
Stability:	Stable for 12 months from date of receipt.
Predicted Protein Size:	40.2 kDa
Gene Name:	pyruvate dehydrogenase E1 subunit alpha 1
Database Link:	NP_000275 Entrez Gene 18597 Mouse Entrez Gene 29554 Rat Entrez Gene 5160 Human P08559



[View online »](#)

Background:

The pyruvate dehydrogenase (PDH) complex is a nuclear-encoded mitochondrial multienzyme complex that catalyzes the overall conversion of pyruvate to acetyl-CoA and CO₂, and provides the primary link between glycolysis and the tricarboxylic acid (TCA) cycle. The PDH complex is composed of multiple copies of three enzymatic components: pyruvate dehydrogenase (E1), dihydrolipoamide acetyltransferase (E2) and lipoamide dehydrogenase (E3). The E1 enzyme is a heterotetramer of two alpha and two beta subunits. This gene encodes the E1 alpha 1 subunit containing the E1 active site, and plays a key role in the function of the PDH complex. Mutations in this gene are associated with pyruvate dehydrogenase E1-alpha deficiency and X-linked Leigh syndrome. Alternatively spliced transcript variants encoding different isoforms have been found for this gene.

Synonyms:

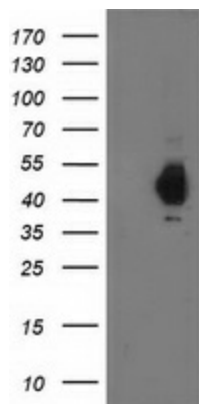
PDHA; PDHAD; PDHCE1A; PHE1A

Protein Families:

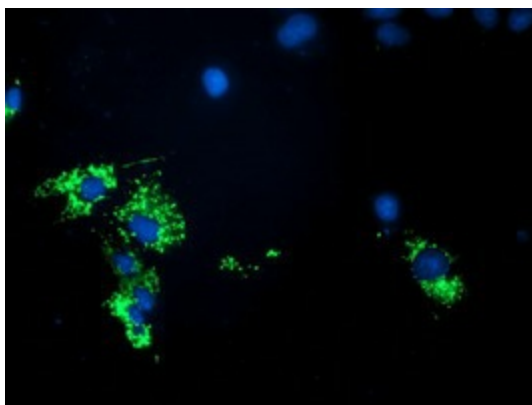
Druggable Genome

Protein Pathways:

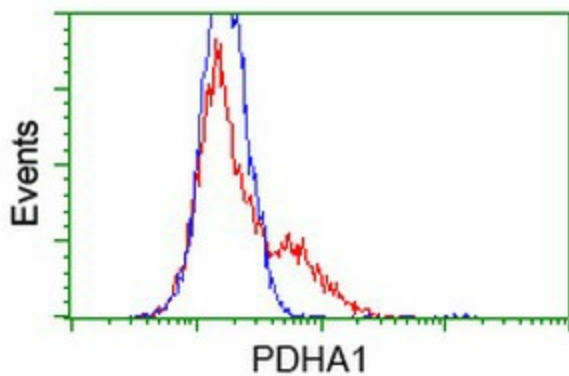
Butanoate metabolism, Citrate cycle (TCA cycle), Glycolysis / Gluconeogenesis, Metabolic pathways, Pyruvate metabolism, Valine, leucine and isoleucine biosynthesis

Product images:


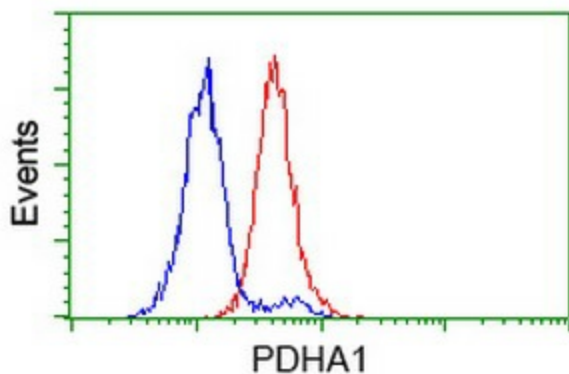
HEK293T cells were transfected with the pCMV6-ENTRY control (Left lane) or pCMV6-ENTRY PDHA1 ([RC201831], Right lane) cDNA for 48 hrs and lysed. Equivalent amounts of cell lysates (5 ug per lane) were separated by SDS-PAGE and immunoblotted with anti-PDHA1. Positive lysates [LY400110] (100ug) and [LC400110] (20ug) can be purchased separately from OriGene.



Anti-PDHA1 mouse monoclonal antibody ([TA502704]) immunofluorescent staining of COS7 cells transiently transfected by pCMV6-ENTRY PDHA1 ([RC201831]).



HEK293T cells transfected with either [RC201831] overexpress plasmid (Red) or empty vector control plasmid (Blue) were immunostained by anti-PDHA1 antibody ([TA502704]), and then analyzed by flow cytometry.



Flow cytometric Analysis of HeLa cells, using anti-PDHA1 antibody ([TA502704]), (Red), compared to a nonspecific negative control antibody (TA50011), (Blue).