

Product datasheet for **CF502695**

TBC1D4 Mouse Monoclonal Antibody [Clone ID: OTI5E6]

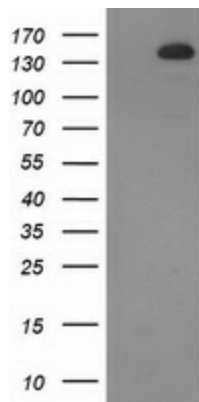
Product data:

| | |
|--------------------------------|--|
| Product Type: | Primary Antibodies |
| Clone Name: | OTI5E6 |
| Applications: | FC, IF, WB |
| Recommended Dilution: | WB 1:2000, IF 1:100, FLOW 1:100 |
| Reactivity: | Human, Mouse, Rat |
| Host: | Mouse |
| Isotype: | IgG2b |
| Clonality: | Monoclonal |
| Immunogen: | Full length human recombinant protein of human TBC1D4 (NP_0055647) produced in HEK293T cell. |
| Formulation: | Lyophilized powder (original buffer 1X PBS, pH 7.3, 8% trehalose) |
| Reconstitution Method: | For reconstitution, we recommend adding 100uL distilled water to a final antibody concentration of about 1 mg/mL. To use this carrier-free antibody for conjugation experiment, we strongly recommend performing another round of desalting process. (OriGene recommends Zeba Spin Desalting Columns, 7KMWCO from Thermo Scientific) |
| Purification: | Purified from mouse ascites fluids or tissue culture supernatant by affinity chromatography (protein A/G) |
| Conjugation: | Unconjugated |
| Storage: | Store at -20°C as received. |
| Stability: | Stable for 12 months from date of receipt. |
| Predicted Protein Size: | 146.4 kDa |
| Gene Name: | TBC1 domain family member 4 |
| Database Link: | NP_055647 Entrez Gene 210789 Mouse Entrez Gene 306117 Rat Entrez Gene 9882 Human O60343 |
| Synonyms: | AS160; NIDDM5 |

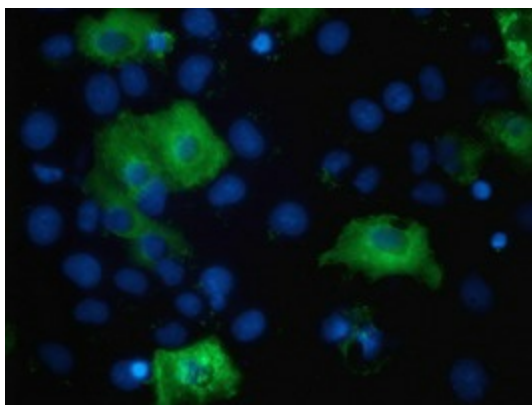


[View online »](#)

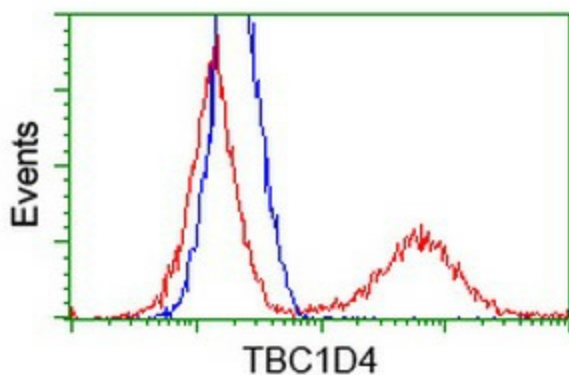
Product images:



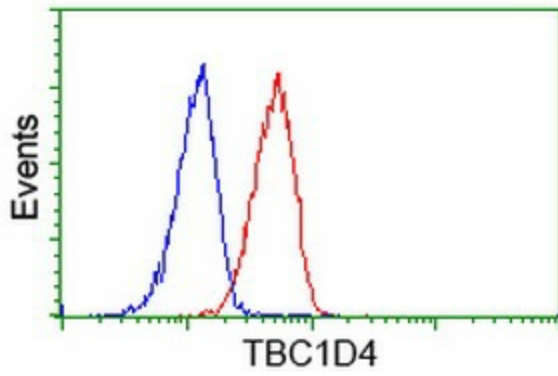
HEK293T cells were transfected with the pCMV6-ENTRY control (Cat# [PS100001], Left lane) or pCMV6-ENTRY TBC1D4 (Cat# [RC212105], Right lane) cDNA for 48 hrs and lysed. Equivalent amounts of cell lysates (5 ug per lane) were separated by SDS-PAGE and immunoblotted with anti-TBC1D4 (Cat# [TA502695]). Positive lysates [LY415036] (100ug) and [LC415036] (20ug) can be purchased separately from OriGene.



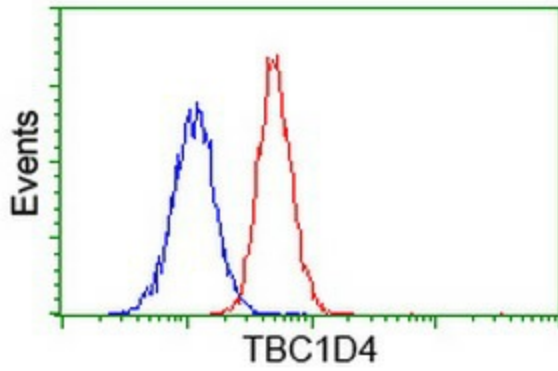
Anti-TBC1D4 mouse monoclonal antibody ([TA502695]) immunofluorescent staining of COS7 cells transiently transfected by pCMV6-ENTRY TBC1D4 ([RC212105]).



HEK293T cells transfected with either [RC212105] overexpress plasmid (Red) or empty vector control plasmid (Blue) were immunostained by anti-TBC1D4 antibody ([TA502695]), and then analyzed by flow cytometry.



Flow cytometric Analysis of HeLa cells, using anti-TBC1D4 antibody ([TA502695]), (Red), compared to a nonspecific negative control antibody (TA50011), (Blue).



Flow cytometric Analysis of Jurkat cells, using anti-TBC1D4 antibody ([TA502695]), (Red), compared to a nonspecific negative control antibody (TA50011), (Blue).