

Product datasheet for **CF502664**

SULT1C2 Mouse Monoclonal Antibody [Clone ID: OTI6F2]

Product data:

Product Type:	Primary Antibodies
Clone Name:	OTI6F2
Applications:	FC, WB
Recommended Dilution:	WB 1:500~2000, FLOW 1:100
Reactivity:	Human
Host:	Mouse
Isotype:	IgG1
Clonality:	Monoclonal
Immunogen:	Full length human recombinant protein of human SULT1C2 (NP_001047) produced in HEK293T cell.
Formulation:	Lyophilized powder (original buffer 1X PBS, pH 7.3, 8% trehalose)
Reconstitution Method:	For reconstitution, we recommend adding 100uL distilled water to a final antibody concentration of about 1 mg/mL. To use this carrier-free antibody for conjugation experiment, we strongly recommend performing another round of desalting process. (OriGene recommends Zeba Spin Desalting Columns, 7KMWCO from Thermo Scientific)
Purification:	Purified from mouse ascites fluids or tissue culture supernatant by affinity chromatography (protein A/G)
Conjugation:	Unconjugated
Storage:	Store at -20°C as received.
Stability:	Stable for 12 months from date of receipt.
Predicted Protein Size:	34.7 kDa
Gene Name:	sulfotransferase family 1C member 2
Database Link:	NP_001047 Entrez Gene 6819 Human O00338

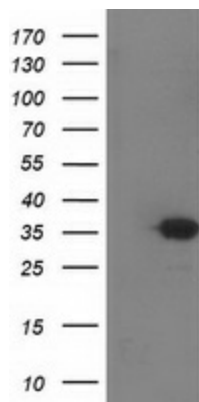
[View online »](#)

Background:

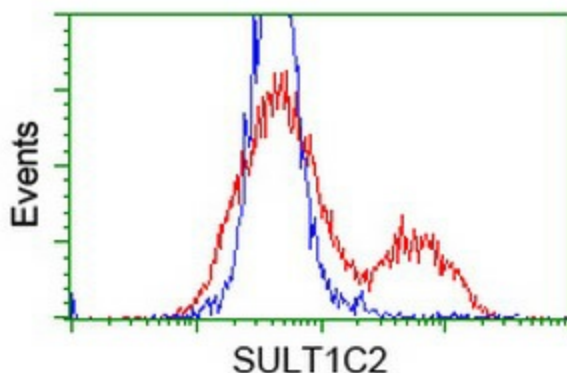
Sulfotransferase enzymes catalyze the sulfate conjugation of many hormones, neurotransmitters, drugs, and xenobiotic compounds. These cytosolic enzymes are different in their tissue distributions and substrate specificities. The gene structure (number and length of exons) is similar among family members. This gene encodes a protein that belongs to the SULT1 subfamily, responsible for transferring a sulfo moiety from PAPS to phenol-containing compounds. Two alternatively spliced transcript variants encoding different isoforms have been described for this gene. [provided by RefSeq]

Synonyms:

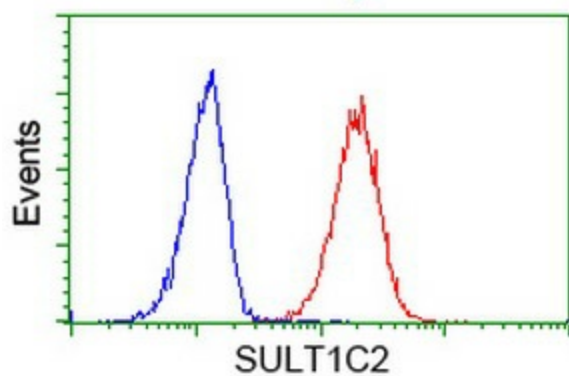
humSULTC2; ST1C1; ST1C2; SULT1C1

Product images:


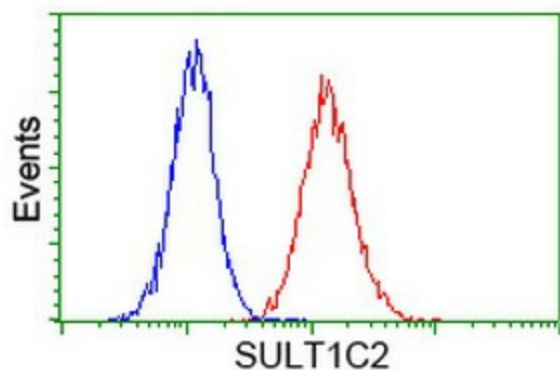
HEK293T cells were transfected with the pCMV6-ENTRY control (Left lane) or pCMV6-ENTRY SULT1C2 [RC202775], Right lane) cDNA for 48 hrs and lysed. Equivalent amounts of cell lysates (5 ug per lane) were separated by SDS-PAGE and immunoblotted with anti-SULT1C2. Positive lysates [LY420736] (100ug) and [LC420736] (20ug) can be purchased separately from OriGene.



HEK293T cells transfected with either [RC202775] overexpress plasmid (Red) or empty vector control plasmid (Blue) were immunostained by anti-SULT1C2 antibody ([TA502664]), and then analyzed by flow cytometry.



Flow cytometric Analysis of HeLa cells, using anti-SULT1C2 antibody ([TA502664]), (Red), compared to a nonspecific negative control antibody (TA50011), (Blue).



Flow cytometric Analysis of Jurkat cells, using anti-SULT1C2 antibody ([TA502664]), (Red), compared to a nonspecific negative control antibody (TA50011), (Blue).