

Product datasheet for **CF502656**

NDUFA7 Mouse Monoclonal Antibody [Clone ID: OTI3B2]

Product data:

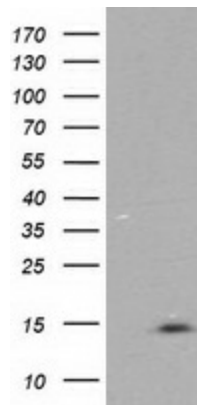
Product Type:	Primary Antibodies
Clone Name:	OTI3B2
Applications:	FC, WB
Recommended Dilution:	WB 1:2000, FLOW 1:100
Reactivity:	Human, Mouse, Rat
Host:	Mouse
Isotype:	IgG1
Clonality:	Monoclonal
Immunogen:	Full length human recombinant protein of human NDUFA7 (NP_004992) produced in HEK293T cell.
Formulation:	Lyophilized powder (original buffer 1X PBS, pH 7.3, 8% trehalose)
Reconstitution Method:	For reconstitution, we recommend adding 100uL distilled water to a final antibody concentration of about 1 mg/mL. To use this carrier-free antibody for conjugation experiment, we strongly recommend performing another round of desalting process. (OriGene recommends Zeba Spin Desalting Columns, 7KMWCO from Thermo Scientific)
Purification:	Purified from mouse ascites fluids or tissue culture supernatant by affinity chromatography (protein A/G)
Conjugation:	Unconjugated
Storage:	Store at -20°C as received.
Stability:	Stable for 12 months from date of receipt.
Predicted Protein Size:	12.4 kDa
Gene Name:	NADH:ubiquinone oxidoreductase subunit A7
Database Link:	NP_004992 Entrez Gene 66416 Mouse Entrez Gene 299643 Rat Entrez Gene 4701 Human O95182
Synonyms:	B14.5a; Cl-B14.5a



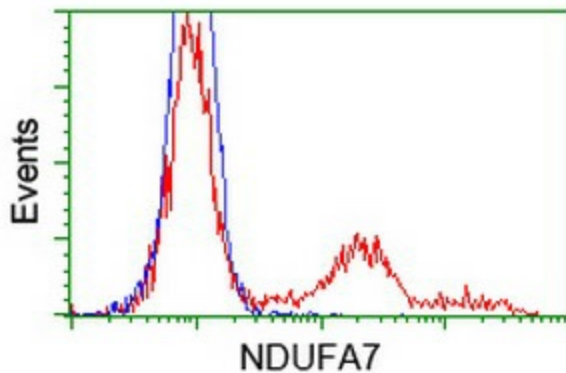
[View online »](#)

Protein Pathways: Alzheimer's disease, Huntington's disease, Metabolic pathways, Oxidative phosphorylation, Parkinson's disease

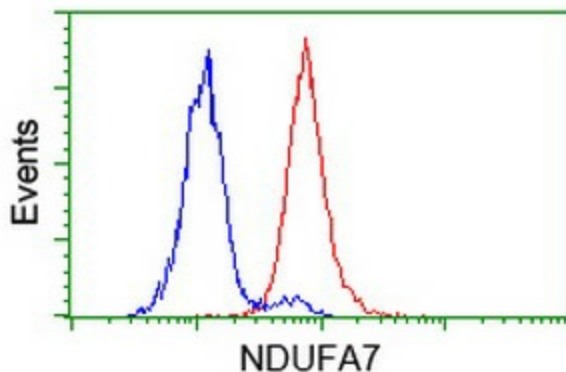
Product images:



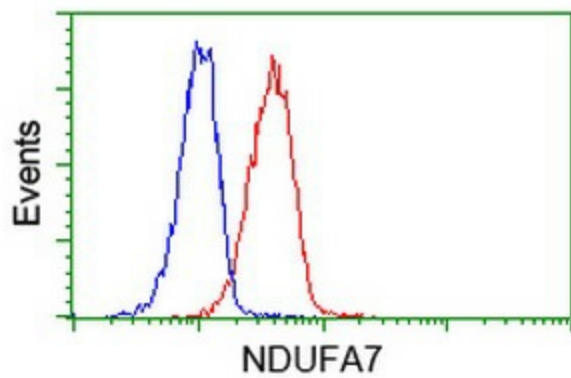
HEK293T cells were transfected with the pCMV6-ENTRY control (Left lane) or pCMV6-ENTRY NDUFA7 ([RC200534], Right lane) cDNA for 48 hrs and lysed. Equivalent amounts of cell lysates (5 ug per lane) were separated by SDS-PAGE and immunoblotted with anti-NDUFA7. Positive lysates [LY417603] (100ug) and [LC417603] (20ug) can be purchased separately from OriGene.



HEK293T cells transfected with either [RC200534] overexpress plasmid (Red) or empty vector control plasmid (Blue) were immunostained by anti-NDUFA7 antibody ([TA502656]), and then analyzed by flow cytometry.



Flow cytometric Analysis of HeLa cells, using anti-NDUFA7 antibody ([TA502656]), (Red), compared to a nonspecific negative control antibody (TA50011), (Blue).



Flow cytometric Analysis of Jurkat cells, using anti-NDUFA7 antibody ([TA502656]), (Red), compared to a nonspecific negative control antibody (TA50011), (Blue).