

Product datasheet for **CF502640**

NDUFA7 Mouse Monoclonal Antibody [Clone ID: OTI2F3]

Product data:

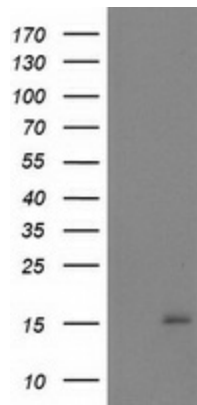
| | |
|-------------------------|--|
| Product Type: | Primary Antibodies |
| Clone Name: | OTI2F3 |
| Applications: | FC, WB |
| Recommended Dilution: | WB 1:2000, FLOW 1:100 |
| Reactivity: | Human, Mouse, Rat |
| Host: | Mouse |
| Isotype: | IgG1 |
| Clonality: | Monoclonal |
| Immunogen: | Full length human recombinant protein of human NDUFA7 (NP_004992) produced in HEK293T cell. |
| Formulation: | Lyophilized powder (original buffer 1X PBS, pH 7.3, 8% trehalose) |
| Reconstitution Method: | For reconstitution, we recommend adding 100uL distilled water to a final antibody concentration of about 1 mg/mL. To use this carrier-free antibody for conjugation experiment, we strongly recommend performing another round of desalting process. (OriGene recommends Zeba Spin Desalting Columns, 7KMWCO from Thermo Scientific) |
| Purification: | Purified from mouse ascites fluids or tissue culture supernatant by affinity chromatography (protein A/G) |
| Conjugation: | Unconjugated |
| Storage: | Store at -20°C as received. |
| Stability: | Stable for 12 months from date of receipt. |
| Predicted Protein Size: | 12.4 kDa |
| Gene Name: | NADH:ubiquinone oxidoreductase subunit A7 |
| Database Link: | NP_004992 Entrez Gene 66416 Mouse Entrez Gene 299643 Rat Entrez Gene 4701 Human O95182 |
| Synonyms: | B14.5a; Cl-B14.5a |



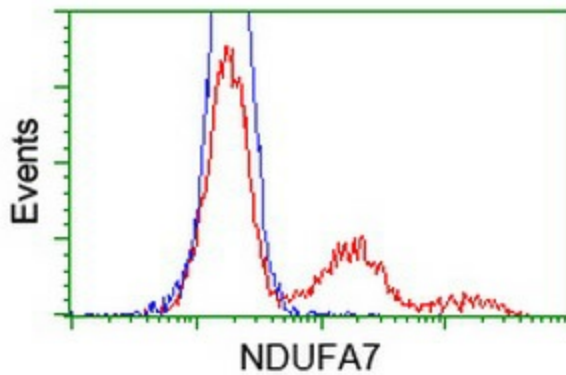
[View online »](#)

Protein Pathways: Alzheimer's disease, Huntington's disease, Metabolic pathways, Oxidative phosphorylation, Parkinson's disease

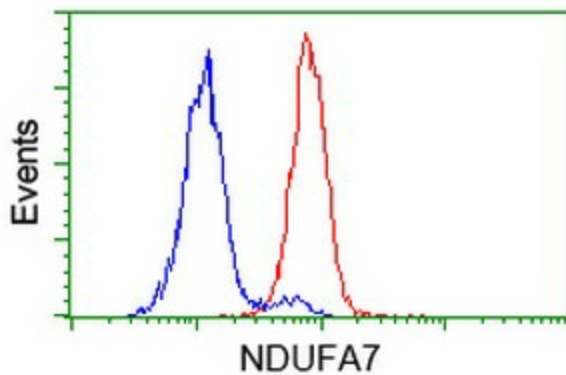
Product images:



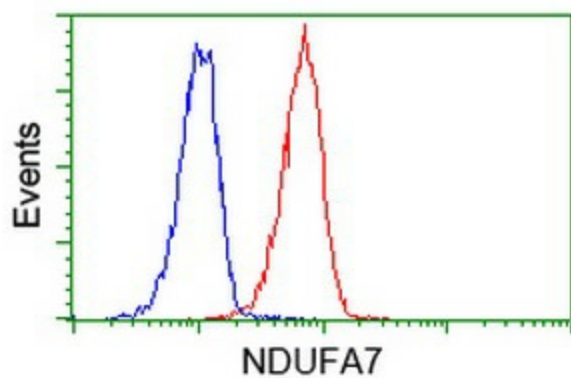
HEK293T cells were transfected with the pCMV6-ENTRY control (Left lane) or pCMV6-ENTRY NDUFA7 ([RC200534], Right lane) cDNA for 48 hrs and lysed. Equivalent amounts of cell lysates (5 ug per lane) were separated by SDS-PAGE and immunoblotted with anti-NDUFA7. Positive lysates [LY417603] (100ug) and [LC417603] (20ug) can be purchased separately from OriGene.



HEK293T cells transfected with either [RC200534] overexpress plasmid (Red) or empty vector control plasmid (Blue) were immunostained by anti-NDUFA7 antibody ([TA502640]), and then analyzed by flow cytometry.



Flow cytometric Analysis of HeLa cells, using anti-NDUFA7 antibody ([TA502640]), (Red), compared to a nonspecific negative control antibody (TA50011), (Blue).



Flow cytometric Analysis of Jurkat cells, using anti-NDUFA7 antibody ([TA502640]), (Red), compared to a nonspecific negative control antibody (TA50011), (Blue).