

## Product datasheet for **CF502612**

### PON1 Mouse Monoclonal Antibody [Clone ID: OTI2A9]

#### Product data:

Product Type:	Primary Antibodies
Clone Name:	OTI2A9
Applications:	FC, WB
Recommended Dilution:	WB 1:500~2000, FLOW 1:100
Reactivity:	Human, Monkey
Host:	Mouse
Isotype:	IgG1
Clonality:	Monoclonal
Immunogen:	Full length human recombinant protein of human PON1 (NP_000437) produced in HEK293T cell.
Formulation:	Lyophilized powder (original buffer 1X PBS, pH 7.3, 8% trehalose)
Reconstitution Method:	For reconstitution, we recommend adding 100uL distilled water to a final antibody concentration of about 1 mg/mL. To use this carrier-free antibody for conjugation experiment, we strongly recommend performing another round of desalting process. (OriGene recommends Zeba Spin Desalting Columns, 7KMWCO from Thermo Scientific)
Purification:	Purified from mouse ascites fluids or tissue culture supernatant by affinity chromatography (protein A/G)
Conjugation:	Unconjugated
Storage:	Store at -20°C as received.
Stability:	Stable for 12 months from date of receipt.
Predicted Protein Size:	39.6 kDa
Gene Name:	paraoxonase 1
Database Link:	<a href="#">NP_000437</a> <a href="#">Entrez Gene 699355 Monkey</a> <a href="#">Entrez Gene 5444 Human</a> <a href="#">P27169</a>



[View online »](#)

**Background:**

The enzyme encoded by this gene is an arylesterase that mainly hydrolyzes paroxon to produce p-nitrophenol. Paroxon is an organophosphorus anticholinesterase compound that is produced in vivo by oxidation of the insecticide parathion. Polymorphisms in this gene are a risk factor in coronary artery disease. The gene is found in a cluster of three related paraoxonase genes at 7q21.3. [provided by RefSeq]

**Synonyms:**

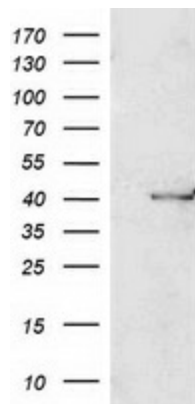
ESA; MVCD5; PON

**Protein Families:**

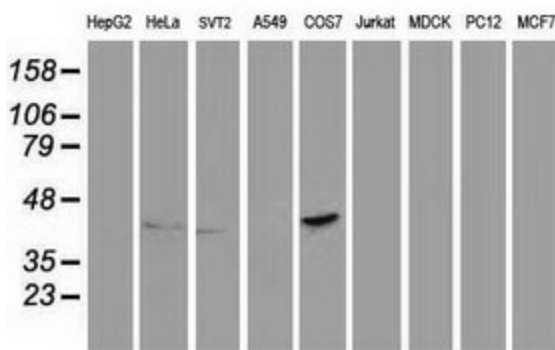
Druggable Genome, Secreted Protein

**Protein Pathways:**

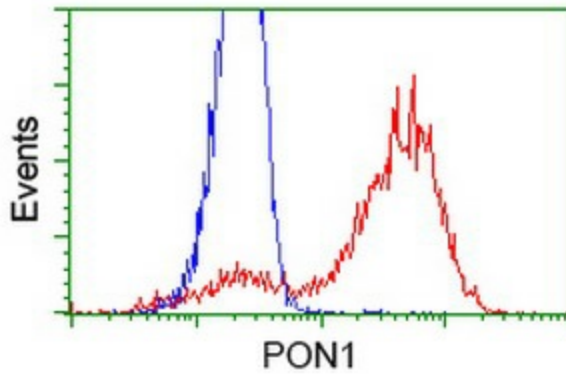
Metabolic pathways

**Product images:**


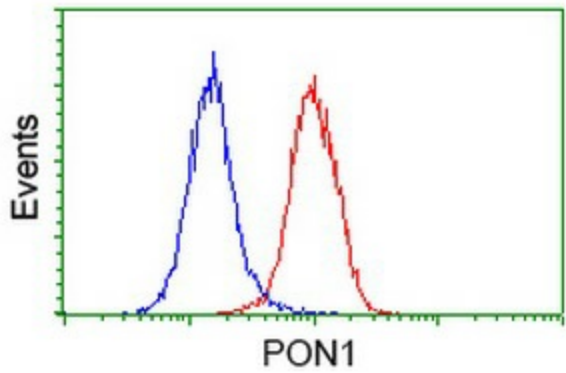
HEK293T cells were transfected with the pCMV6-ENTRY control (Left lane) or pCMV6-ENTRY PON1 ([RC210356], Right lane) cDNA for 48 hrs and lysed. Equivalent amounts of cell lysates (5 ug per lane) were separated by SDS-PAGE and immunoblotted with anti-PON1. Positive lysates [LY400156] (100ug) and [LC400156] (20ug) can be purchased separately from OriGene.



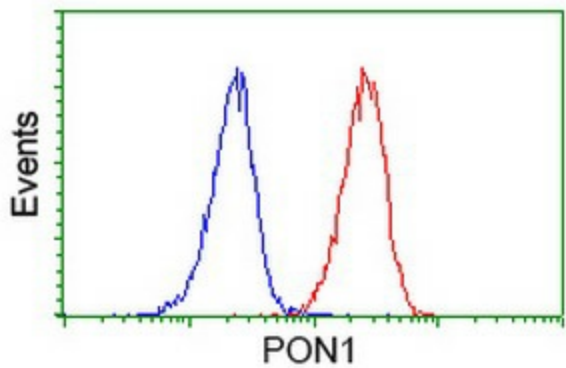
Western blot analysis of extracts (35ug) from 9 different cell lines by using anti-PON1 monoclonal antibody.



HEK293T cells transfected with either [RC210356] overexpress plasmid (Red) or empty vector control plasmid (Blue) were immunostained by anti-PON1 antibody ([TA502612]), and then analyzed by flow cytometry.



Flow cytometric Analysis of HeLa cells, using anti-PON1 antibody ([TA502612]), (Red), compared to a nonspecific negative control antibody (TA50011), (Blue).



Flow cytometric Analysis of Jurkat cells, using anti-PON1 antibody ([TA502612]), (Red), compared to a nonspecific negative control antibody (TA50011), (Blue).