

## Product datasheet for **CF502580**

### LACTB2 Mouse Monoclonal Antibody [Clone ID: OTI3A5]

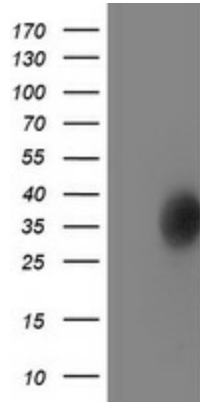
#### Product data:

Product Type:	Primary Antibodies
Clone Name:	OTI3A5
Applications:	FC, IHC, WB
Recommended Dilution:	WB 1:2000, IHC 1:150, FLOW 1:100
Reactivity:	Human
Host:	Mouse
Isotype:	IgG1
Clonality:	Monoclonal
Immunogen:	Full length human recombinant protein of human LACTB2 (NP_057111) produced in E.coli
Formulation:	Lyophilized powder (original buffer 1X PBS, pH 7.3, 8% trehalose)
Reconstitution Method:	For reconstitution, we recommend adding 100uL distilled water to a final antibody concentration of about 1 mg/mL. To use this carrier-free antibody for conjugation experiment, we strongly recommend performing another round of desalting process. (OriGene recommends Zeba Spin Desalting Columns, 7KMWCO from Thermo Scientific)
Purification:	Purified from mouse ascites fluids or tissue culture supernatant by affinity chromatography (protein A/G)
Conjugation:	Unconjugated
Storage:	Store at -20°C as received.
Stability:	Stable for 12 months from date of receipt.
Predicted Protein Size:	32.6 kDa
Gene Name:	lactamase beta 2
Database Link:	<a href="#">NP_057111</a> <a href="#">Entrez Gene 51110 Human</a> <a href="#">Q53H82</a>
Synonyms:	CGI-83

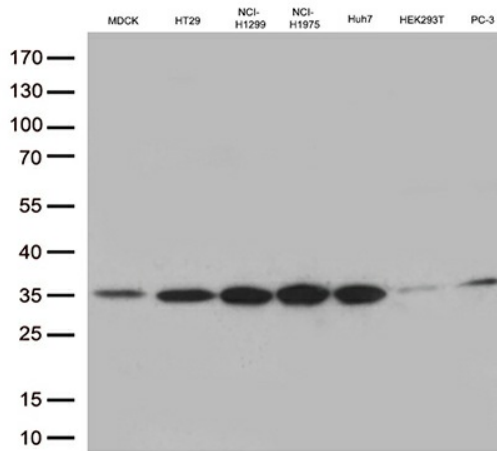


[View online »](#)

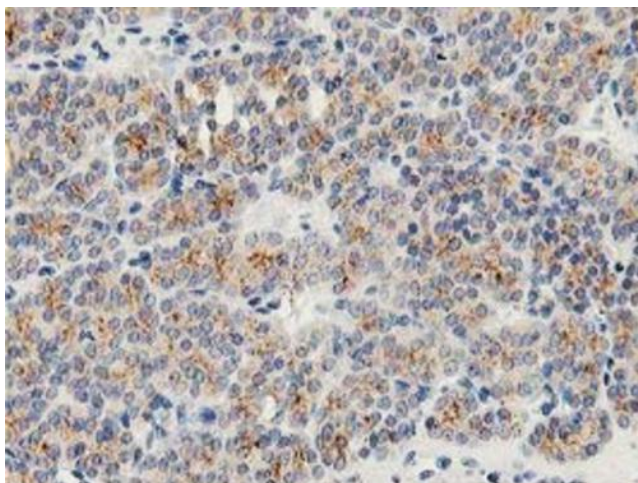
**Product images:**



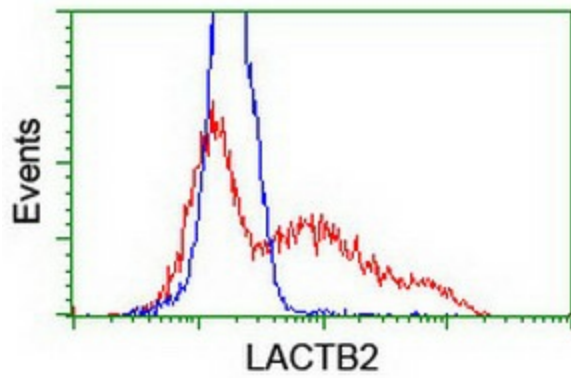
HEK293T cells were transfected with the pCMV6-ENTRY control (Left lane) or pCMV6-ENTRY LACTB2 ([RC201465], Right lane) cDNA for 48 hrs and lysed. Equivalent amounts of cell lysates (5 ug per lane) were separated by SDS-PAGE and immunoblotted with anti-LACTB2. Positive lysates [LY414237] (100ug) and [LC414237] (20ug) can be purchased separately from OriGene.



Western blot analysis of extracts (35ug) from 7 cell line lysates by using anti-LACTB2 monoclonal antibody (1:500).



Immunohistochemical staining of paraffin-embedded Carcinoma of Human thyroid tissue using anti-LACTB2 mouse monoclonal antibody. (Heat-induced epitope retrieval by 10mM citric buffer, pH6.0, 100°C for 10min, [TA502580])



HEK293T cells transfected with either [RC201465] overexpress plasmid (Red) or empty vector control plasmid (Blue) were immunostained by anti-LACTB2 antibody ([TA502580]), and then analyzed by flow cytometry.