

## Product datasheet for **CF502536**

### BCAR1 Mouse Monoclonal Antibody [Clone ID: OTI3A11]

#### Product data:

Product Type:	Primary Antibodies
Clone Name:	OTI3A11
Applications:	FC, IF, IHC, WB
Recommended Dilution:	WB 1:500~2000, IHC 1:150, IF 1:100, FLOW 1:100
Reactivity:	Human, Dog, Rat, Monkey, Mouse
Host:	Mouse
Isotype:	IgG1
Clonality:	Monoclonal
Immunogen:	Full length human recombinant protein of human BCAR1 (NP_055382) produced in HEK293T cell.
Formulation:	Lyophilized powder (original buffer 1X PBS, pH 7.3, 8% trehalose)
Reconstitution Method:	For reconstitution, we recommend adding 100uL distilled water to a final antibody concentration of about 1 mg/mL. To use this carrier-free antibody for conjugation experiment, we strongly recommend performing another round of desalting process. (OriGene recommends Zeba Spin Desalting Columns, 7KMWCO from Thermo Scientific)
Purification:	Purified from mouse ascites fluids or tissue culture supernatant by affinity chromatography (protein A/G)
Conjugation:	Unconjugated
Storage:	Store at -20°C as received.
Stability:	Stable for 12 months from date of receipt.
Predicted Protein Size:	93.2 kDa
Gene Name:	BCAR1 scaffold protein, Cas family member
Database Link:	<a href="#">NP_055382</a> <a href="#">Entrez Gene 12927 Mouse</a> <a href="#">Entrez Gene 25414 Rat</a> <a href="#">Entrez Gene 479648 Dog</a> <a href="#">Entrez Gene 713965 Monkey</a> <a href="#">Entrez Gene 9564 Human</a> <a href="#">P56945</a>



[View online »](#)

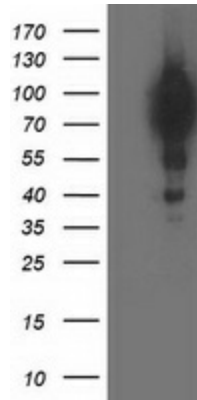
**Background:** BCAR1, or CAS, is an Src (MIM 190090) family kinase substrate involved in various cellular events, including migration, survival, transformation, and invasion (Sawada et al., 2006 [PubMed 17129785]). [supplied by OMIM]

**Synonyms:** CAS; CAS1; CASS1; CRKAS; P130Cas

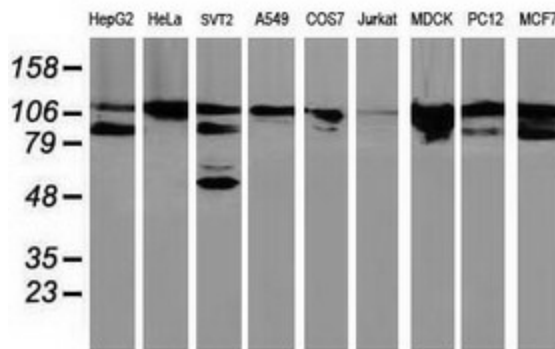
**Protein Families:** Druggable Genome

**Protein Pathways:** Chemokine signaling pathway, Focal adhesion, Leukocyte transendothelial migration, Regulation of actin cytoskeleton

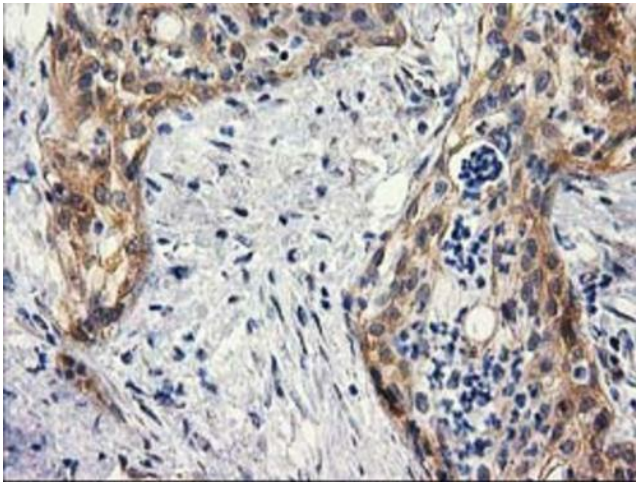
**Product images:**



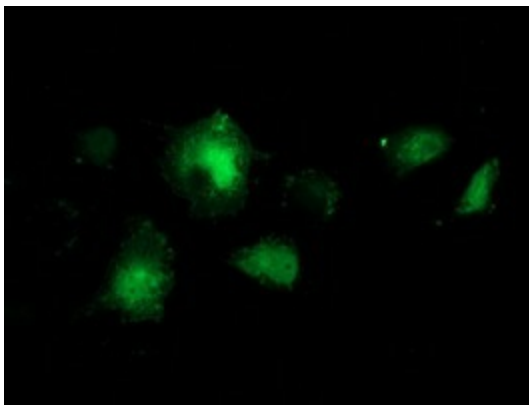
HEK293T cells were transfected with the pCMV6-ENTRY control (Left lane) or pCMV6-ENTRY BCAR1 ([RC209133], Right lane) cDNA for 48 hrs and lysed. Equivalent amounts of cell lysates (5 ug per lane) were separated by SDS-PAGE and immunoblotted with anti-BCAR1. Positive lysates [LY415204] (100ug) and [LC415204] (20ug) can be purchased separately from OriGene.



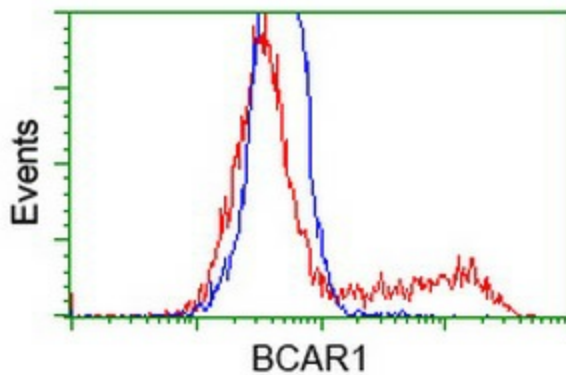
Western blot analysis of extracts (35ug) from 9 different cell lines by using anti-BCAR1 monoclonal antibody.



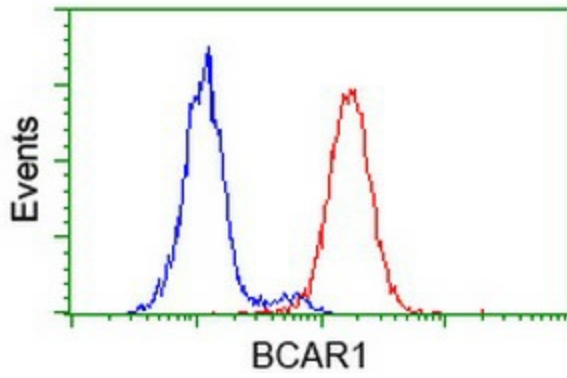
Immunohistochemical staining of paraffin-embedded Carcinoma of Human pancreas tissue using anti-BCAR1 mouse monoclonal antibody. (Heat-induced epitope retrieval by 10mM citric buffer, pH6.0, 100°C for 10min, [TA502536])



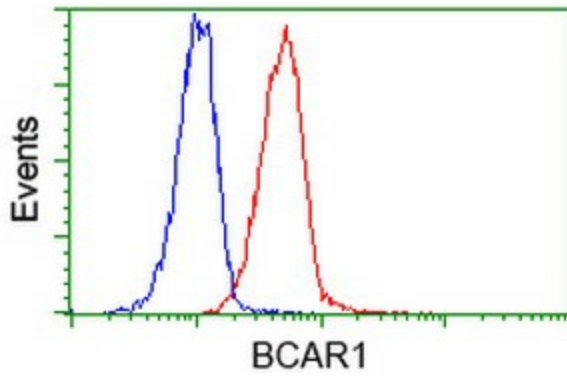
Anti-BCAR1 mouse monoclonal antibody ([TA502536]) immunofluorescent staining of COS7 cells transiently transfected by pCMV6-ENTRY BCAR1 ([RC209133]).



HEK293T cells transfected with either [RC209133] overexpress plasmid (Red) or empty vector control plasmid (Blue) were immunostained by anti-BCAR1 antibody ([TA502536]), and then analyzed by flow cytometry.



Flow cytometric Analysis of HeLa cells, using anti-BCAR1 antibody ([TA502536]), (Red), compared to a nonspecific negative control antibody, (Blue).



Flow cytometric Analysis of Jurkat cells, using anti-BCAR1 antibody ([TA502536]), (Red), compared to a nonspecific negative control antibody, (Blue).