

## Product datasheet for **CF502478**

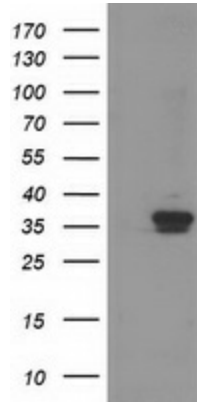
### **RDH14 Mouse Monoclonal Antibody [Clone ID: OTI1A7]**

#### **Product data:**

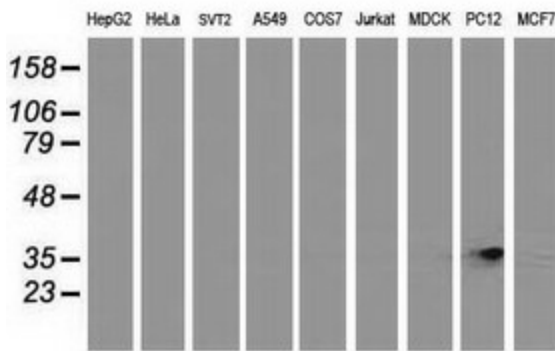
<b>Product Type:</b>	Primary Antibodies
<b>Clone Name:</b>	OTI1A7
<b>Applications:</b>	FC, WB
<b>Recommended Dilution:</b>	WB 1:200~500, FLOW 1:100
<b>Reactivity:</b>	Human, Rat, Mouse
<b>Host:</b>	Mouse
<b>Isotype:</b>	IgG2a
<b>Clonality:</b>	Monoclonal
<b>Immunogen:</b>	Full length human recombinant protein of human RDH14 (NP_065956) produced in HEK293T cell.
<b>Formulation:</b>	Lyophilized powder (original buffer 1X PBS, pH 7.3, 8% trehalose)
<b>Reconstitution Method:</b>	For reconstitution, we recommend adding 100uL distilled water to a final antibody concentration of about 1 mg/mL. To use this carrier-free antibody for conjugation experiment, we strongly recommend performing another round of desalting process. (OriGene recommends Zeba Spin Desalting Columns, 7KMWCO from Thermo Scientific)
<b>Purification:</b>	Purified from mouse ascites fluids or tissue culture supernatant by affinity chromatography (protein A/G)
<b>Conjugation:</b>	Unconjugated
<b>Storage:</b>	Store at -20°C as received.
<b>Stability:</b>	Stable for 12 months from date of receipt.
<b>Predicted Protein Size:</b>	36.7 kDa
<b>Gene Name:</b>	retinol dehydrogenase 14
<b>Database Link:</b>	<a href="#">NP_065956</a> <a href="#">Entrez Gene 500629 Rat</a> <a href="#">Entrez Gene 57665 Human</a> <a href="#">Q9HBH5</a>
<b>Synonyms:</b>	PAN2; SDR7C4
<b>Protein Families:</b>	Druggable Genome, Transmembrane



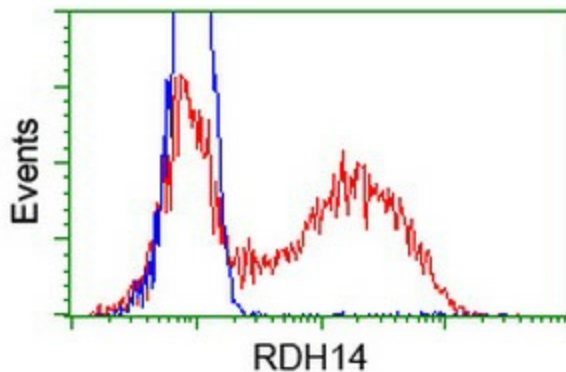
[View online »](#)

**Product images:**


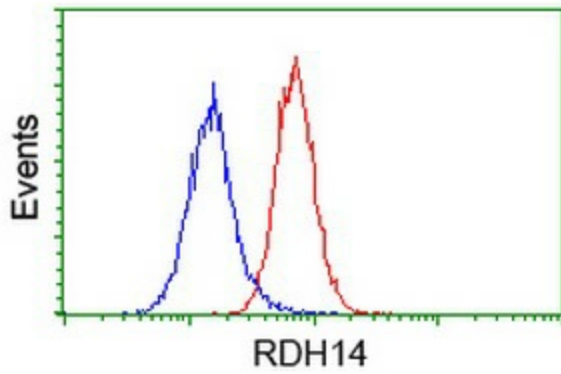
HEK293T cells were transfected with the pCMV6-ENTRY control (Cat# [PS100001], Left lane) or pCMV6-ENTRY RDH14 (Cat# [RC203411], Right lane) cDNA for 48 hrs and lysed. Equivalent amounts of cell lysates (5 ug per lane) were separated by SDS-PAGE and immunoblotted with anti-RDH14 (Cat# [TA502478]). Positive lysates [LY412210] (100ug) and [LC412210] (20ug) can be purchased separately from OriGene.



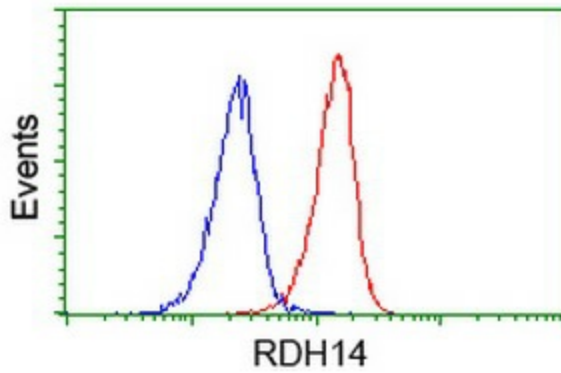
Western blot analysis of extracts (35ug) from 9 different cell lines by using anti-RDH14 monoclonal antibody.



HEK293T cells transfected with either [RC203411] overexpress plasmid (Red) or empty vector control plasmid (Blue) were immunostained by anti-RDH14 antibody ([TA502478]), and then analyzed by flow cytometry.



Flow cytometric Analysis of HeLa cells, using anti-RDH14 antibody ([TA502478]), (Red), compared to a nonspecific negative control antibody (TA50011), (Blue).



Flow cytometric Analysis of Jurkat cells, using anti-RDH14 antibody ([TA502478]), (Red), compared to a nonspecific negative control antibody (TA50011), (Blue).