

## Product datasheet for **CF502450**

### Prostaglandin dehydrogenase 1 (HPGD) Mouse Monoclonal Antibody [Clone ID: OT11C10]

#### Product data:

Product Type:	Primary Antibodies
Clone Name:	OT11C10
Applications:	FC, IHC, WB
Recommended Dilution:	WB 1:2000, IHC 1:150, FLOW 1:100
Reactivity:	Human
Host:	Mouse
Isotype:	IgG1
Clonality:	Monoclonal
Immunogen:	Full length human recombinant protein of human HPGD (NP_000851) produced in HEK293T cell.
Formulation:	Lyophilized powder (original buffer 1X PBS, pH 7.3, 8% trehalose)
Reconstitution Method:	For reconstitution, we recommend adding 100uL distilled water to a final antibody concentration of about 1 mg/mL. To use this carrier-free antibody for conjugation experiment, we strongly recommend performing another round of desalting process. (OriGene recommends Zeba Spin Desalting Columns, 7KMWCO from Thermo Scientific)
Purification:	Purified from mouse ascites fluids or tissue culture supernatant by affinity chromatography (protein A/G)
Conjugation:	Unconjugated
Storage:	Store at -20°C as received.
Stability:	Stable for 12 months from date of receipt.
Predicted Protein Size:	28.8 kDa
Gene Name:	15-hydroxyprostaglandin dehydrogenase
Database Link:	<a href="#">NP_000851</a> <a href="#">Entrez Gene 3248 Human</a> <a href="#">P15428</a>



[View online »](#)

**Background:**

This gene encodes a member of the short-chain nonmetalloenzyme alcohol dehydrogenase protein family. The encoded enzyme is responsible for the metabolism of prostaglandins, which function in a variety of physiologic and cellular processes such as inflammation. Mutations in this gene result in primary autosomal recessive hypertrophic osteoarthropathy and cranioosteoarthropathy. Multiple transcript variants encoding different isoforms have been found for this gene. [provided by RefSeq, Mar 2009]

**Synonyms:**

15-PGDH; PGDH; PGDH1; PHOAR1; SDR36C1

**Protein Families:**

Druggable Genome

**Product images:**

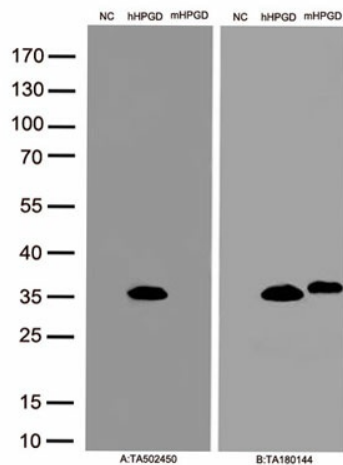
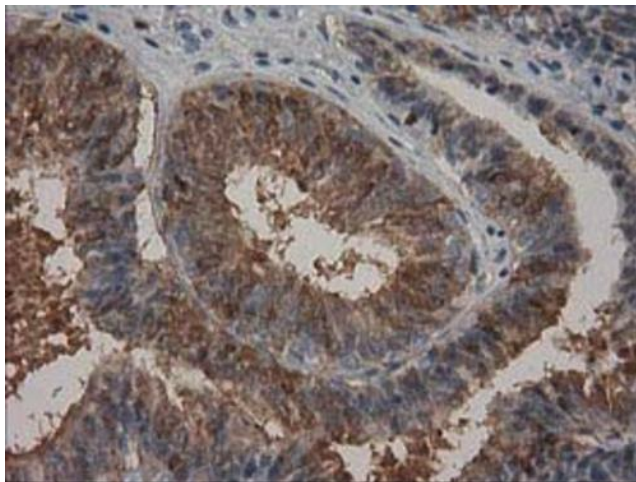
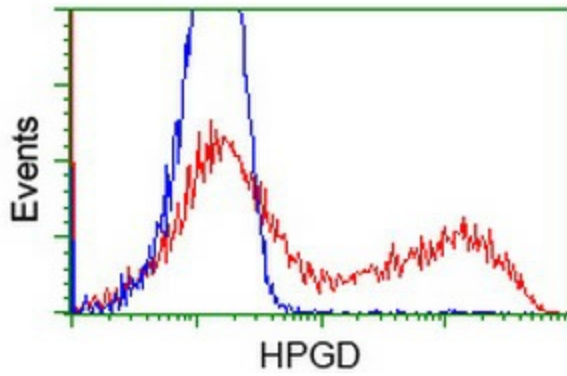


Figure A, Western blot analysis of overexpressed lysates(15ug per lane) from HEK293T cells transfected with empty plasmid ([PS100001], NC), human HPGD plasmid ([RC204160], hHPGD), mouse HPGD plasmid ([MR203530], mHPGD) using anti-HPGD antibody [TA502450](1:500). Figure B, Western blot analysis of the same samples as figure A with anti-DDK antibody ([TA180144], 1:1000)



Immunohistochemical staining of paraffin-embedded Adenocarcinoma of Human endometrium tissue using anti-HPGD mouse monoclonal antibody. Heat-induced epitope retrieval by EDTA solution buffer pH 8.0 at 120°C for 3 min.



HEK293T cells transfected with either [RC204160] overexpress plasmid (Red) or empty vector control plasmid (Blue) were immunostained by anti-HPGD antibody ([TA502450]), and then analyzed by flow cytometry.