

## Product datasheet for **CF502438**

### PKC epsilon (PRKCE) Mouse Monoclonal Antibody [Clone ID: OTI2E9]

#### Product data:

Product Type:	Primary Antibodies
Clone Name:	OTI2E9
Applications:	FC, IF, WB
Recommended Dilution:	WB 1:1000~2000, IF 1:100, FLOW 1:100
Reactivity:	Human, Dog, Monkey, Mouse, Rat
Host:	Mouse
Isotype:	IgG1
Clonality:	Monoclonal
Immunogen:	Full length human recombinant protein of human PRKCE (NP_005391) produced in HEK293T cell.
Formulation:	Lyophilized powder (original buffer 1X PBS, pH 7.3, 8% trehalose)
Reconstitution Method:	For reconstitution, we recommend adding 100uL distilled water to a final antibody concentration of about 1 mg/mL. To use this carrier-free antibody for conjugation experiment, we strongly recommend performing another round of desalting process. (OriGene recommends Zeba Spin Desalting Columns, 7KMWCO from Thermo Scientific)
Purification:	Purified from mouse ascites fluids or tissue culture supernatant by affinity chromatography (protein A/G)
Conjugation:	Unconjugated
Storage:	Store at -20°C as received.
Stability:	Stable for 12 months from date of receipt.
Predicted Protein Size:	83.5 kDa
Gene Name:	protein kinase C epsilon
Database Link:	<a href="#">NP_005391</a> <a href="#">Entrez Gene 18754 Mouse</a> <a href="#">Entrez Gene 29340 Rat</a> <a href="#">Entrez Gene 609934 Dog</a> <a href="#">Entrez Gene 714533 Monkey</a> <a href="#">Entrez Gene 5581 Human</a> <a href="#">Q02156</a>



[View online »](#)

**Background:**

Protein kinase C (PKC) is a family of serine- and threonine-specific protein kinases that can be activated by calcium and the second messenger diacylglycerol. PKC family members phosphorylate a wide variety of protein targets and are known to be involved in diverse cellular signaling pathways. PKC family members also serve as major receptors for phorbol esters, a class of tumor promoters. Each member of the PKC family has a specific expression profile and is believed to play a distinct role in cells. The protein encoded by this gene is one of the PKC family members. This kinase has been shown to be involved in many different cellular functions, such as neuron channel activation, apoptosis, cardioprotection from ischemia, heat shock response, as well as insulin exocytosis. Knockout studies in mice suggest that this kinase is important for lipopolysaccharide (LPS)-mediated signaling in activated macrophages and may also play a role in controlling anxiety-like behavior. [provided by RefSeq]

**Synonyms:**

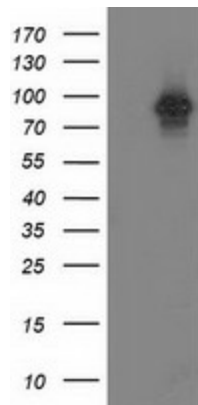
nPKC-epsilon; PKCE

**Protein Families:**

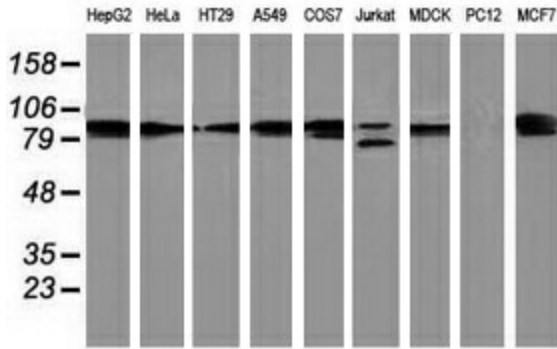
Druggable Genome, Protein Kinase

**Protein Pathways:**

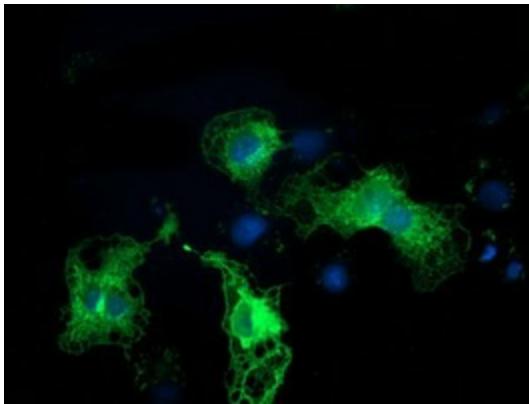
Fc epsilon RI signaling pathway, Fc gamma R-mediated phagocytosis, Tight junction, Type II diabetes mellitus, Vascular smooth muscle contraction

**Product images:**

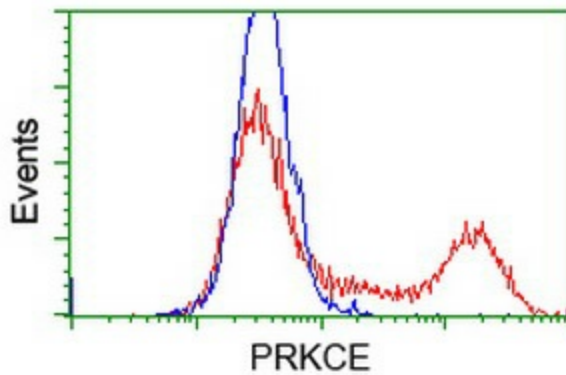
HEK293T cells were transfected with the pCMV6-ENTRY control (Left lane) or pCMV6-ENTRY PRKCE ([RC217702], Right lane) cDNA for 48 hrs and lysed. Equivalent amounts of cell lysates (5 ug per lane) were separated by SDS-PAGE and immunoblotted with anti-PRKCE. Positive lysates [LY401658] (100ug) and [LC401658] (20ug) can be purchased separately from OriGene.



Western blot analysis of extracts (35ug) from 9 different cell lines by using anti-PRKCE monoclonal antibody (HepG2: human; HeLa: human; SVT2: mouse; A549: human; COS7: monkey; Jurkat: human; MDCK: canine; PC12: rat; MCF7: human).



Anti-PRKCE mouse monoclonal antibody ([TA502438]) immunofluorescent staining of COS7 cells transiently transfected by pCMV6-ENTRY PRKCE ([RC217702]).



HEK293T cells transfected with either [RC217702] overexpress plasmid (Red) or empty vector control plasmid (Blue) were immunostained by anti-PRKCE antibody ([TA502438]), and then analyzed by flow cytometry.