

Product datasheet for **CF502431**

EIF4EL3 (EIF4E2) Mouse Monoclonal Antibody [Clone ID: OTI4E7]

Product data:

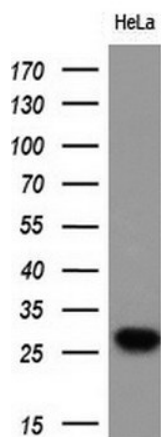
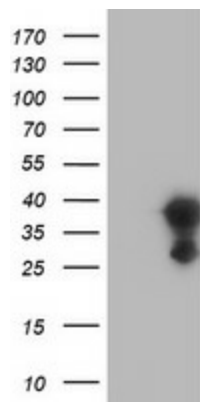
| | |
|-------------------------|--|
| Product Type: | Primary Antibodies |
| Clone Name: | OTI4E7 |
| Applications: | IHC, WB |
| Recommended Dilution: | WB 1:2000, IHC 1:150 |
| Reactivity: | Human, Mouse |
| Host: | Mouse |
| Isotype: | IgG1 |
| Clonality: | Monoclonal |
| Immunogen: | Full length human recombinant protein of human EIF4E2(NP_004837) produced in HEK293T cell. |
| Formulation: | Lyophilized powder (original buffer 1X PBS, pH 7.3, 8% trehalose) |
| Reconstitution Method: | For reconstitution, we recommend adding 100uL distilled water to a final antibody concentration of about 1 mg/mL. To use this carrier-free antibody for conjugation experiment, we strongly recommend performing another round of desalting process. (OriGene recommends Zeba Spin Desalting Columns, 7KMWCO from Thermo Scientific) |
| Purification: | Purified from mouse ascites fluids or tissue culture supernatant by affinity chromatography (protein A/G) |
| Conjugation: | Unconjugated |
| Storage: | Store at -20°C as received. |
| Stability: | Stable for 12 months from date of receipt. |
| Predicted Protein Size: | 28.2 kDa |
| Gene Name: | eukaryotic translation initiation factor 4E family member 2 |
| Database Link: | NP_004837 Entrez Gene 26987 Mouse Entrez Gene 9470 Human O60573 |
| Synonyms: | 4E-LP; 4EHP; EIF4EL3; IF4e |
| Protein Families: | Transcription Factors |

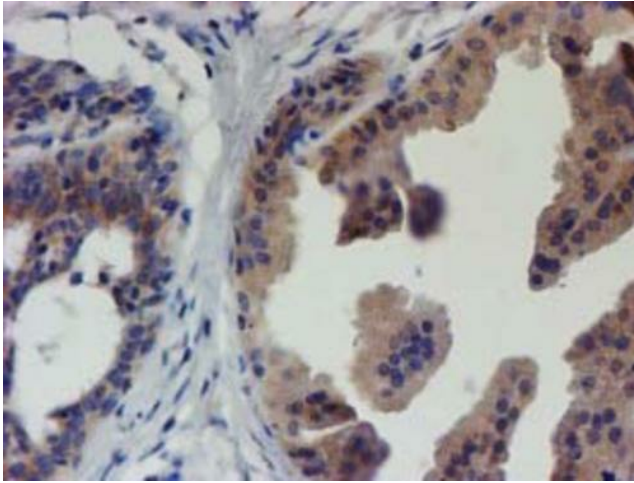


[View online »](#)

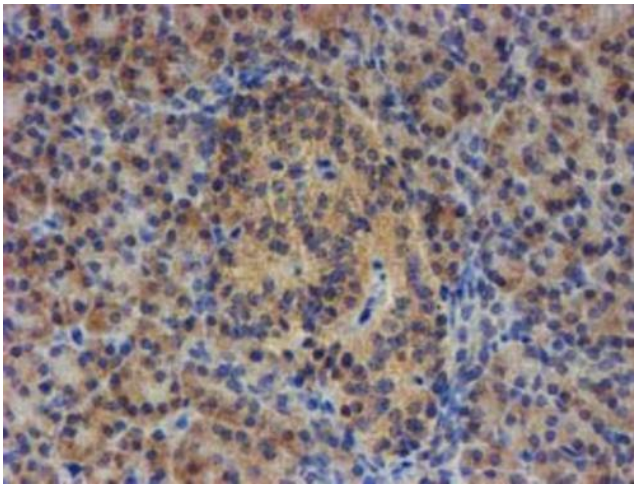
Protein Pathways: Insulin signaling pathway, mTOR signaling pathway

Product images:

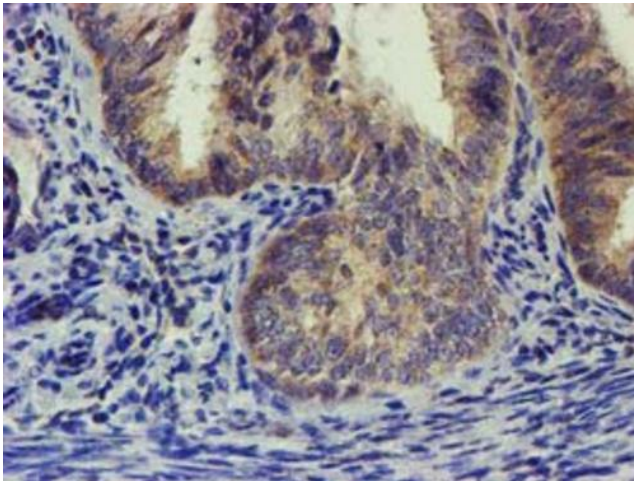




Immunohistochemical staining of paraffin-embedded Human breast tissue within the normal limits using anti-EIF4E2 mouse monoclonal antibody. (Heat-induced epitope retrieval by 10mM citric buffer, pH6.0, 100°C for 10min, [TA502431])



Immunohistochemical staining of paraffin-embedded Human pancreas tissue within the normal limits using anti-EIF4E2 mouse monoclonal antibody. (Heat-induced epitope retrieval by 10mM citric buffer, pH6.0, 100°C for 10min, [TA502431])



Immunohistochemical staining of paraffin-embedded Adenocarcinoma of Human endometrium tissue using anti-EIF4E2 mouse monoclonal antibody. (Heat-induced epitope retrieval by 10mM citric buffer, pH6.0, 100°C for 10min, [TA502431])