

Product datasheet for **CF502411**

VCAM1 Mouse Monoclonal Antibody [Clone ID: OTI2G5]

Product data:

Product Type:	Primary Antibodies
Clone Name:	OTI2G5
Applications:	FC, IF, WB
Recommended Dilution:	WB 1:2000, IF 1:100, FLOW 1:100
Reactivity:	Human
Host:	Mouse
Isotype:	IgG1
Clonality:	Monoclonal
Immunogen:	Full length human recombinant protein of human VCAM1 (NP_001069) produced in HEK293T cell.
Formulation:	Lyophilized powder (original buffer 1X PBS, pH 7.3, 8% trehalose)
Reconstitution Method:	For reconstitution, we recommend adding 100uL distilled water to a final antibody concentration of about 1 mg/mL. To use this carrier-free antibody for conjugation experiment, we strongly recommend performing another round of desalting process. (OriGene recommends Zeba Spin Desalting Columns, 7KMWCO from Thermo Scientific)
Purification:	Purified from mouse ascites fluids or tissue culture supernatant by affinity chromatography (protein A/G)
Conjugation:	Unconjugated
Storage:	Store at -20°C as received.
Stability:	Stable for 12 months from date of receipt.
Predicted Protein Size:	78.7 kDa
Gene Name:	vascular cell adhesion molecule 1
Database Link:	NP_001069 Entrez Gene 7412 Human P19320



[View online »](#)

Background:

This gene is a member of the Ig superfamily and encodes a cell surface sialoglycoprotein expressed by cytokine-activated endothelium. This type I membrane protein mediates leukocyte-endothelial cell adhesion and signal transduction, and may play a role in the development of atherosclerosis and rheumatoid arthritis. Two alternatively spliced transcripts encoding different isoforms have been described for this gene. [provided by RefSeq]

Synonyms:

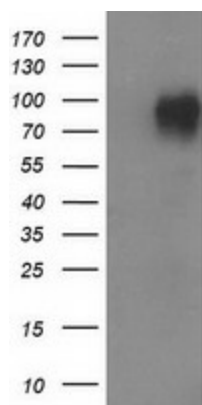
CD106; INCAM-100

Protein Families:

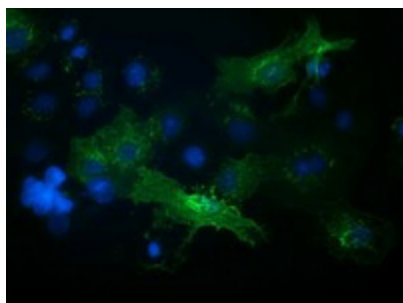
Druggable Genome, ES Cell Differentiation/IPS, Transmembrane

Protein Pathways:

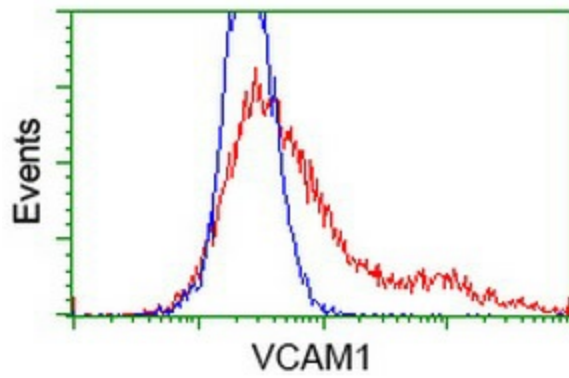
Cell adhesion molecules (CAMs), Leukocyte transendothelial migration

Product images:

HEK293T cells were transfected with the pCMV6-ENTRY control (Left lane) or pCMV6-ENTRY VCAM1 ([RC209761], Right lane) cDNA for 48 hrs and lysed. Equivalent amounts of cell lysates (5 ug per lane) were separated by SDS-PAGE and immunoblotted with anti-VCAM1. Positive lysates [LY421491] (100ug) and [LC421491] (20ug) can be purchased separately from OriGene.



Anti-VCAM1 mouse monoclonal antibody ([TA502411]) immunofluorescent staining of COS7 cells transiently transfected by pCMV6-ENTRY VCAM1 ([RC209761]).



HEK293T cells transfected with either [RC209761] overexpress plasmid (Red) or empty vector control plasmid (Blue) were immunostained by anti-VCAM1 antibody ([TA502411]), and then analyzed by flow cytometry.