

Product datasheet for **CF502401**

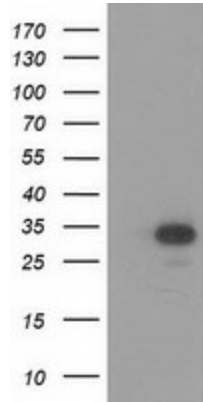
HAGHL Mouse Monoclonal Antibody [Clone ID: OTI4G10]

Product data:

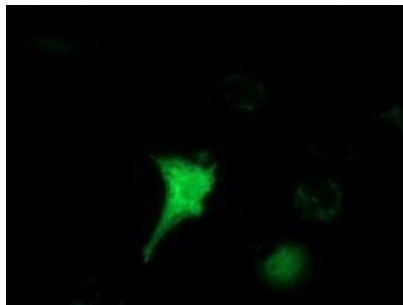
Product Type:	Primary Antibodies
Clone Name:	OTI4G10
Applications:	FC, IF, WB
Recommended Dilution:	WB 1:2000, IF 1:100, FLOW 1:100
Reactivity:	Human
Host:	Mouse
Isotype:	IgG1
Clonality:	Monoclonal
Immunogen:	Full length human recombinant protein of human HAGHL (NP_115680) produced in HEK293T cell.
Formulation:	Lyophilized powder (original buffer 1X PBS, pH 7.3, 8% trehalose)
Reconstitution Method:	For reconstitution, we recommend adding 100uL distilled water to a final antibody concentration of about 1 mg/mL. To use this carrier-free antibody for conjugation experiment, we strongly recommend performing another round of desalting process. (OriGene recommends Zeba Spin Desalting Columns, 7KMWCO from Thermo Scientific)
Purification:	Purified from mouse ascites fluids or tissue culture supernatant by affinity chromatography (protein A/G)
Conjugation:	Unconjugated
Storage:	Store at -20°C as received.
Stability:	Stable for 12 months from date of receipt.
Predicted Protein Size:	31.1 kDa
Gene Name:	hydroxyacylglutathione hydrolase like
Database Link:	NP_115680 Entrez Gene 84264 Human Q6PII5
Synonyms:	MGC2605
Protein Pathways:	Pyruvate metabolism



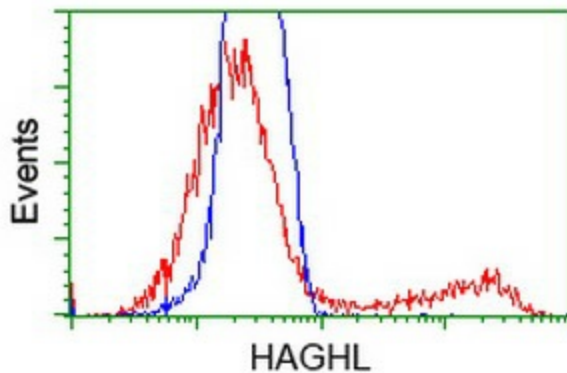
[View online »](#)

Product images:


HEK293T cells were transfected with the pCMV6-ENTRY control (Left lane) or pCMV6-ENTRY HAGHL ([RC200832], Right lane) cDNA for 48 hrs and lysed. Equivalent amounts of cell lysates (5 ug per lane) were separated by SDS-PAGE and immunoblotted with anti-HAGHL. Positive lysates [LY410246] (100ug) and [LC410246] (20ug) can be purchased separately from OriGene.



Anti-HAGHL mouse monoclonal antibody ([TA502401]) immunofluorescent staining of COS7 cells transiently transfected by pCMV6-ENTRY HAGHL ([RC200832]).



HEK293T cells transfected with either [RC200832] overexpress plasmid (Red) or empty vector control plasmid (Blue) were immunostained by anti-HAGHL antibody ([TA502401]), and then analyzed by flow cytometry.