

## Product datasheet for **CF502393**

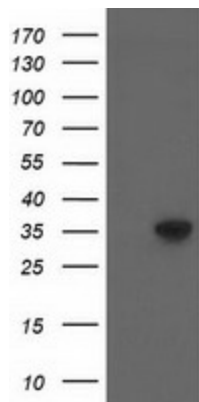
### ACY3 Mouse Monoclonal Antibody [Clone ID: OTI4H7]

#### Product data:

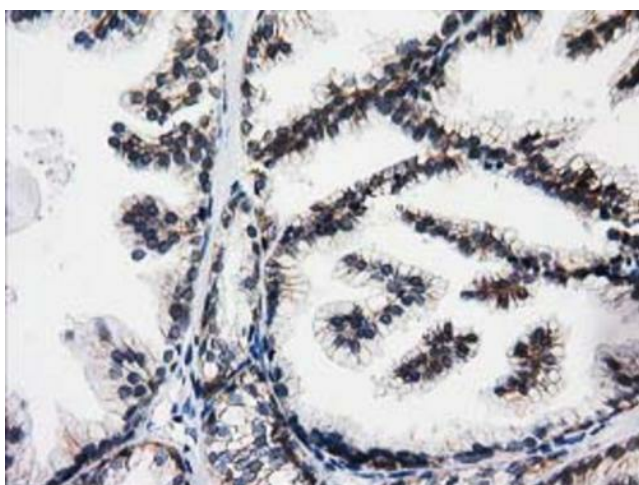
Product Type:	Primary Antibodies
Clone Name:	OTI4H7
Applications:	FC, IHC, WB
Recommended Dilution:	WB 1:1000~2000, IHC 1:150, FLOW 1:100
Reactivity:	Human, Dog, Monkey
Host:	Mouse
Isotype:	IgG1
Clonality:	Monoclonal
Immunogen:	Full length human recombinant protein of human ACY3 (NP_542389) produced in HEK293T cell.
Formulation:	Lyophilized powder (original buffer 1X PBS, pH 7.3, 8% trehalose)
Reconstitution Method:	For reconstitution, we recommend adding 100uL distilled water to a final antibody concentration of about 1 mg/mL. To use this carrier-free antibody for conjugation experiment, we strongly recommend performing another round of desalting process. (OriGene recommends Zeba Spin Desalting Columns, 7KMWCO from Thermo Scientific)
Purification:	Purified from mouse ascites fluids or tissue culture supernatant by affinity chromatography (protein A/G)
Conjugation:	Unconjugated
Storage:	Store at -20°C as received.
Stability:	Stable for 12 months from date of receipt.
Predicted Protein Size:	35.1 kDa
Gene Name:	aminoacylase 3
Database Link:	<a href="#">NP_542389</a> <a href="#">Entrez Gene 100683126 Dog</a> <a href="#">Entrez Gene 711083 Monkey</a> <a href="#">Entrez Gene 91703 Human</a> <a href="#">Q96HD9</a>
Synonyms:	ACY-3; HCBP1
Protein Pathways:	Alanine, aspartate and glutamate metabolism, Histidine metabolism



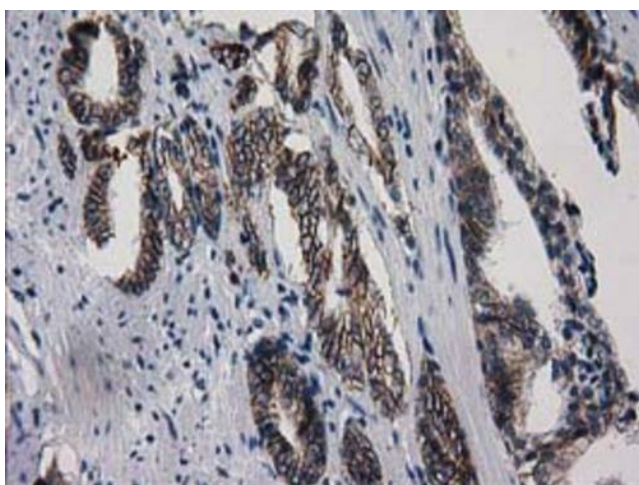
[View online »](#)

**Product images:**

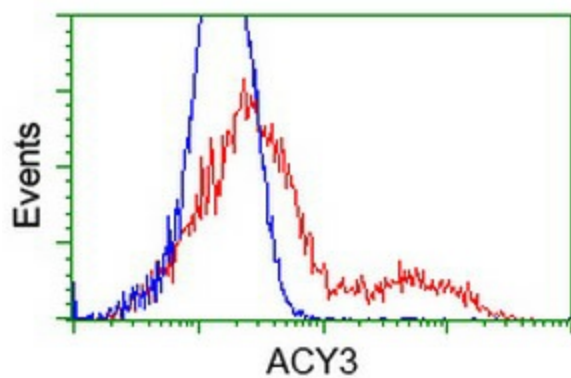
HEK293T cells were transfected with the pCMV6-ENTRY control (Left lane) or pCMV6-ENTRY ACY3 ([RC202287], Right lane) cDNA for 48 hrs and lysed. Equivalent amounts of cell lysates (5 ug per lane) were separated by SDS-PAGE and immunoblotted with anti-ACY3. Positive lysates [LY408962] (100ug) and [LC408962] (20ug) can be purchased separately from OriGene.



Immunohistochemical staining of paraffin-embedded Human prostate tissue within the normal limits using anti-ACY3 mouse monoclonal antibody. (Heat-induced epitope retrieval by 10mM citric buffer, pH6.0, 100°C for 10min, [TA502393])



Immunohistochemical staining of paraffin-embedded Carcinoma of Human prostate tissue using anti-ACY3 mouse monoclonal antibody. (Heat-induced epitope retrieval by 10mM citric buffer, pH6.0, 100°C for 10min, [TA502393])



HEK293T cells transfected with either [RC202287] overexpress plasmid (Red) or empty vector control plasmid (Blue) were immunostained by anti-ACY3 antibody ([TA502393]), and then analyzed by flow cytometry.