

Product datasheet for **CF502357**

Aquaporin 1 (AQP1) Mouse Monoclonal Antibody [Clone ID: OTI2D10]

Product data:

Product Type:	Primary Antibodies
Clone Name:	OTI2D10
Applications:	FC, IF, IHC, WB
Recommended Dilution:	WB 1:2000, IHC 1:150, IF 1:100, FLOW 1:100
Reactivity:	Human, Mouse, Rat
Host:	Mouse
Isotype:	IgG1
Clonality:	Monoclonal
Immunogen:	Full length human recombinant protein of human AQP1 (NP_932766) produced in HEK293T cell.
Formulation:	Lyophilized powder (original buffer 1X PBS, pH 7.3, 8% trehalose)
Reconstitution Method:	For reconstitution, we recommend adding 100uL distilled water to a final antibody concentration of about 1 mg/mL. To use this carrier-free antibody for conjugation experiment, we strongly recommend performing another round of desalting process. (OriGene recommends Zeba Spin Desalting Columns, 7KMWCO from Thermo Scientific)
Purification:	Purified from mouse ascites fluids or tissue culture supernatant by affinity chromatography (protein A/G)
Conjugation:	Unconjugated
Storage:	Store at -20°C as received.
Stability:	Stable for 12 months from date of receipt.
Predicted Protein Size:	28.3 kDa
Gene Name:	Homo sapiens aquaporin 1 (Colton blood group) (AQP1), transcript variant 1, mRNA.
Database Link:	NP_932766 Entrez Gene 11826 Mouse Entrez Gene 25240 Rat Entrez Gene 358 Human P29972



[View online »](#)

Background:

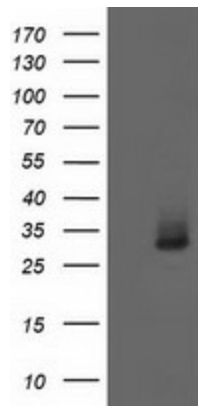
Aquaporins are a family of small integral membrane proteins related to the major intrinsic protein (MIP or AQP0). This gene encodes an aquaporin which functions as a molecular water channel protein. It is a homotetramer with 6 bilayer spanning domains and N-glycosylation sites. The protein physically resembles channel proteins and is abundant in erythrocytes and renal tubes. The gene encoding this aquaporin is a possible candidate for disorders involving imbalance in ocular fluid movement. Several transcript variants encoding different isoforms have been found for this gene. [provided by RefSeq]

Synonyms:

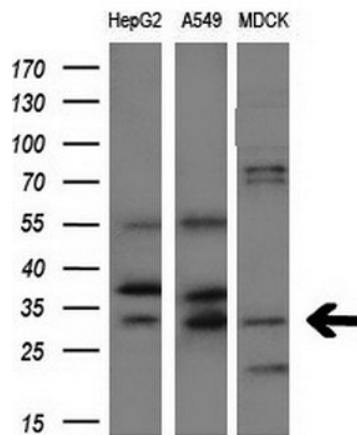
AQP-CHIP; CHIP28; CO

Protein Families:

Druggable Genome, Ion Channels: Other, Transmembrane

Product images:


HEK293T cells were transfected with the pCMV6-ENTRY control (Cat# [PS100001], Left lane) or pCMV6-ENTRY AQP1 (Cat# [RC205304], Right lane) cDNA for 48 hrs and lysed. Equivalent amounts of cell lysates (5 ug per lane) were separated by SDS-PAGE and immunoblotted with anti-AQP1 (Cat# [TA502357]). Positive lysates [LY403670] (100ug) and [LC403670] (20ug) can be purchased separately from OriGene.



Western blot analysis of extracts (10ug) from 3 different cell lines by using anti-AQP1 monoclonal antibody at 1:200 dilution.

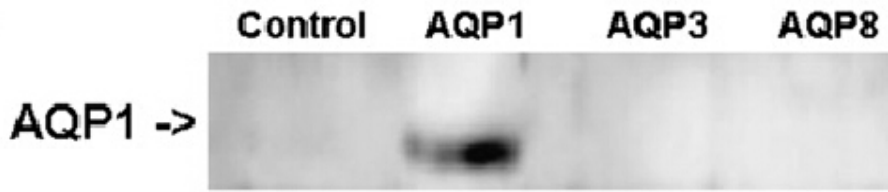
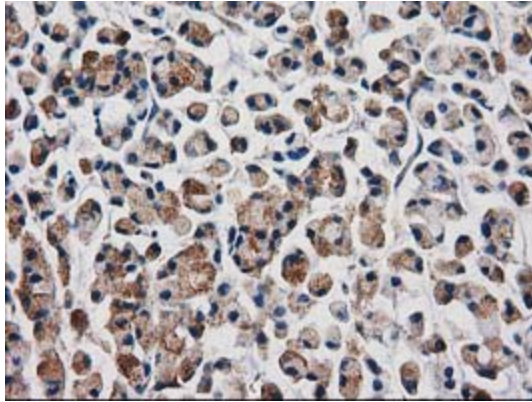
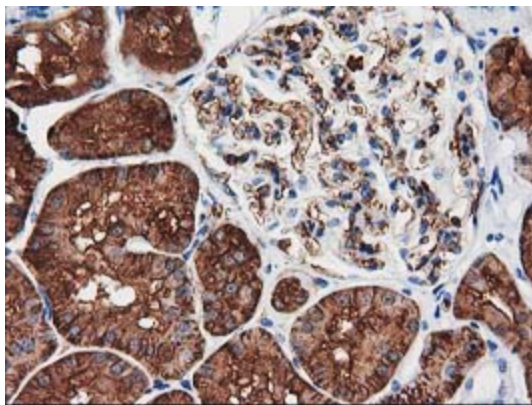


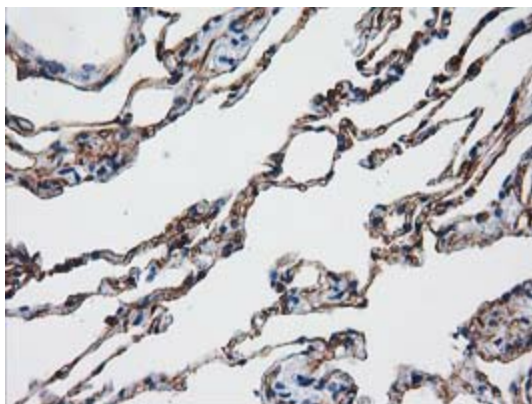
Figure from citation: Western Blot of AQP1 protein level by using anti-AQP1 antibody in human B1647 cells. [View Citation](#)



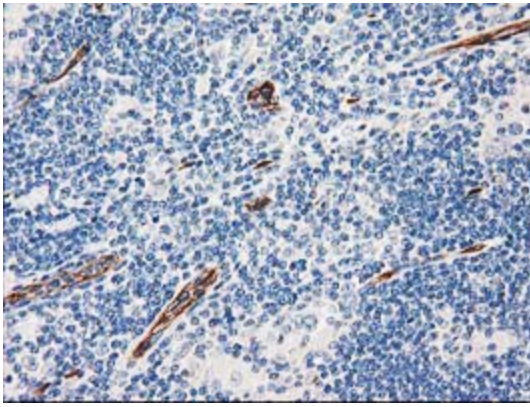
Immunohistochemical staining of paraffin-embedded Adenocarcinoma of Human colon tissue using anti-AQP1 mouse monoclonal antibody. (Heat-induced epitope retrieval by 10mM citric buffer, pH6.0, 100°C for 10min, [TA502357])



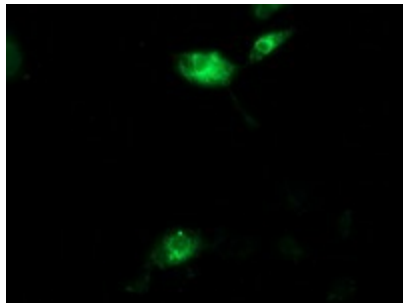
Immunohistochemical staining of paraffin-embedded Human Kidney tissue within the normal limits using anti-AQP1 mouse monoclonal antibody. (Heat-induced epitope retrieval by 10mM citric buffer, pH6.0, 100°C for 10min, [TA502357])



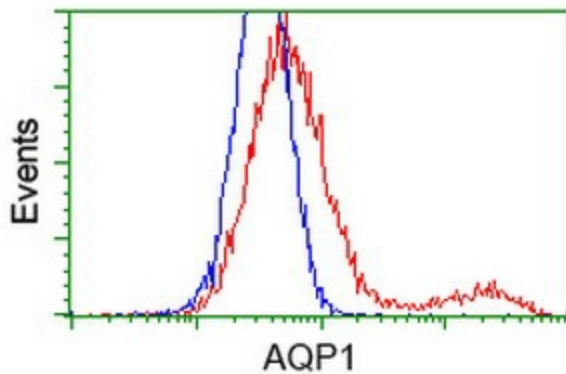
Immunohistochemical staining of paraffin-embedded Human lung tissue within the normal limits using anti-AQP1 mouse monoclonal antibody. (Heat-induced epitope retrieval by 10mM citric buffer, pH6.0, 100°C for 10min, [TA502357])



Immunohistochemical staining of paraffin-embedded Human lymphoma tissue using anti-AQP1 mouse monoclonal antibody. (Heat-induced epitope retrieval by 10mM citric buffer, pH6.0, 100°C for 10min, [TA502357])



Anti-AQP1 mouse monoclonal antibody (TA502357) immunofluorescent staining of COS7 cells transiently transfected by pCMV6-ENTRY AQP1 (RC205304).



HEK293T cells transfected with either [RC205304] overexpress plasmid (Red) or empty vector control plasmid (Blue) were immunostained by anti-AQP1 antibody (TA502357), and then analyzed by flow cytometry.