

## Product datasheet for **CF502352**

### **DCLRE1B Mouse Monoclonal Antibody [Clone ID: OTI2B7]**

#### **Product data:**

Product Type:	Primary Antibodies
Clone Name:	OTI2B7
Applications:	FC, IF, IHC, WB
Recommended Dilution:	WB 1:200~500, IHC 1:150, FLOW 1:100
Reactivity:	Human, Rat
Host:	Mouse
Isotype:	IgG1
Clonality:	Monoclonal
Immunogen:	Human recombinant protein fragment corresponding to amino acids 1-280 of human DCLRE1B(NP_073747) produced in E.coli.
Formulation:	Lyophilized powder (original buffer 1X PBS, pH 7.3, 8% trehalose)
Reconstitution Method:	For reconstitution, we recommend adding 100uL distilled water to a final antibody concentration of about 1 mg/mL. To use this carrier-free antibody for conjugation experiment, we strongly recommend performing another round of desalting process. (OriGene recommends Zeba Spin Desalting Columns, 7KMWCO from Thermo Scientific)
Purification:	Purified from mouse ascites fluids or tissue culture supernatant by affinity chromatography (protein A/G)
Conjugation:	Unconjugated
Storage:	Store at -20°C as received.
Stability:	Stable for 12 months from date of receipt.
Predicted Protein Size:	59.8 kDa
Gene Name:	DNA cross-link repair 1B
Database Link:	<a href="#">NP_073747</a> <a href="#">Entrez Gene 64858 Human</a> <a href="#">Q9H816</a>



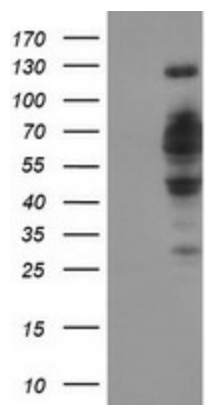
[View online »](#)

**Background:** DNA interstrand cross-links prevent strand separation, thereby physically blocking transcription, replication, and segregation of DNA. DCLRE1B is one of several evolutionarily conserved genes involved in repair of interstrand cross-links (Dronkert et al., 2000 [PubMed 10848582]). [supplied by OMIM]

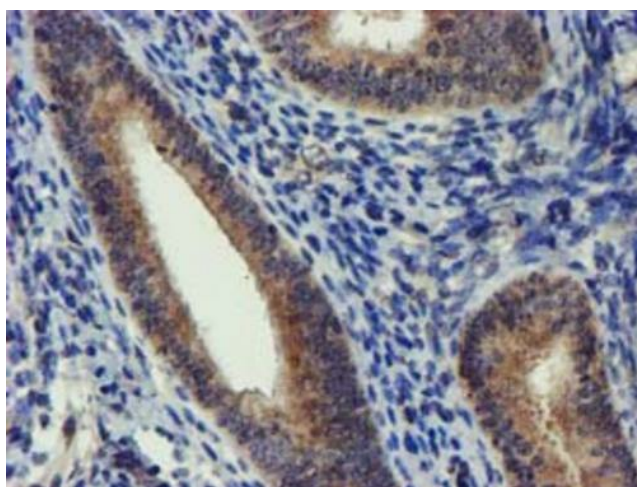
**Synonyms:** APOLLO; SNM1B; SNMIB

**Protein Families:** Druggable Genome

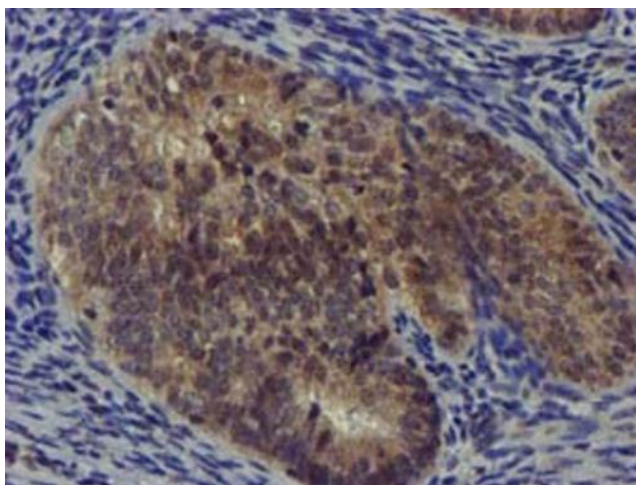
### Product images:



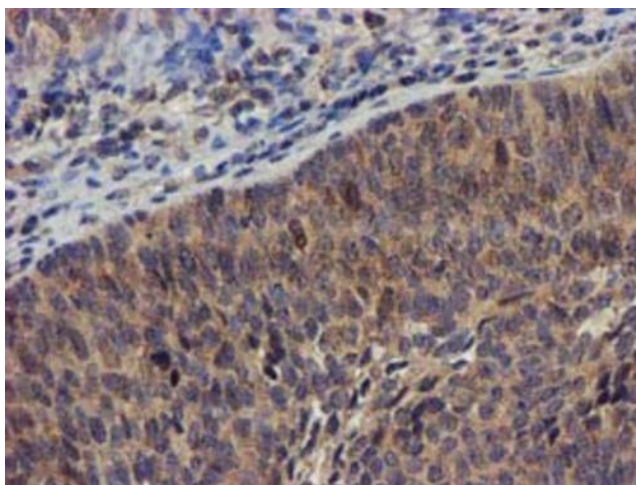
HEK293T cells were transfected with the pCMV6-ENTRY control (Cat# [PS100001], Left lane) or pCMV6-ENTRY DCLRE1B (Cat# [RC205744], Right lane) cDNA for 48 hrs and lysed. Equivalent amounts of cell lysates (5 ug per lane) were separated by SDS-PAGE and immunoblotted with anti-DCLRE1B (Cat# [TA502352]). Positive lysates [LY411532] (100ug) and [LC411532] (20ug) can be purchased separately from OriGene.



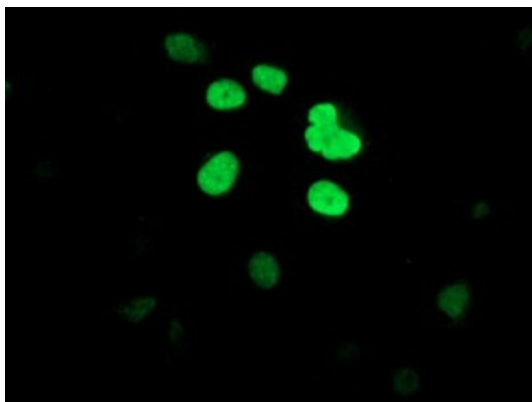
Immunohistochemical staining of paraffin-embedded Human endometrium tissue within the normal limits using anti-DCLRE1B mouse monoclonal antibody. Heat-induced epitope retrieval by EDTA solution buffer pH 8.0 at 120°C for 3 min.



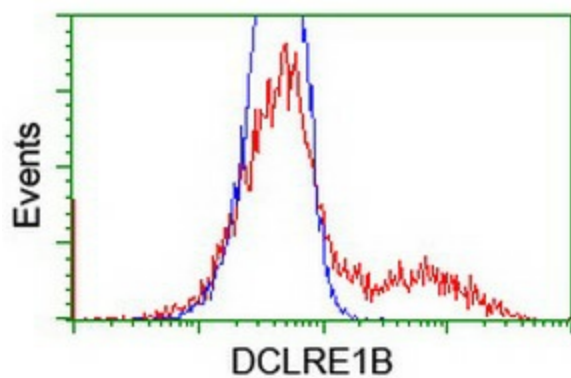
Immunohistochemical staining of paraffin-embedded Adenocarcinoma of Human endometrium tissue using anti-DCLRE1B mouse monoclonal antibody. Heat-induced epitope retrieval by EDTA solution buffer pH 8.0 at 120°C for 3 min.



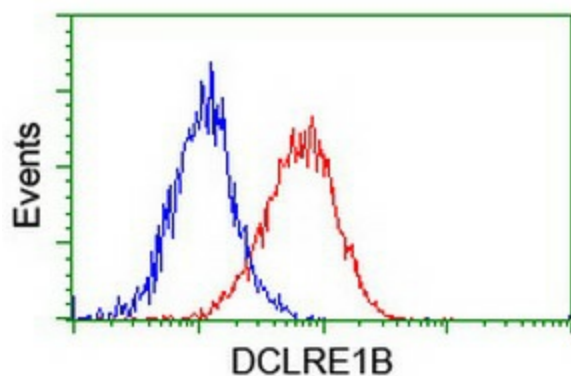
Immunohistochemical staining of paraffin-embedded Carcinoma of Human bladder tissue using anti-DCLRE1B mouse monoclonal antibody. Heat-induced epitope retrieval by EDTA solution buffer pH 8.0 at 120°C for 3 min.



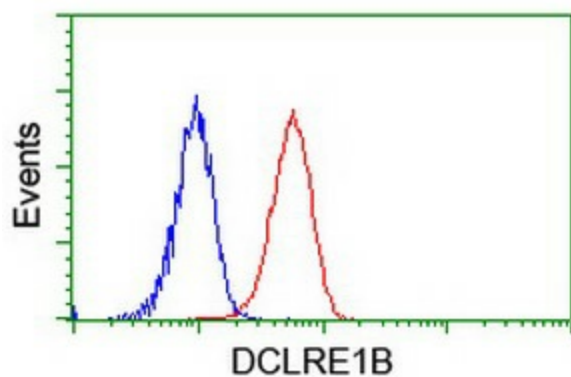
Anti-DCLRE1B mouse monoclonal antibody ([TA502352]) immunofluorescent staining of COS7 cells transiently transfected by pCMV6-ENTRY DCLRE1B ([RC205744]) (1:100).



HEK293T cells transfected with either [RC205744] overexpress plasmid (Red) or empty vector control plasmid (Blue) were immunostained by anti-DCLRE1B antibody ([TA502352]), and then analyzed by flow cytometry.



Flow cytometric Analysis of HeLa cells, using anti-DCLRE1B antibody ([TA502352]), (Red), compared to a nonspecific negative control antibody, (Blue).



Flow cytometric Analysis of Jurkat cells, using anti-DCLRE1B antibody ([TA502352]), (Red), compared to a nonspecific negative control antibody, (Blue).