

## Product datasheet for **CF502336**

### PNMA3 Mouse Monoclonal Antibody [Clone ID: OTI1C3]

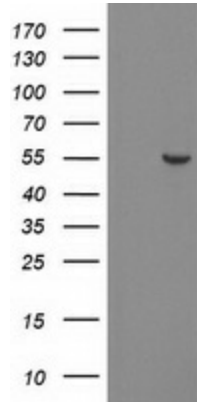
#### Product data:

Product Type:	Primary Antibodies
Clone Name:	OTI1C3
Applications:	FC, IHC, WB
Recommended Dilution:	WB 1:500, IHC 1:150, FLOW 1:100
Reactivity:	Human
Host:	Mouse
Isotype:	IgG1
Clonality:	Monoclonal
Immunogen:	Full length human recombinant protein of human PNMA3 (NP_037496) produced in E.coli.
Formulation:	Lyophilized powder (original buffer 1X PBS, pH 7.3, 8% trehalose)
Reconstitution Method:	For reconstitution, we recommend adding 100uL distilled water to a final antibody concentration of about 1 mg/mL. To use this carrier-free antibody for conjugation experiment, we strongly recommend performing another round of desalting process. (OriGene recommends Zeba Spin Desalting Columns, 7KMWCO from Thermo Scientific)
Purification:	Purified from mouse ascites fluids or tissue culture supernatant by affinity chromatography (protein A/G)
Conjugation:	Unconjugated
Storage:	Store at -20°C as received.
Stability:	Stable for 12 months from date of receipt.
Predicted Protein Size:	52.2 kDa
Gene Name:	PNMA family member 3
Database Link:	<a href="#">NP_037496</a> <a href="#">Entrez Gene 29944 Human</a> <a href="#">Q9UL41</a>
Synonyms:	MA3; MA5

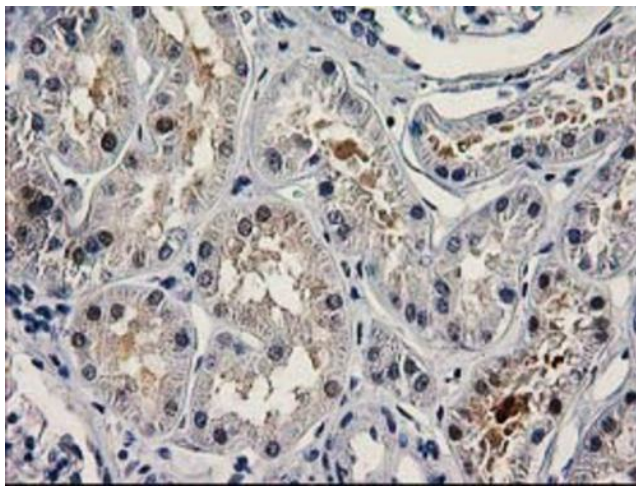


[View online »](#)

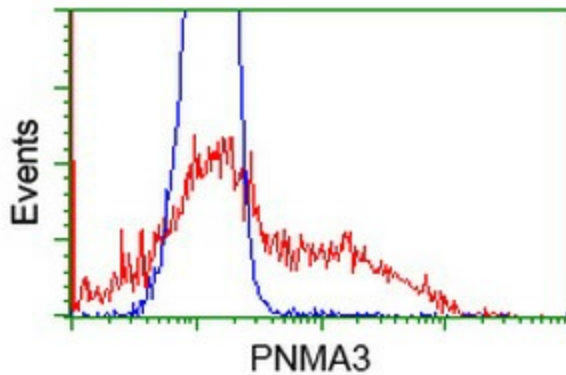
**Product images:**



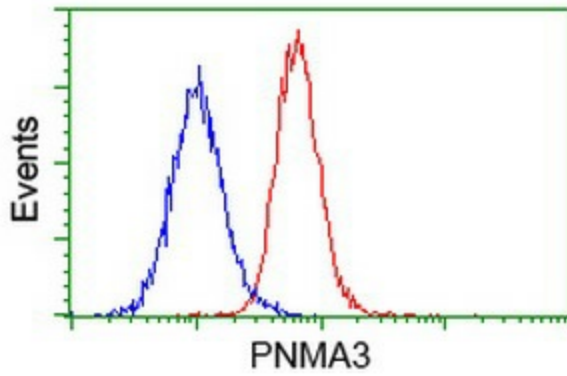
HEK293T cells were transfected with the pCMV6-ENTRY control (Cat# [PS100001], Left lane) or pCMV6-ENTRY PNMA3 (Cat# [RC218987], Right lane) cDNA for 48 hrs and lysed. Equivalent amounts of cell lysates (5 ug per lane) were separated by SDS-PAGE and immunoblotted with anti-PNMA3 (Cat# [TA502336]). Positive lysates [LY415667] (100ug) and [LC415667] (20ug) can be purchased separately from OriGene.



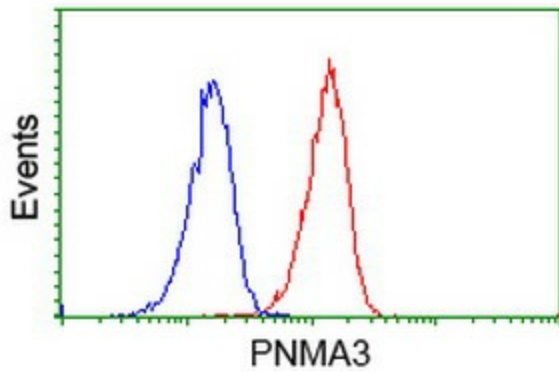
Immunohistochemical staining of paraffin-embedded Human Kidney tissue within the normal limits using anti-PNMA3 mouse monoclonal antibody. (Heat-induced epitope retrieval by 10mM citric buffer, pH6.0, 100°C for 10min, [TA502336])



HEK293T cells transfected with either [RC218987] overexpress plasmid (Red) or empty vector control plasmid (Blue) were immunostained by anti-PNMA3 antibody ([TA502336]), and then analyzed by flow cytometry.



Flow cytometric Analysis of HeLa cells, using anti-PNMA3 antibody (TA502336), (Red), compared to a nonspecific negative control antibody, (Blue).



Flow cytometric Analysis of Jurkat cells, using anti-PNMA3 antibody (TA502336), (Red), compared to a nonspecific negative control antibody, (Blue).