

## Product datasheet for **CF502320**

### **PDE2A Mouse Monoclonal Antibody [Clone ID: OT1G9]**

#### **Product data:**

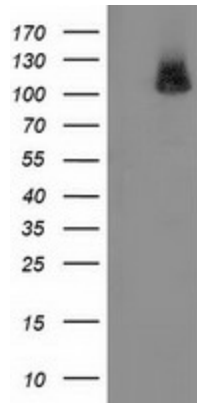
<b>Product Type:</b>	Primary Antibodies
<b>Clone Name:</b>	OT1G9
<b>Applications:</b>	FC, IHC, WB
<b>Recommended Dilution:</b>	WB 1:2000, IHC 1:150, FLOW 1:100
<b>Reactivity:</b>	Human, Mouse, Rat
<b>Host:</b>	Mouse
<b>Isotype:</b>	IgG1
<b>Clonality:</b>	Monoclonal
<b>Immunogen:</b>	Full length human recombinant protein of human PDE2A (NP_002590) produced in HEK293T cell.
<b>Formulation:</b>	Lyophilized powder (original buffer 1X PBS, pH 7.3, 8% trehalose)
<b>Reconstitution Method:</b>	For reconstitution, we recommend adding 100uL distilled water to a final antibody concentration of about 1 mg/mL. To use this carrier-free antibody for conjugation experiment, we strongly recommend performing another round of desalting process. (OriGene recommends Zeba Spin Desalting Columns, 7KMWCO from Thermo Scientific)
<b>Purification:</b>	Purified from mouse ascites fluids or tissue culture supernatant by affinity chromatography (protein A/G)
<b>Conjugation:</b>	Unconjugated
<b>Storage:</b>	Store at -20°C as received.
<b>Stability:</b>	Stable for 12 months from date of receipt.
<b>Predicted Protein Size:</b>	105.5 kDa
<b>Gene Name:</b>	phosphodiesterase 2A
<b>Database Link:</b>	<a href="#">NP_002590</a> <a href="#">Entrez Gene 81743 Rat</a> <a href="#">Entrez Gene 207728 Mouse</a> <a href="#">Entrez Gene 5138 Human</a> <a href="#">O00408</a>
<b>Synonyms:</b>	CGS-PDE; cGSPDE; PDE2A1; PED2A4
<b>Protein Families:</b>	Druggable Genome



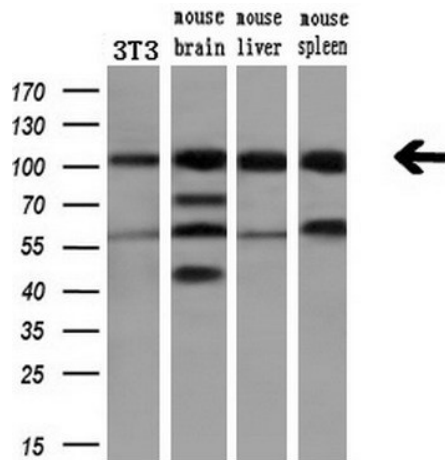
[View online »](#)

Protein Pathways: Progesterone-mediated oocyte maturation, Purine metabolism

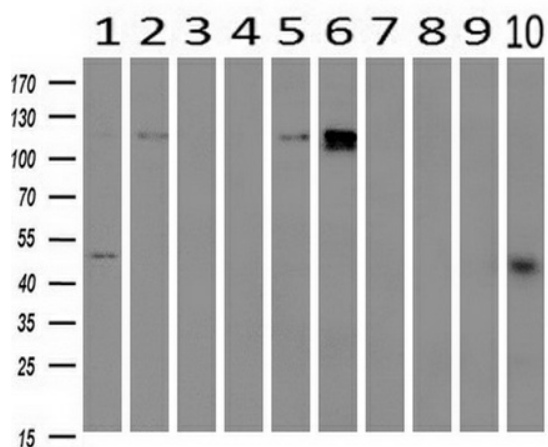
**Product images:**



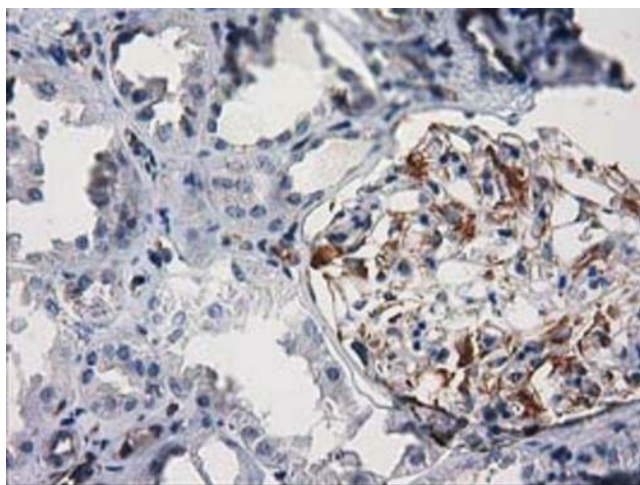
HEK293T cells were transfected with the pCMV6-ENTRY control (Cat# [PS100001], Left lane) or pCMV6-ENTRY PDE2A (Cat# [RC207219], Right lane) cDNA for 48 hrs and lysed. Equivalent amounts of cell lysates (5 ug per lane) were separated by SDS-PAGE and immunoblotted with anti-PDE2A(Cat# [TA502320]). Positive lysates [LY419215] (100ug) and [LC419215] (20ug) can be purchased separately from OriGene.



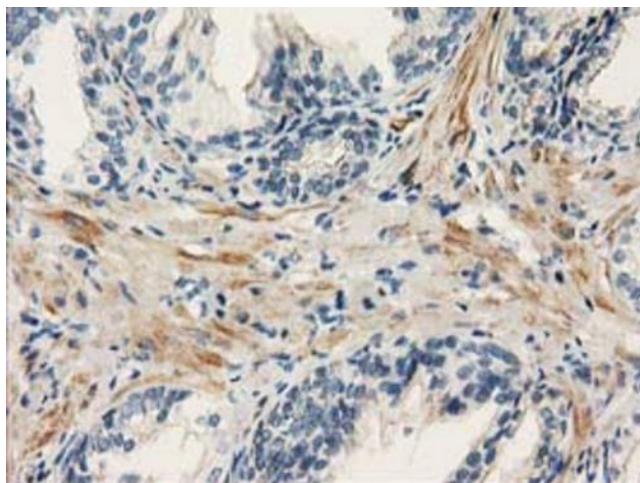
Western blot analysis of extracts (10ug) from a mouse cell line and 3 different mouse tissues by using anti-PDE2A monoclonal antibody (1:200).



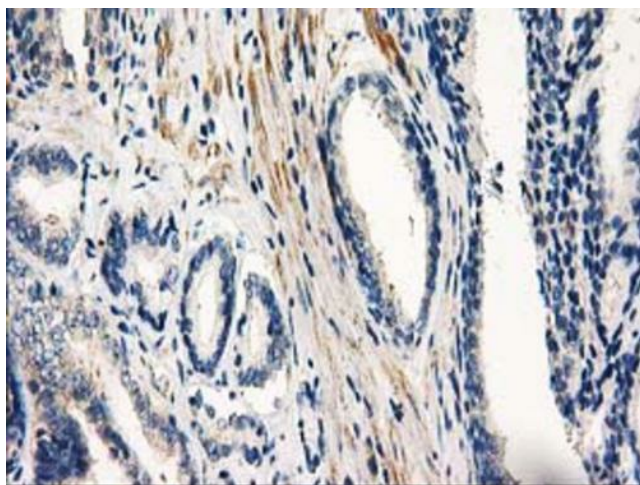
Western blot analysis of extracts (10ug) from 10 Human tissue by using anti-PDE2A monoclonal antibody at 1:200 (1: Testis; 2: Omentum; 3: Uterus; 4: Breast; 5: Brain; 6: Liver; 7: Ovary; 8: Thyroid gland; 9: colon;10: spleen).



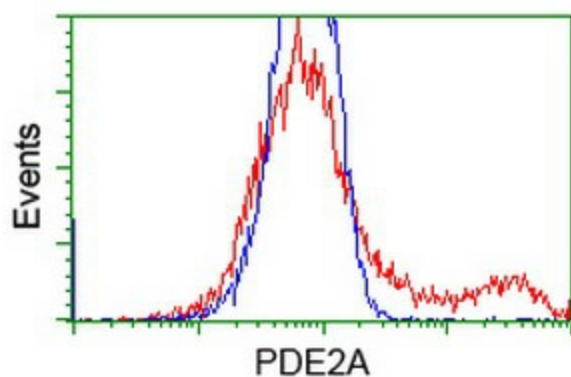
Immunohistochemical staining of paraffin-embedded Human Kidney tissue within the normal limits using anti-PDE2A mouse monoclonal antibody. Heat-induced epitope retrieval by EDTA solution buffer pH 8.0 at 120°C for 3 min.



Immunohistochemical staining of paraffin-embedded Human prostate tissue within the normal limits using anti-PDE2A mouse monoclonal antibody. Heat-induced epitope retrieval by EDTA solution buffer pH 8.0 at 120°C for 3 min.



Immunohistochemical staining of paraffin-embedded Carcinoma of Human prostate tissue using anti-PDE2A mouse monoclonal antibody. Heat-induced epitope retrieval by EDTA solution buffer pH 8.0 at 120°C for 3 min.



HEK293T cells transfected with either [RC207219] overexpress plasmid (Red) or empty vector control plasmid (Blue) were immunostained by anti-PDE2A antibody ([TA502320]), and then analyzed by flow cytometry.