

## Product datasheet for **CF502286**

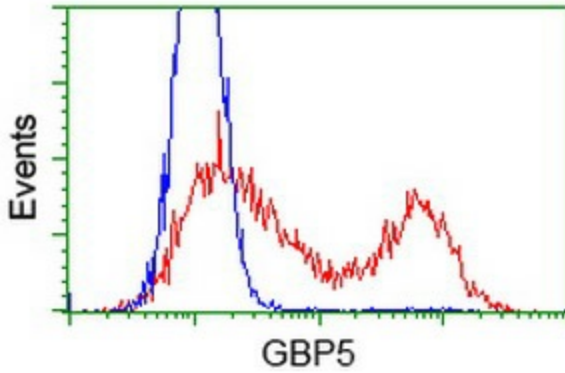
### GBP5 Mouse Monoclonal Antibody [Clone ID: OTI8B12]

#### Product data:

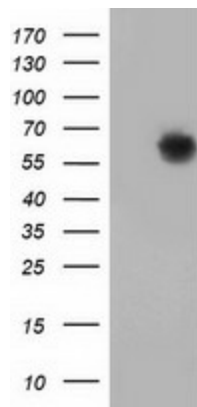
Product Type:	Primary Antibodies
Clone Name:	OTI8B12
Applications:	FC, WB
Recommended Dilution:	WB 1:2000, FLOW 1:100
Reactivity:	Human
Host:	Mouse
Isotype:	IgG1
Clonality:	Monoclonal
Immunogen:	Full length human recombinant protein of human GBP5 (NP_443174) produced in HEK293T cell.
Formulation:	Lyophilized powder (original buffer 1X PBS, pH 7.3, 8% trehalose)
Reconstitution Method:	For reconstitution, we recommend adding 100uL distilled water to a final antibody concentration of about 1 mg/mL. To use this carrier-free antibody for conjugation experiment, we strongly recommend performing another round of desalting process. (OriGene recommends Zeba Spin Desalting Columns, 7KMWCO from Thermo Scientific)
Purification:	Purified from mouse ascites fluids or tissue culture supernatant by affinity chromatography (protein A/G)
Conjugation:	Unconjugated
Storage:	Store at -20°C as received.
Stability:	Stable for 12 months from date of receipt.
Predicted Protein Size:	66.4 kDa
Gene Name:	guanylate binding protein 5
Database Link:	<a href="#">NP_443174</a> <a href="#">Entrez Gene 115362 Human</a> <a href="#">Q96PP8</a>
Synonyms:	GBP-5



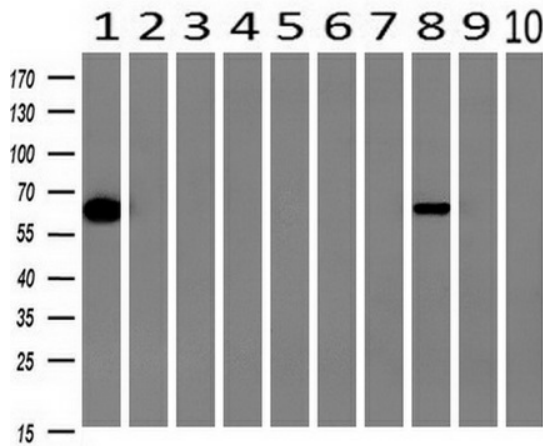
[View online »](#)

**Product images:**


HEK293T cells transfected with either [RC206627] overexpress plasmid (Red) or empty vector control plasmid (Blue) were immunostained by anti-GBP5 antibody ([TA502286]), and then analyzed by flow cytometry.



HEK293T cells were transfected with the pCMV6-ENTRY control (Cat# [PS100001], Left lane) or pCMV6-ENTRY GBP5 (Cat# [RC206627], Right lane) cDNA for 48 hrs and lysed. Equivalent amounts of cell lysates (5 ug per lane) were separated by SDS-PAGE and immunoblotted with anti-GBP5 (Cat# [TA502286]). Positive lysates [LY409377] (100ug) and [LC409377] (20ug) can be purchased separately from OriGene.



Western blot analysis of extracts (10ug) from 10 Human tissue by using anti-GBP5 monoclonal antibody at 1:200 (1: Testis; 2: Omentum; 3: Uterus; 4: Breast; 5: Brain; 6: Liver; 7: Ovary; 8: Thyroid gland; 9: colon; 10: spleen).