

Product datasheet for **CF502280**

MOB4A (MOB1B) Mouse Monoclonal Antibody [Clone ID: OTI2H4]

Product data:

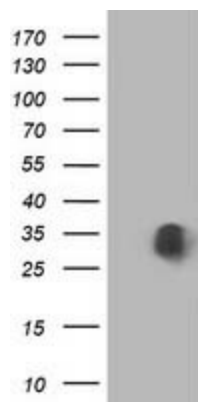
| | |
|--------------------------------|--|
| Product Type: | Primary Antibodies |
| Clone Name: | OTI2H4 |
| Applications: | FC, WB |
| Recommended Dilution: | WB 1:2000, FLOW 1:100 |
| Reactivity: | Human, Mouse, Rat |
| Host: | Mouse |
| Isotype: | IgG2b |
| Clonality: | Monoclonal |
| Immunogen: | Full length human recombinant protein of human MOBKL1A(NP_775739) produced in HEK293T cell. |
| Formulation: | Lyophilized powder (original buffer 1X PBS, pH 7.3, 8% trehalose) |
| Reconstitution Method: | For reconstitution, we recommend adding 100uL distilled water to a final antibody concentration of about 1 mg/mL. To use this carrier-free antibody for conjugation experiment, we strongly recommend performing another round of desalting process. (OriGene recommends Zeba Spin Desalting Columns, 7KMWCO from Thermo Scientific) |
| Purification: | Purified from mouse ascites fluids or tissue culture supernatant by affinity chromatography (protein A/G) |
| Conjugation: | Unconjugated |
| Storage: | Store at -20°C as received. |
| Stability: | Stable for 12 months from date of receipt. |
| Predicted Protein Size: | 24.9 kDa |
| Gene Name: | MOB kinase activator 1B |
| Database Link: | NP_775739 Entrez Gene 68473 Mouse Entrez Gene 360920 Rat Entrez Gene 92597 Human Q7L9L4 |
| Background: | The protein encoded by this gene is similar to the yeast Mob1 protein. Yeast Mob1 binds Mps1p, a protein kinase essential for spindle pole body duplication and mitotic checkpoint regulation. [provided by RefSeq]. COMPLETENESS: complete on the 3' end. |



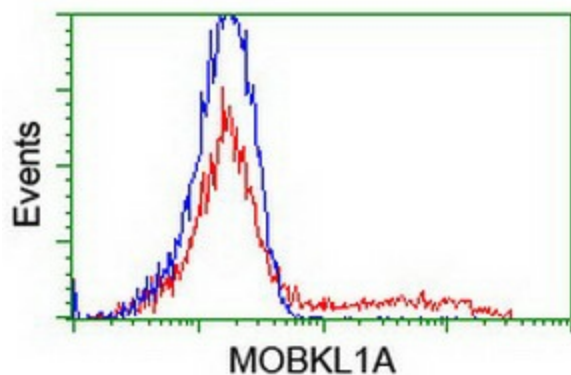
[View online »](#)

Synonyms: MATS2; MOB4A; MOBKL1A

Product images:



HEK293T cells were transfected with the pCMV6-ENTRY control (Left lane) or pCMV6-ENTRY MOBKL1A ([RC206337], Right lane) cDNA for 48 hrs and lysed. Equivalent amounts of cell lysates (5 ug per lane) were separated by SDS-PAGE and immunoblotted with anti-MOBKL1A. Positive lysates [LY406621] (100ug) and [LC406621] (20ug) can be purchased separately from OriGene.



HEK293T cells transfected with either [RC206337] overexpress plasmid (Red) or empty vector control plasmid (Blue) were immunostained by anti-MOBKL1A antibody ([TA502280]), and then analyzed by flow cytometry.