

## Product datasheet for **CF502249**

### **PACSIN3 Mouse Monoclonal Antibody [Clone ID: OTI4F8]**

#### **Product data:**

<b>Product Type:</b>	Primary Antibodies
<b>Clone Name:</b>	OTI4F8
<b>Applications:</b>	FC, IHC, WB
<b>Recommended Dilution:</b>	WB 1:1000~2000, IHC 1:150, FLOW 1:100
<b>Reactivity:</b>	Human, Mouse, Rat
<b>Host:</b>	Mouse
<b>Isotype:</b>	IgG1
<b>Clonality:</b>	Monoclonal
<b>Immunogen:</b>	Full length human recombinant protein of human PACSIN3 (NP_057307) produced in HEK293T cell.
<b>Formulation:</b>	Lyophilized powder (original buffer 1X PBS, pH 7.3, 8% trehalose)
<b>Reconstitution Method:</b>	For reconstitution, we recommend adding 100uL distilled water to a final antibody concentration of about 1 mg/mL. To use this carrier-free antibody for conjugation experiment, we strongly recommend performing another round of desalting process. (OriGene recommends Zeba Spin Desalting Columns, 7KMWCO from Thermo Scientific)
<b>Purification:</b>	Purified from mouse ascites fluids or tissue culture supernatant by affinity chromatography (protein A/G)
<b>Conjugation:</b>	Unconjugated
<b>Storage:</b>	Store at -20°C as received.
<b>Stability:</b>	Stable for 12 months from date of receipt.
<b>Predicted Protein Size:</b>	48.3 kDa
<b>Gene Name:</b>	protein kinase C and casein kinase substrate in neurons 3
<b>Database Link:</b>	<a href="#">NP_057307</a> <a href="#">Entrez Gene 80708 Mouse</a> <a href="#">Entrez Gene 311187 Rat</a> <a href="#">Entrez Gene 29763 Human</a> <a href="#">Q9UKS6</a>
<b>Background:</b>	This gene is a member of the protein kinase C and casein kinase substrate in neurons family. The encoded protein is involved in linking the actin cytoskeleton with vesicle formation. Alternative splicing results in multiple transcript variants. [provided by RefSeq]

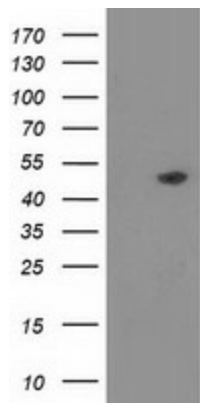


[View online >](#)

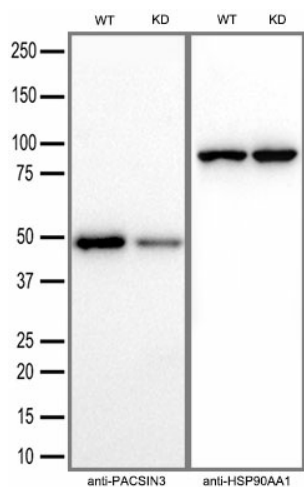
**Synonyms:** SDPIII

**Protein Families:** Druggable Genome

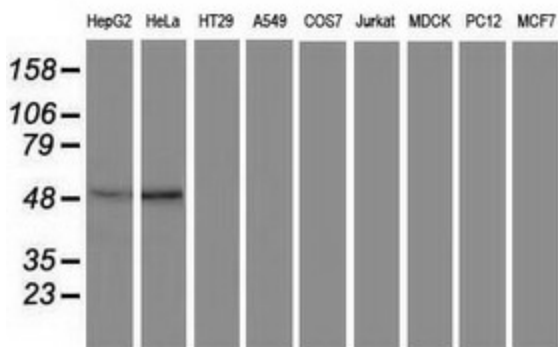
**Product images:**



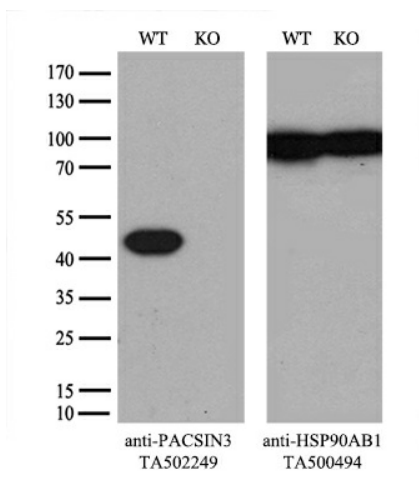
HEK293T cells were transfected with the pCMV6-ENTRY control (Cat# [PS100001], Left lane) or pCMV6-ENTRY PAC SIN3 (Cat# [RC204103], Right lane) cDNA for 48 hrs and lysed. Equivalent amounts of cell lysates (5 ug per lane) were separated by SDS-PAGE and immunoblotted with anti-PAC SIN3(Cat# [TA502249]). Positive lysates [LY414084] (100ug) and [LC414084] (20ug) can be purchased separately from OriGene.



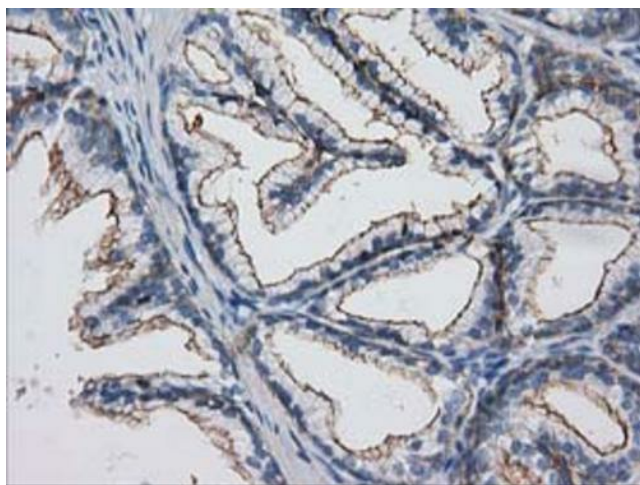
Equivalent amounts of cell lysates (30 ug per lane) of wild-type HAP-1 cells (WT) and PAC SIN3-Knockdown HAP-1 cells (KD) were separated by SDS-PAGE and immunoblotted with anti-PAC SIN3 monoclonal antibody [TA502249] (1:5000). Then the blotted membrane was stripped and reprobed with anti-HSP90AA1 antibody as a loading control.



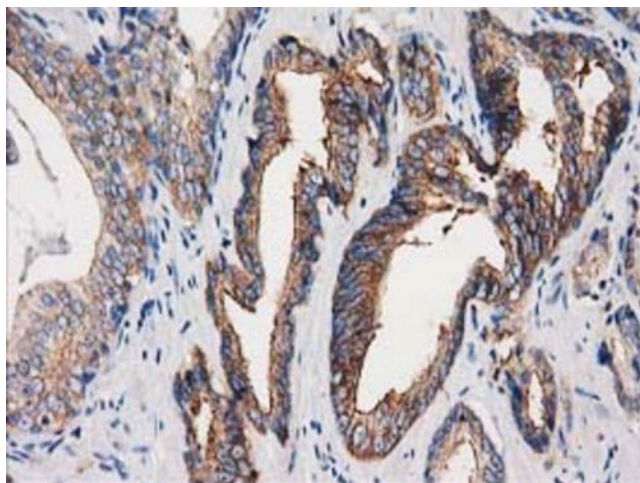
Western blot analysis of extracts (35ug) from 9 different cell lines by using anti-PAC SIN3 monoclonal antibody.



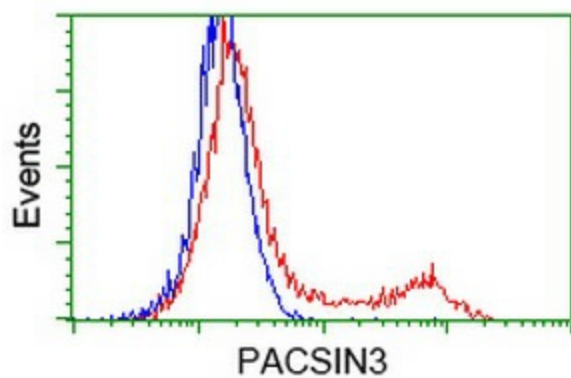
Equivalent amounts of cell lysates (10 ug per lane) of wild-type 293T cells (WT, Cat# LC810293T) and PACSIN3-Knockout 293T cells (KO, Cat# [LC812043]) were separated by SDS-PAGE and immunoblotted with anti-PACSIN3 monoclonal antibody [TA502249], (1:500). Then the blotted membrane was stripped and reprobed with anti-HSP90AB1 antibody ([TA500494]) as a loading control.



Immunohistochemical staining of paraffin-embedded Human prostate tissue within the normal limits using anti-PACSIN3 mouse monoclonal antibody. Heat-induced epitope retrieval by EDTA solution buffer pH 8.0 at 120°C for 3 min.



Immunohistochemical staining of paraffin-embedded Carcinoma of Human prostate tissue using anti-PACSIN3 mouse monoclonal antibody. Heat-induced epitope retrieval by EDTA solution buffer pH 8.0 at 120°C for 3 min.



HEK293T cells transfected with either [RC204103] overexpress plasmid (Red) or empty vector control plasmid (Blue) were immunostained by anti-PACSIN3 antibody ([TA502249]), and then analyzed by flow cytometry.