

## Product datasheet for **CF502204**

### MTMR2 Mouse Monoclonal Antibody [Clone ID: OTI5G5]

#### Product data:

Product Type:	Primary Antibodies
Clone Name:	OTI5G5
Applications:	FC, WB
Recommended Dilution:	WB 1:1000, FLOW 1:100
Reactivity:	Human, Mouse, Rat
Host:	Mouse
Isotype:	IgG1
Clonality:	Monoclonal
Immunogen:	Full length human recombinant protein of human MTMR2(NP_057240) produced in HEK293T cell.
Formulation:	Lyophilized powder (original buffer 1X PBS, pH 7.3, 8% trehalose)
Reconstitution Method:	For reconstitution, we recommend adding 100uL distilled water to a final antibody concentration of about 1 mg/mL. To use this carrier-free antibody for conjugation experiment, we strongly recommend performing another round of desalting process. (OriGene recommends Zeba Spin Desalting Columns, 7KMWCO from Thermo Scientific)
Purification:	Purified from mouse ascites fluids or tissue culture supernatant by affinity chromatography (protein A/G)
Conjugation:	Unconjugated
Storage:	Store at -20°C as received.
Stability:	Stable for 12 months from date of receipt.
Predicted Protein Size:	73.2 kDa
Gene Name:	myotubularin related protein 2
Database Link:	<a href="#">NP_057240</a> <a href="#">Entrez Gene 315422 Rat</a> <a href="#">Entrez Gene 8898 Human</a> <a href="#">Q13614</a>



[View online »](#)

**Background:**

This gene is a member of the myotubularin family. The encoded protein possesses phosphatase activity towards phosphatidylinositol-3-phosphate and phosphatidylinositol-3,5-bisphosphate. Mutations in this gene are a cause of Charcot-Marie-Tooth disease type 4B, an autosomal recessive demyelinating neuropathy. Multiple alternatively spliced transcript variants have been found for this gene. [provided by RefSeq]

**Synonyms:**

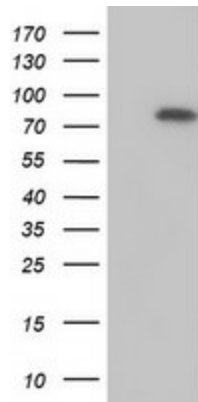
CMT4B; CMT4B1

**Protein Families:**

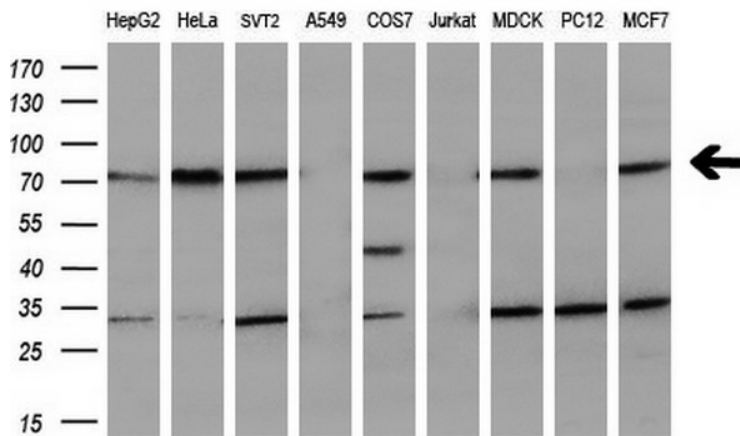
Druggable Genome, Phosphatase

**Protein Pathways:**

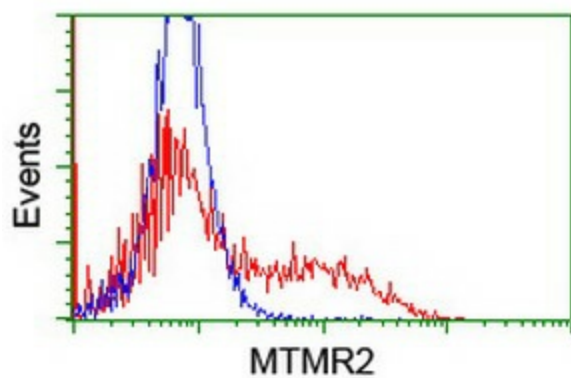
Fructose and mannose metabolism, Metabolic pathways, Riboflavin metabolism, Thiamine metabolism

**Product images:**


HEK293T cells were transfected with the pCMV6-ENTRY control (Cat# [PS100001], Left lane) or pCMV6-ENTRY MTMR2 (Cat# [RC208703], Right lane) cDNA for 48 hrs and lysed. Equivalent amounts of cell lysates (5 ug per lane) were separated by SDS-PAGE and immunoblotted with anti-MTMR2 (Cat# [TA502204]). Positive lysates [LY414151] (100ug) and [LC414151] (20ug) can be purchased separately from OriGene.



Western blot analysis of extracts (35ug) from 9 different cell lines by using anti-MTMR2 monoclonal antibody (HepG2: human; HeLa: human; SVT2: mouse; A549: human; COS7: monkey; Jurkat: human; MDCK: canine; PC12: rat; MCF7: human) (1:200).



HEK293T cells transfected with either [RC208703] overexpress plasmid (Red) or empty vector control plasmid (Blue) were immunostained by anti-MTMR2 antibody ([TA502204]), and then analyzed by flow cytometry.