

## Product datasheet for **CF502191**

### **SAP102 (DLG3) Mouse Monoclonal Antibody [Clone ID: OTI5F1]**

#### **Product data:**

<b>Product Type:</b>	Primary Antibodies
<b>Clone Name:</b>	OTI5F1
<b>Applications:</b>	FC, WB
<b>Recommended Dilution:</b>	WB 1:2000, FLOW 1:100
<b>Reactivity:</b>	Human, Mouse, Rat
<b>Host:</b>	Mouse
<b>Isotype:</b>	IgG1
<b>Clonality:</b>	Monoclonal
<b>Immunogen:</b>	Full length human recombinant protein of human DLG3 (NP_066943) produced in HEK293T cell.
<b>Formulation:</b>	Lyophilized powder (original buffer 1X PBS, pH 7.3, 8% trehalose)
<b>Reconstitution Method:</b>	For reconstitution, we recommend adding 100uL distilled water to a final antibody concentration of about 1 mg/mL. To use this carrier-free antibody for conjugation experiment, we strongly recommend performing another round of desalting process. (OriGene recommends Zeba Spin Desalting Columns, 7KMWCO from Thermo Scientific)
<b>Purification:</b>	Purified from mouse ascites fluids or tissue culture supernatant by affinity chromatography (protein A/G)
<b>Conjugation:</b>	Unconjugated
<b>Storage:</b>	Store at -20°C as received.
<b>Stability:</b>	Stable for 12 months from date of receipt.
<b>Predicted Protein Size:</b>	90.1 kDa
<b>Gene Name:</b>	discs large MAGUK scaffold protein 3
<b>Database Link:</b>	<a href="#">NP_066943</a> <a href="#">Entrez Gene 53310 Mouse</a> <a href="#">Entrez Gene 58948 Rat</a> <a href="#">Entrez Gene 1741 Human</a> <a href="#">Q92796</a>



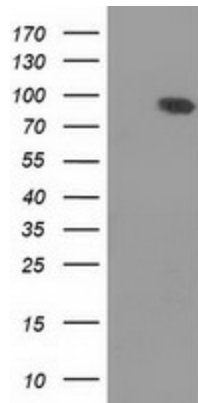
[View online »](#)

**Background:**

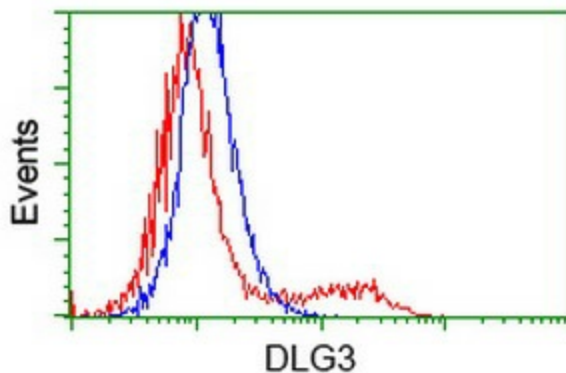
This gene encodes a member of the membrane-associated guanylate kinase protein family. The encoded protein may play a role in clustering of NMDA receptors at excitatory synapses. It may also negatively regulate cell proliferation through interaction with the C-terminal region of the adenomatosis polyposis coli tumor suppressor protein. Mutations in this gene have been associated with X-linked mental retardation. Alternatively spliced transcript variants have been described. [provided by RefSeq]

**Synonyms:**

MRX; MRX90; NEDLG; PPP1R82; SAP102; XLMR

**Product images:**


HEK293T cells were transfected with the pCMV6-ENTRY control (Cat# [PS100001], Left lane) or pCMV6-ENTRY DLG3 (Cat# [RC210860], Right lane) cDNA for 48 hrs and lysed. Equivalent amounts of cell lysates (5 ug per lane) were separated by SDS-PAGE and immunoblotted with anti-DLG3 (Cat# [TA502191]). Positive lysates [LY402837] (100ug) and [LC402837] (20ug) can be purchased separately from OriGene.



HEK293T cells transfected with either [RC210860] overexpress plasmid (Red) or empty vector control plasmid (Blue) were immunostained by anti-DLG3 antibody ([TA502191]), and then analyzed by flow cytometry.