

Product datasheet for **CF502168**

NUMB Mouse Monoclonal Antibody [Clone ID: OTI4F3]

Product data:

Product Type:	Primary Antibodies
Clone Name:	OTI4F3
Applications:	IHC, WB
Recommended Dilution:	WB 1:2000, IHC 1:150
Reactivity:	Human, Mouse, Rat
Host:	Mouse
Isotype:	IgG2a
Clonality:	Monoclonal
Immunogen:	Full length human recombinant protein of human NUMB(NP_003735) produced in HEK293T cell.
Formulation:	Lyophilized powder (original buffer 1X PBS, pH 7.3, 8% trehalose)
Reconstitution Method:	For reconstitution, we recommend adding 100uL distilled water to a final antibody concentration of about 1 mg/mL. To use this carrier-free antibody for conjugation experiment, we strongly recommend performing another round of desalting process. (OriGene recommends Zeba Spin Desalting Columns, 7KMWCO from Thermo Scientific)
Purification:	Purified from mouse ascites fluids or tissue culture supernatant by affinity chromatography (protein A/G)
Conjugation:	Unconjugated
Storage:	Store at -20°C as received.
Stability:	Stable for 12 months from date of receipt.
Predicted Protein Size:	69.3 kDa
Gene Name:	Homo sapiens NUMB endocytic adaptor protein (NUMB), transcript variant 3, mRNA.
Database Link:	NP_003735 Entrez Gene 18222 Mouse Entrez Gene 29419 Rat Entrez Gene 8650 Human P49757



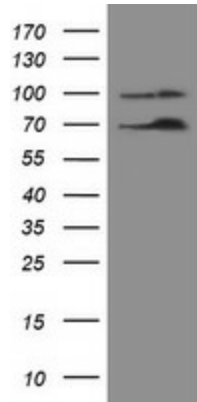
[View online »](#)

Background: The protein encoded by this gene plays a role in the determination of cell fates during development. The encoded protein, whose degradation is induced in a proteasome-dependent manner by MDM2, is a membrane-bound protein that has been shown to associate with EPS15, LNX1, and NOTCH1. Four transcript variants encoding different isoforms have been found for this gene. [provided by RefSeq]

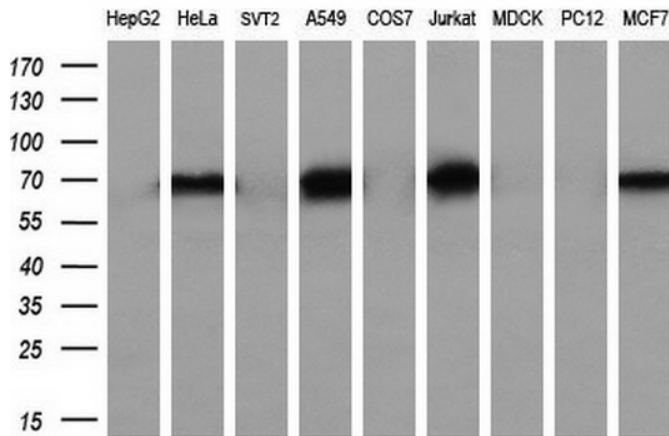
Synonyms: C14orf41; c14_5527; S171

Protein Pathways: Notch signaling pathway

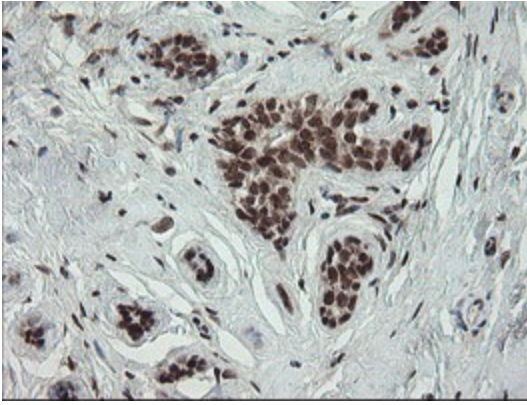
Product images:



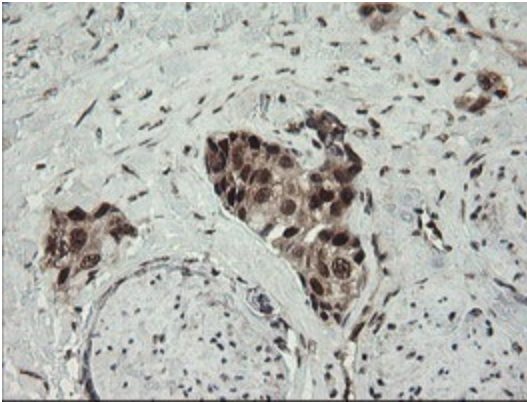
HEK293T cells were transfected with the pCMV6-ENTRY control (Cat# [PS100001], Left lane) or pCMV6-ENTRY NUMB (Cat# [RC216230], Right lane) cDNA for 48 hrs and lysed. Equivalent amounts of cell lysates (5 ug per lane) were separated by SDS-PAGE and immunoblotted with anti-NUMB(Cat# [TA502168]). Positive lysates [LY401229] (100ug) and [LC401229] (20ug) can be purchased separately from OriGene.



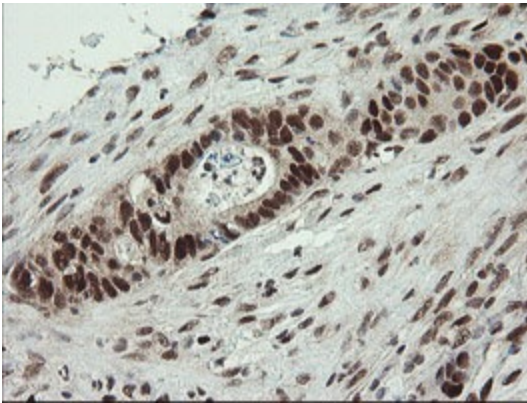
Western blot analysis of extracts (35ug) from 9 different cell lines by using anti-NUMB monoclonal antibody (HepG2: human; HeLa: human; SVT2: mouse; A549: human; COS7: monkey; Jurkat: human; MDCK: canine; PC12: rat; MCF7: human) (1:200).



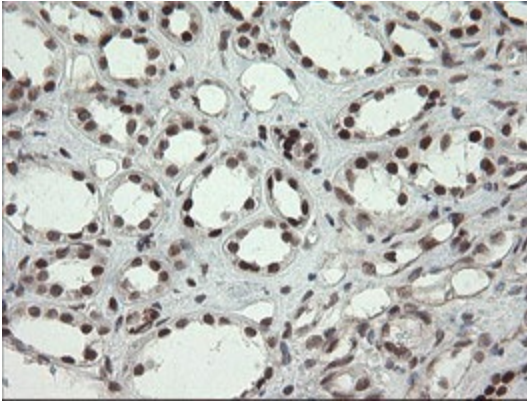
Immunohistochemical staining of paraffin-embedded Human breast tissue within the normal limits using anti-NUMB mouse monoclonal antibody. (Heat-induced epitope retrieval by 10mM citric buffer, pH6.0, 100°C for 10min, [TA502168])



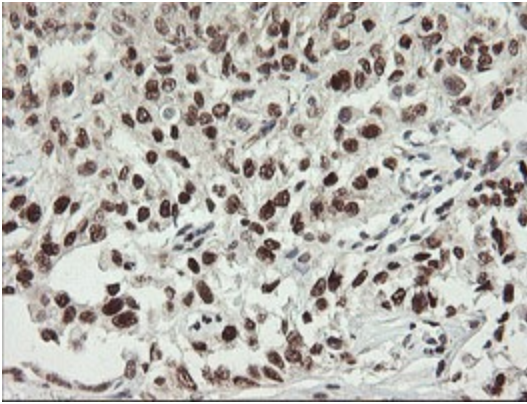
Immunohistochemical staining of paraffin-embedded Adenocarcinoma of Human breast tissue using anti-NUMB mouse monoclonal antibody. (Heat-induced epitope retrieval by 10mM citric buffer, pH6.0, 100°C for 10min, [TA502168])



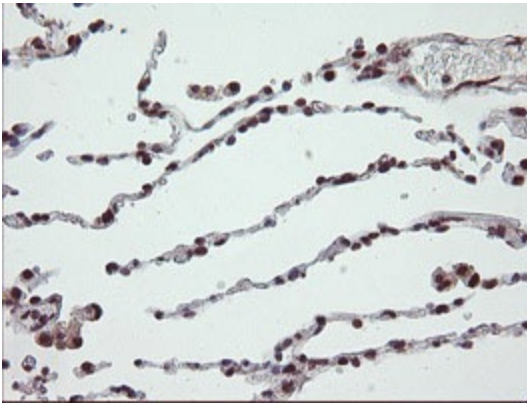
Immunohistochemical staining of paraffin-embedded Adenocarcinoma of Human colon tissue using anti-NUMB mouse monoclonal antibody. (Heat-induced epitope retrieval by 10mM citric buffer, pH6.0, 100°C for 10min, [TA502168])



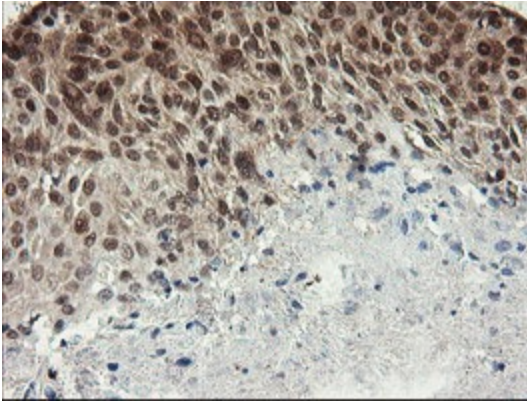
Immunohistochemical staining of paraffin-embedded Human Kidney tissue within the normal limits using anti-NUMB mouse monoclonal antibody. (Heat-induced epitope retrieval by 10mM citric buffer, pH6.0, 100°C for 10min, [TA502168])



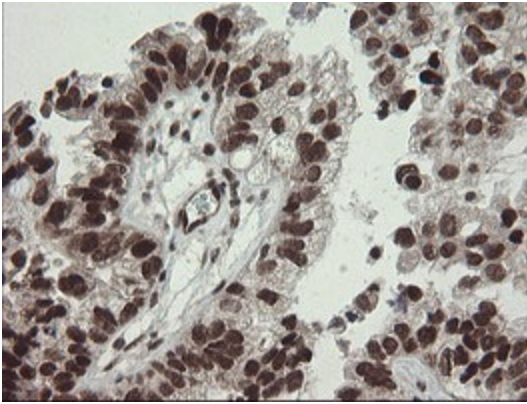
Immunohistochemical staining of paraffin-embedded Carcinoma of Human kidney tissue using anti-NUMB mouse monoclonal antibody. (Heat-induced epitope retrieval by 10mM citric buffer, pH6.0, 100°C for 10min, [TA502168])



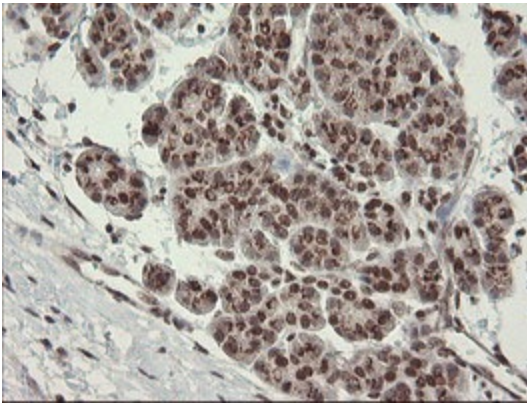
Immunohistochemical staining of paraffin-embedded Human lung tissue within the normal limits using anti-NUMB mouse monoclonal antibody. (Heat-induced epitope retrieval by 10mM citric buffer, pH6.0, 100°C for 10min, [TA502168])



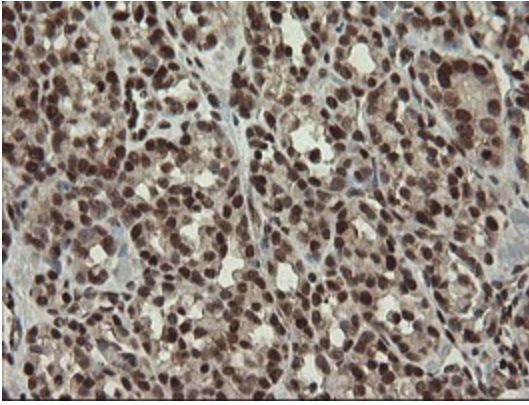
Immunohistochemical staining of paraffin-embedded Carcinoma of Human lung tissue using anti-NUMB mouse monoclonal antibody. (Heat-induced epitope retrieval by 10mM citric buffer, pH6.0, 100°C for 10min, [TA502168])



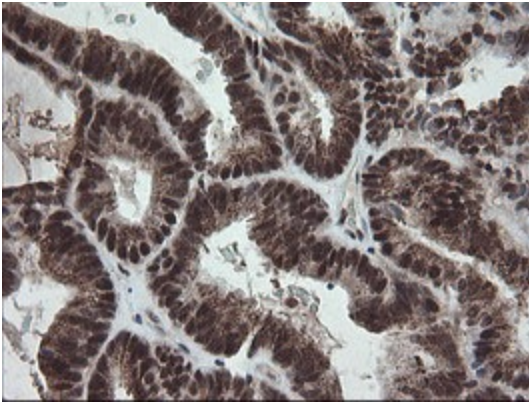
Immunohistochemical staining of paraffin-embedded Adenocarcinoma of Human ovary tissue using anti-NUMB mouse monoclonal antibody. (Heat-induced epitope retrieval by 10mM citric buffer, pH6.0, 100°C for 10min, [TA502168])



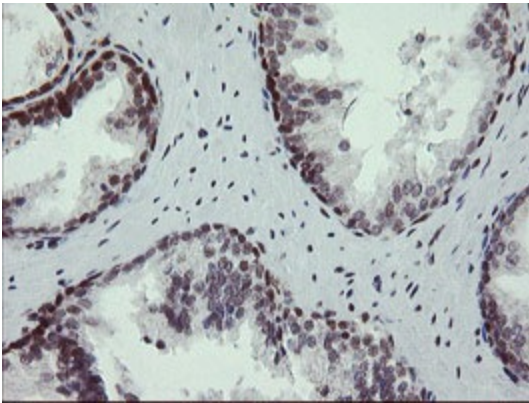
Immunohistochemical staining of paraffin-embedded Human pancreas tissue within the normal limits using anti-NUMB mouse monoclonal antibody. (Heat-induced epitope retrieval by 10mM citric buffer, pH6.0, 100°C for 10min, [TA502168])



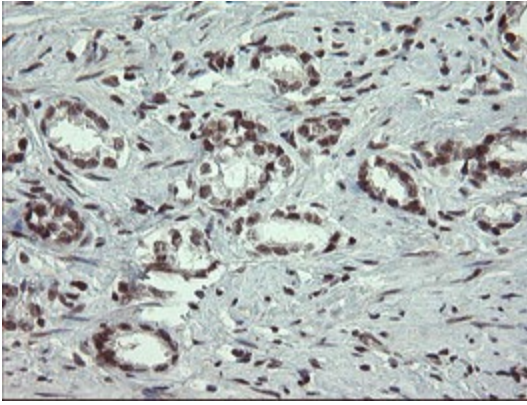
Immunohistochemical staining of paraffin-embedded Carcinoma of Human thyroid tissue using anti-NUMB mouse monoclonal antibody. (Heat-induced epitope retrieval by 10mM citric buffer, pH6.0, 100°C for 10min, [TA502168])



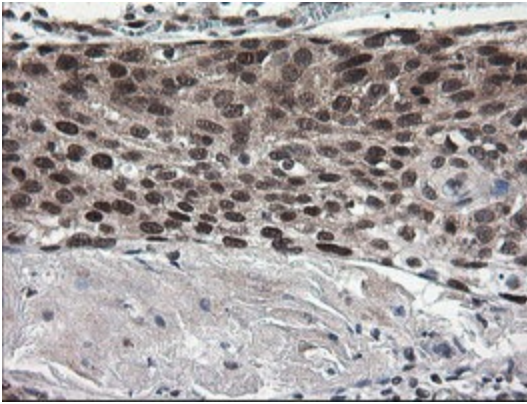
Immunohistochemical staining of paraffin-embedded Adenocarcinoma of Human endometrium tissue using anti-NUMB mouse monoclonal antibody. (Heat-induced epitope retrieval by 10mM citric buffer, pH6.0, 100°C for 10min, [TA502168])



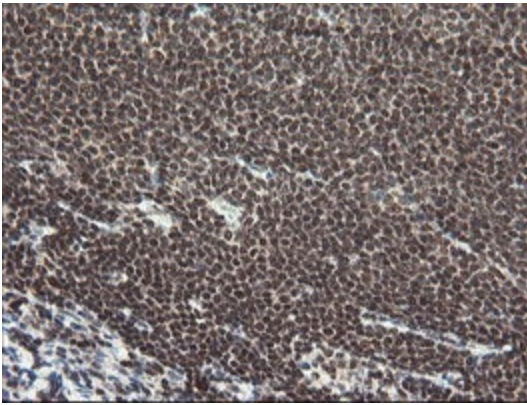
Immunohistochemical staining of paraffin-embedded Human prostate tissue within the normal limits using anti-NUMB mouse monoclonal antibody. (Heat-induced epitope retrieval by 10mM citric buffer, pH6.0, 100°C for 10min, [TA502168])



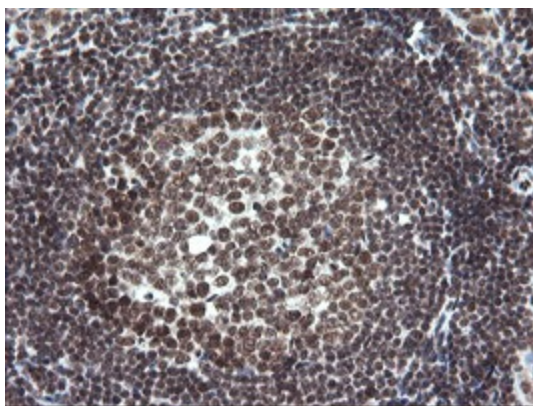
Immunohistochemical staining of paraffin-embedded Carcinoma of Human prostate tissue using anti-NUMB mouse monoclonal antibody. (Heat-induced epitope retrieval by 10mM citric buffer, pH6.0, 100°C for 10min, [TA502168])



Immunohistochemical staining of paraffin-embedded Carcinoma of Human bladder tissue using anti-NUMB mouse monoclonal antibody. (Heat-induced epitope retrieval by 10mM citric buffer, pH6.0, 100°C for 10min, [TA502168])



Immunohistochemical staining of paraffin-embedded Human Lymphoma tissue using anti-NUMB mouse monoclonal antibody. (Heat-induced epitope retrieval by 10mM citric buffer, pH6.0, 100°C for 10min, [TA502168])



Immunohistochemical staining of paraffin-embedded Human tonsil within the normal limits using anti-NUMB mouse monoclonal antibody. (Heat-induced epitope retrieval by 10mM citric buffer, pH6.0, 100°C for 10min, [TA502168])