

Product datasheet for **CF502157**

SAMHD1 Mouse Monoclonal Antibody [Clone ID: OTI1A1]

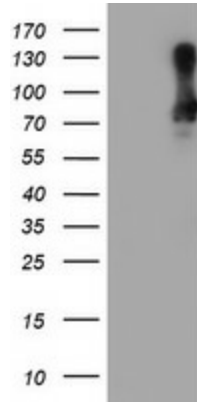
Product data:

Product Type:	Primary Antibodies
Clone Name:	OTI1A1
Applications:	FC, IF, IHC, WB
Recommend Dilution:	WB 1:500~2000, IHC 1:150, IF 1:100, FLOW 1:100
Reactivity:	Human, Monkey, Mouse, Rat, Dog
Host:	Mouse
Isotype:	IgG2b
Clonality:	Monoclonal
Immunogen:	Full length human recombinant protein of human SAMHD1(NP_056289) produced in HEK293T cell.
Formulation:	PBS (pH7.3), 8% Trehalose
Reconstitution Method:	Reconstitute with PBS (pH7.3). To use this carrier-free antibody for conjugation experiment, we strongly recommend you to perform another round of desalting process. (OriGene recommends Zeba Spin Desalting Columns, 7KMWCO from Thermo Scientific)
Purification:	Purified from cell culture supernatant by affinity chromatography
Predicted Protein Size:	72 kDa
Gene Name:	Homo sapiens SAM and HD domain containing deoxynucleoside triphosphate triphosphohydrolase 1 (SAMHD1), transcript variant 1, mRNA.
Database Link:	NP_056289 Entrez Gene 56045 MouseEntrez Gene 311580 RatEntrez Gene 485862 DogEntrez Gene 709060 MonkeyEntrez Gene 25939 Human
Background:	This gene may play a role in regulation of the innate immune response. The encoded protein is upregulated in response to viral infection and may be involved in mediation of tumor necrosis factor-alpha proinflammatory responses. Mutations in this gene have been associated with Aicardi-Goutieres syndrome. [provided by RefSeq]
Synonyms:	CHBL2; DCIP; HDDC1; MOP-5; SBBI88

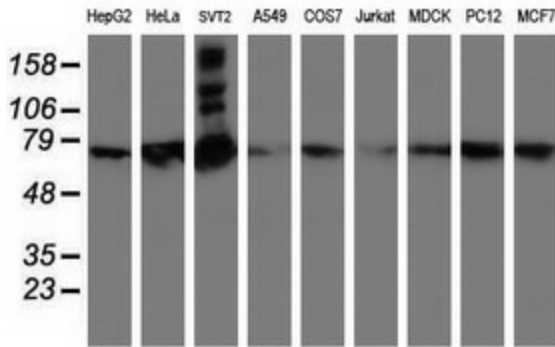


[View online »](#)

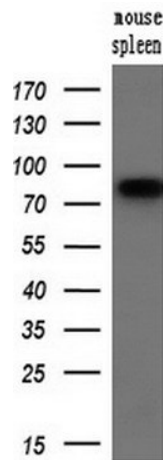
Product images:



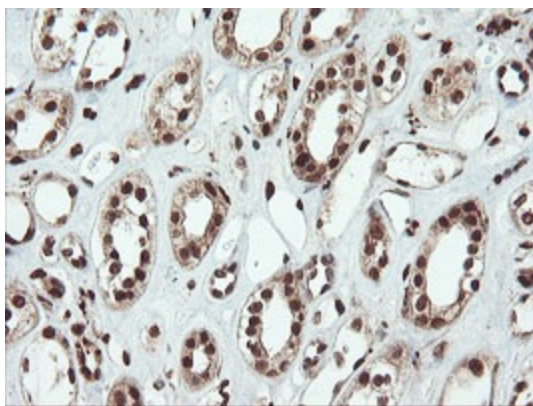
HEK293T cells were transfected with the pCMV6-ENTRY control (Left lane) or pCMV6-ENTRY SAMHD1 (RC206013, Right lane) cDNA for 48 hrs and lysed. Equivalent amounts of cell lysates (5 ug per lane) were separated by SDS-PAGE and immunoblotted with anti-SAMHD1. Positive lysates LY414526 (100ug) and LC414526 (20ug) can be purchased separately from OriGene.



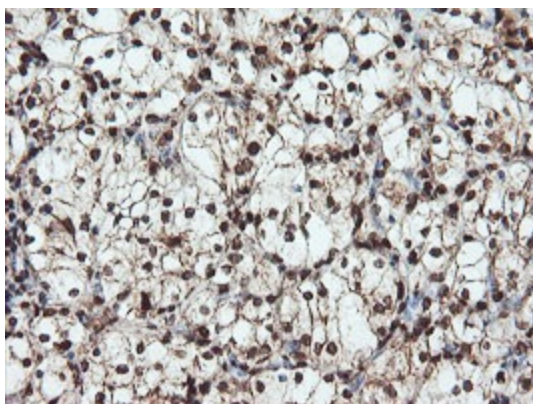
Western blot analysis of extracts (35ug) from 9 different cell lines by using anti-SAMHD1 monoclonal antibody (HepG2: human; HeLa: human; SVT2: mouse; A549: human; COS7: monkey; Jurkat: human; MDCK: canine; PC12: rat; MCF7: human).



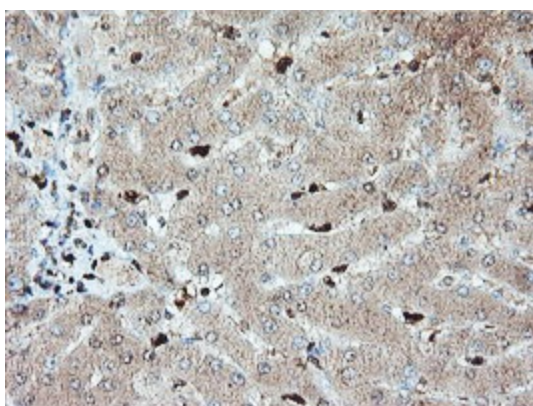
Western blot analysis of extracts (10ug) from a mouse tissue by using anti-SAMHD1 monoclonal antibody (1:200).



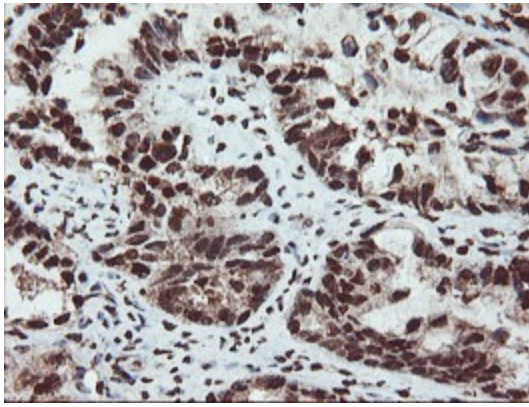
Immunohistochemical staining of paraffin-embedded Human Kidney tissue within the normal limits using anti-SAMHD1 mouse monoclonal antibody. (Heat-induced epitope retrieval by 10mM citric buffer, pH6.0, 100°C for 10min, TA502157)



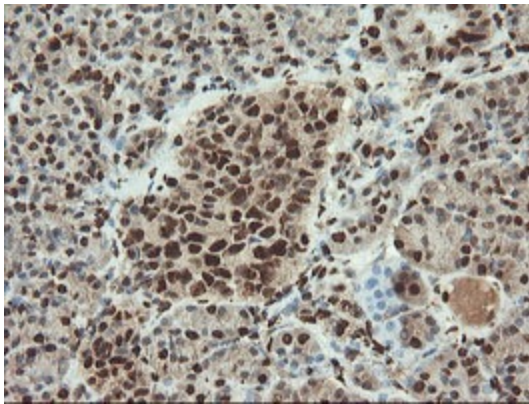
Immunohistochemical staining of paraffin-embedded Carcinoma of Human kidney tissue using anti-SAMHD1 mouse monoclonal antibody. (Heat-induced epitope retrieval by 10mM citric buffer, pH6.0, 100°C for 10min, TA502157)



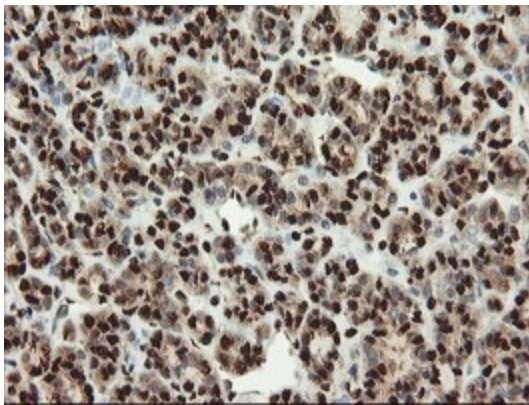
Immunohistochemical staining of paraffin-embedded Human liver tissue within the normal limits using anti-SAMHD1 mouse monoclonal antibody. (Heat-induced epitope retrieval by 10mM citric buffer, pH6.0, 100°C for 10min, TA502157)



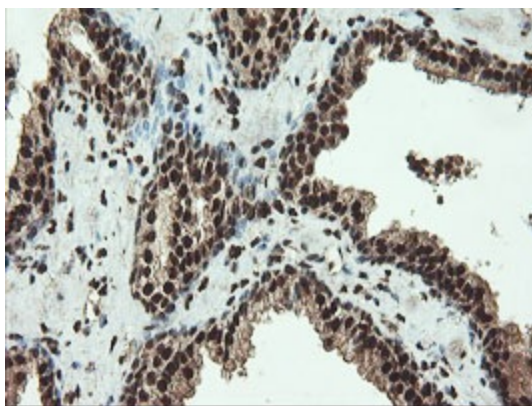
Immunohistochemical staining of paraffin-embedded Adenocarcinoma of Human ovary tissue using anti-SAMHD1 mouse monoclonal antibody. (Heat-induced epitope retrieval by 10mM citric buffer, pH6.0, 100°C for 10min, TA502157)



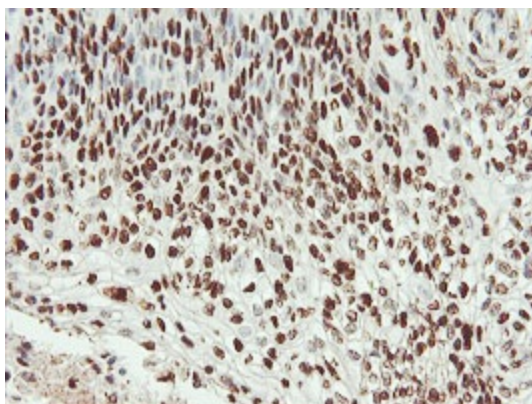
Immunohistochemical staining of paraffin-embedded Human pancreas tissue within the normal limits using anti-SAMHD1 mouse monoclonal antibody. (Heat-induced epitope retrieval by 10mM citric buffer, pH6.0, 100°C for 10min, TA502157)



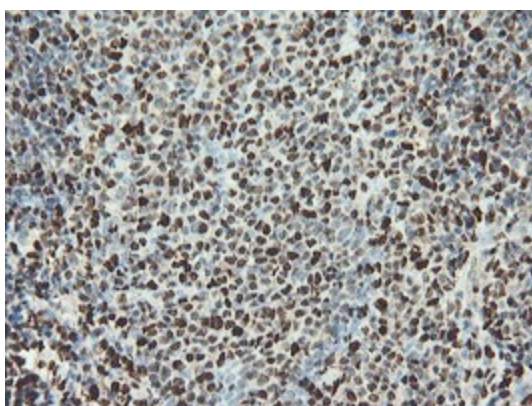
Immunohistochemical staining of paraffin-embedded Carcinoma of Human thyroid tissue using anti-SAMHD1 mouse monoclonal antibody. (Heat-induced epitope retrieval by 10mM citric buffer, pH6.0, 100°C for 10min, TA502157)



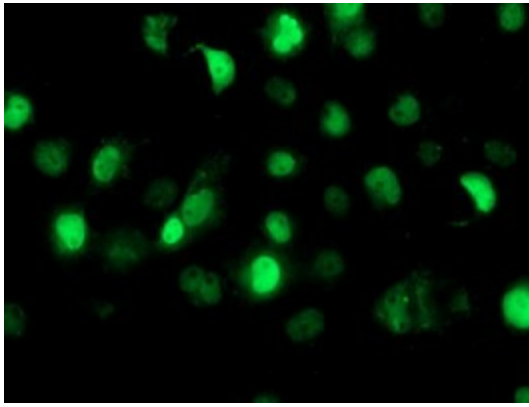
Immunohistochemical staining of paraffin-embedded Carcinoma of Human prostate tissue using anti-SAMHD1 mouse monoclonal antibody. (Heat-induced epitope retrieval by 10mM citric buffer, pH6.0, 100°C for 10min, TA502157)



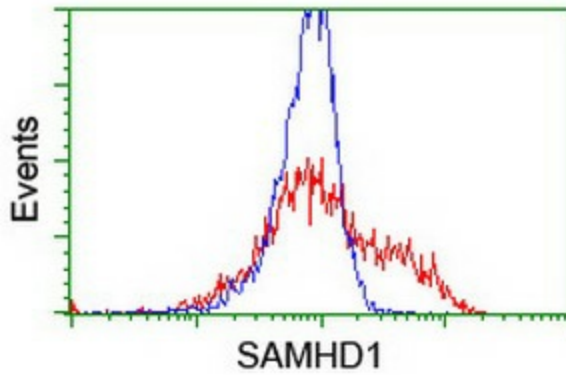
Immunohistochemical staining of paraffin-embedded Carcinoma of Human bladder tissue using anti-SAMHD1 mouse monoclonal antibody. (Heat-induced epitope retrieval by 10mM citric buffer, pH6.0, 100°C for 10min, TA502157)



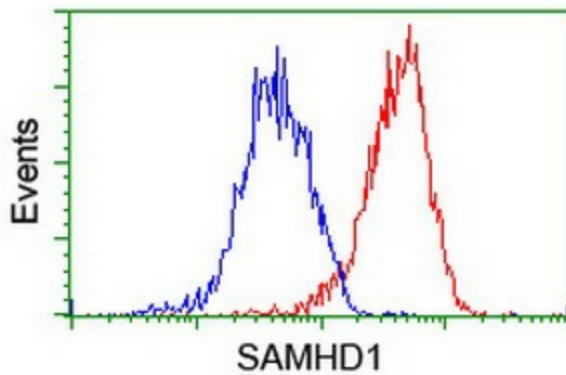
Immunohistochemical staining of paraffin-embedded Human tonsil within the normal limits using anti-SAMHD1 mouse monoclonal antibody. (Heat-induced epitope retrieval by 10mM citric buffer, pH6.0, 100°C for 10min, TA502157)



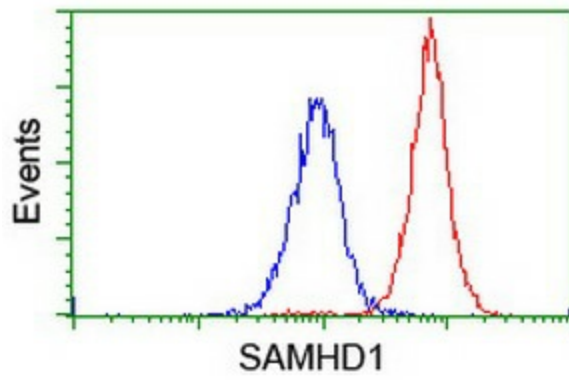
Anti-SAMHD1 mouse monoclonal antibody (TA502157) immunofluorescent staining of COS7 cells transiently transfected by pCMV6-ENTRY SAMHD1 (RC206013).



HEK293T cells transfected with either RC206013 overexpress plasmid (Red) or empty vector control plasmid (Blue) were immunostained by anti-SAMHD1 antibody (TA502157), and then analyzed by flow cytometry.



Flow cytometric Analysis of HeLa cells, using anti-SAMHD1 antibody (TA502157), (Red), compared to a nonspecific negative control antibody, (Blue).



Flow cytometric Analysis of Jurkat cells, using anti-SAMHD1 antibody (TA502157), (Red), compared to a nonspecific negative control antibody, (Blue).