

Product datasheet for **CF502147**

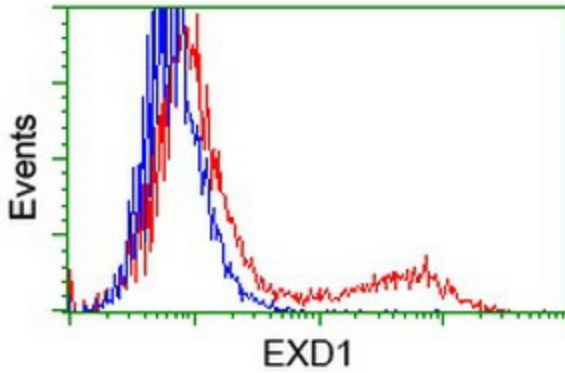
EXDL1 (EXD1) Mouse Monoclonal Antibody [Clone ID: OTI2G5]

Product data:

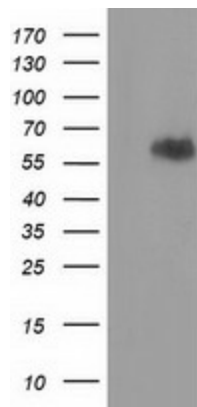
Product Type:	Primary Antibodies
Clone Name:	OTI2G5
Applications:	FC, WB
Recommended Dilution:	WB 1:200~500, FLOW 1:100
Reactivity:	Human, Rat, Monkey
Host:	Mouse
Isotype:	IgG1
Clonality:	Monoclonal
Immunogen:	Full length human recombinant protein of human EXD1 (NP_689809) produced in HEK293T cell.
Formulation:	Lyophilized powder (original buffer 1X PBS, pH 7.3, 8% trehalose)
Reconstitution Method:	For reconstitution, we recommend adding 100uL distilled water to a final antibody concentration of about 1 mg/mL. To use this carrier-free antibody for conjugation experiment, we strongly recommend performing another round of desalting process. (OriGene recommends Zeba Spin Desalting Columns, 7KMWCO from Thermo Scientific)
Purification:	Purified from mouse ascites fluids or tissue culture supernatant by affinity chromatography (protein A/G)
Conjugation:	Unconjugated
Storage:	Store at -20°C as received.
Stability:	Stable for 12 months from date of receipt.
Predicted Protein Size:	58.2 kDa
Gene Name:	exonuclease 3'-5' domain containing 1
Database Link:	NP_689809 Entrez Gene 311334 Rat Entrez Gene 705364 Monkey Entrez Gene 161829 Human Q8NHP7
Synonyms:	EXDL1



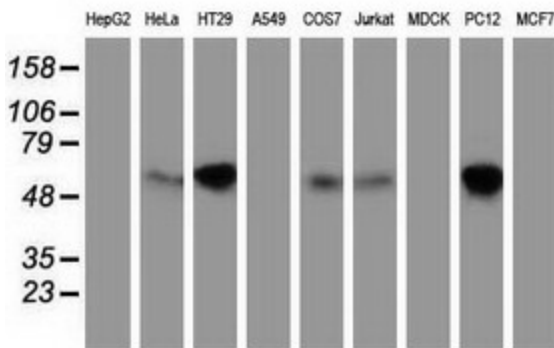
[View online »](#)

Product images:


HEK293T cells transfected with either [RC206223] overexpress plasmid (Red) or empty vector control plasmid (Blue) were immunostained by anti-EXD1 antibody ([TA502147]), and then analyzed by flow cytometry.



HEK293T cells were transfected with the pCMV6-ENTRY control (Left lane) or pCMV6-ENTRY EXD1 ([RC206223], Right lane) cDNA for 48 hrs and lysed. Equivalent amounts of cell lysates (5 ug per lane) were separated by SDS-PAGE and immunoblotted with anti-EXD1. Positive lysates [LY407402] (100ug) and [LC407402] (20ug) can be purchased separately from OriGene.



Western blot analysis of extracts (35ug) from 9 different cell lines by using anti-EXD1 monoclonal antibody.