

Product datasheet for **CF502143**

HDAC1 Mouse Monoclonal Antibody [Clone ID: OTI6F11]

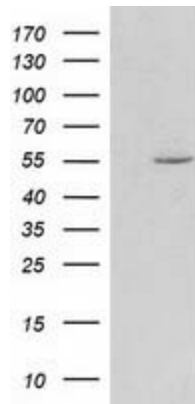
Product data:

| | |
|-------------------------|--|
| Product Type: | Primary Antibodies |
| Clone Name: | OTI6F11 |
| Applications: | FC, IF, WB |
| Recommended Dilution: | WB 1:500, IF 1:100, FLOW 1:100 |
| Reactivity: | Human, Mouse, Rat |
| Host: | Mouse |
| Isotype: | IgG1 |
| Clonality: | Monoclonal |
| Immunogen: | Full length human recombinant protein of human HDAC1 (NP_004955) produced in HEK293T cell. |
| Formulation: | Lyophilized powder (original buffer 1X PBS, pH 7.3, 8% trehalose) |
| Reconstitution Method: | For reconstitution, we recommend adding 100uL distilled water to a final antibody concentration of about 1 mg/mL. To use this carrier-free antibody for conjugation experiment, we strongly recommend performing another round of desalting process. (OriGene recommends Zeba Spin Desalting Columns, 7KMWCO from Thermo Scientific) |
| Purification: | Purified from mouse ascites fluids or tissue culture supernatant by affinity chromatography (protein A/G) |
| Conjugation: | Unconjugated |
| Storage: | Store at -20°C as received. |
| Stability: | Stable for 12 months from date of receipt. |
| Predicted Protein Size: | 54.9 kDa |
| Gene Name: | histone deacetylase 1 |
| Database Link: | NP_004955 Entrez Gene 297893 Rat Entrez Gene 433759 Mouse Entrez Gene 3065 Human Q13547 |

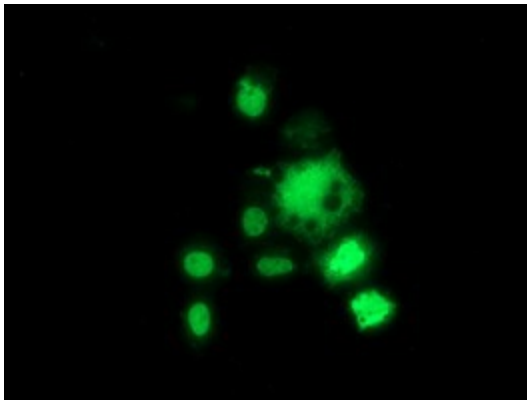


[View online »](#)

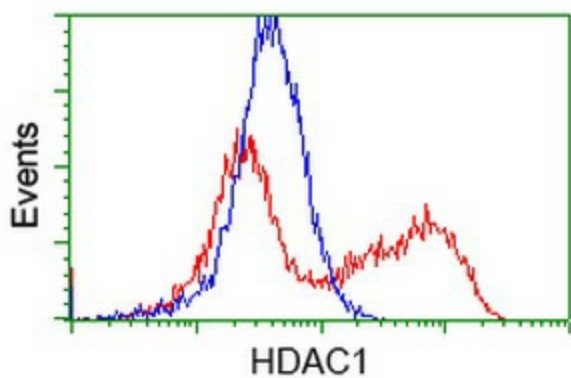
| | |
|--------------------------|--|
| Background: | Histone acetylation and deacetylation, catalyzed by multisubunit complexes, play a key role in the regulation of eukaryotic gene expression. The protein encoded by this gene belongs to the histone deacetylase/acuc/apha family and is a component of the histone deacetylase complex. It also interacts with retinoblastoma tumor-suppressor protein and this complex is a key element in the control of cell proliferation and differentiation. Together with metastasis-associated protein-2, it deacetylates p53 and modulates its effect on cell growth and apoptosis. [provided by RefSeq] |
| Synonyms: | GON-10; HD1; RPD3; RPD3L1 |
| Protein Families: | Adult stem cells, Druggable Genome, Stem cell - Pluripotency, Stem cell relevant signaling - DSL/Notch pathway, Transcription Factors |
| Protein Pathways: | Cell cycle, Chronic myeloid leukemia, Huntington's disease, Notch signaling pathway, Pathways in cancer |

Product images:

HEK293T cells were transfected with the pCMV6-ENTRY control (Left lane) or pCMV6-ENTRY HDAC1 ([RC201745], Right lane) cDNA for 48 hrs and lysed. Equivalent amounts of cell lysates (5 ug per lane) were separated by SDS-PAGE and immunoblotted with anti-HDAC1. Positive lysates [LY417624] (100ug) and [LC417624] (20ug) can be purchased separately from OriGene.



Anti-HDAC1 mouse monoclonal antibody ([TA502143]) immunofluorescent staining of COS7 cells transiently transfected by pCMV6-ENTRY HDAC1 ([RC201745]).



HEK293T cells transfected with either [RC201745] overexpress plasmid (Red) or empty vector control plasmid (Blue) were immunostained by anti-HDAC1 antibody ([TA502143]), and then analyzed by flow cytometry.