

## Product datasheet for CF502141

### GMDS Mouse Monoclonal Antibody [Clone ID: OTI2A1]

#### Product data:

Product Type:	Primary Antibodies
Clone Name:	OTI2A1
Applications:	WB
Recommended Dilution:	WB 1:2000
Reactivity:	Human, Mouse, Rat
Host:	Mouse
Isotype:	IgG2a
Clonality:	Monoclonal
Immunogen:	Full length human recombinant protein of human GMDS (NP_001491) produced in HEK293T cell.
Formulation:	Lyophilized powder (original buffer 1X PBS, pH 7.3, 8% trehalose)
Reconstitution Method:	For reconstitution, we recommend adding 100uL distilled water to a final antibody concentration of about 1 mg/mL. To use this carrier-free antibody for conjugation experiment, we strongly recommend performing another round of desalting process. (OriGene recommends Zeba Spin Desalting Columns, 7KMWCO from Thermo Scientific)
Purification:	Purified from mouse ascites fluids or tissue culture supernatant by affinity chromatography (protein A/G)
Conjugation:	Unconjugated
Storage:	Store at -20°C as received.
Stability:	Stable for 12 months from date of receipt.
Predicted Protein Size:	41.8 kDa
Gene Name:	GDP-mannose 4,6-dehydratase
Database Link:	<a href="#">NP_001491</a> <a href="#">Entrez Gene 2762 Human</a> <a href="#">O60547</a>

[View online »](#)

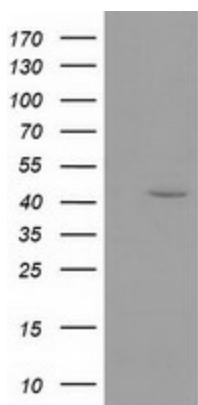
**Background:** GDP-mannose 4,6-dehydratase (GMD; EC 4.2.1.47) catalyzes the conversion of GDP-mannose to GDP-4-keto-6-deoxymannose, the first step in the synthesis of GDP-fucose from GDP-mannose, using NADP<sup>+</sup> as a cofactor. The second and third steps of the pathway are catalyzed by a single enzyme, GDP-keto-6-deoxymannose 3,5-epimerase, 4-reductase, designated FX in humans (MIM 137020). [supplied by OMIM]

**Synonyms:** GMD; SDR3E1

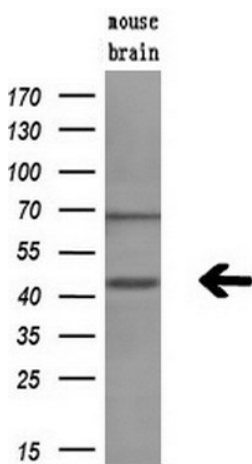
**Protein Families:** Druggable Genome

**Protein Pathways:** Amino sugar and nucleotide sugar metabolism, Fructose and mannose metabolism, Metabolic pathways

## Product images:



HEK293T cells were transfected with the pCMV6-ENTRY control (Cat# [PS100001], Left lane) or pCMV6-ENTRY GMDS (Cat# [RC200471], Right lane) cDNA for 48 hrs and lysed. Equivalent amounts of cell lysates (5 ug per lane) were separated by SDS-PAGE and immunoblotted with anti-GMDS (Cat# [TA502141]). Positive lysates [LY419903] (100ug) and [LC419903] (20ug) can be purchased separately from OriGene.



Western blot analysis of extracts (10ug) from a mouse tissue by using anti-GMDS monoclonal antibody (1:200).