

Product datasheet for **CF502136**

SNX8 Mouse Monoclonal Antibody [Clone ID: OTI4F8]

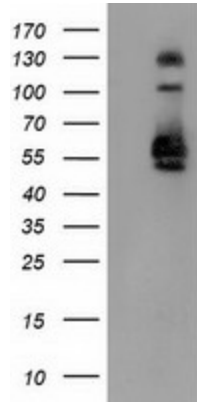
Product data:

Product Type:	Primary Antibodies
Clone Name:	OTI4F8
Applications:	FC, IF, IHC, WB
Recommended Dilution:	WB 1:500~2000, IHC 1:150, IF 1:100, FLOW 1:100
Reactivity:	Human, Mouse, Rat
Host:	Mouse
Isotype:	IgG2b
Clonality:	Monoclonal
Immunogen:	Full length human recombinant protein of human SNX8 (NP_037453) produced in HEK293T cell.
Formulation:	Lyophilized powder (original buffer 1X PBS, pH 7.3, 8% trehalose)
Reconstitution Method:	For reconstitution, we recommend adding 100uL distilled water to a final antibody concentration of about 1 mg/mL. To use this carrier-free antibody for conjugation experiment, we strongly recommend performing another round of desalting process. (OriGene recommends Zeba Spin Desalting Columns, 7KMWCO from Thermo Scientific)
Purification:	Purified from mouse ascites fluids or tissue culture supernatant by affinity chromatography (protein A/G)
Storage:	Store at -20°C as received.
Stability:	Stable for 12 months from date of receipt.
Predicted Protein Size:	52.4 kDa
Gene Name:	Homo sapiens sorting nexin 8 (SNX8), mRNA.
Database Link:	NP_037453 Entrez Gene 29886 Human
Synonyms:	Mvp1

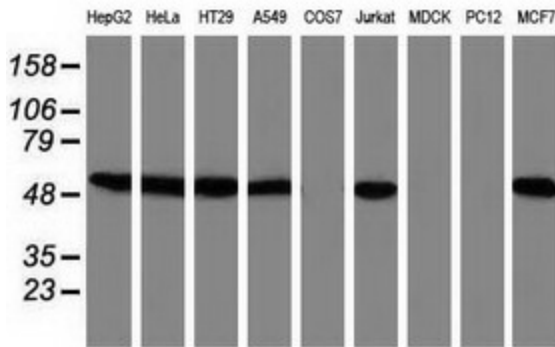


[View online »](#)

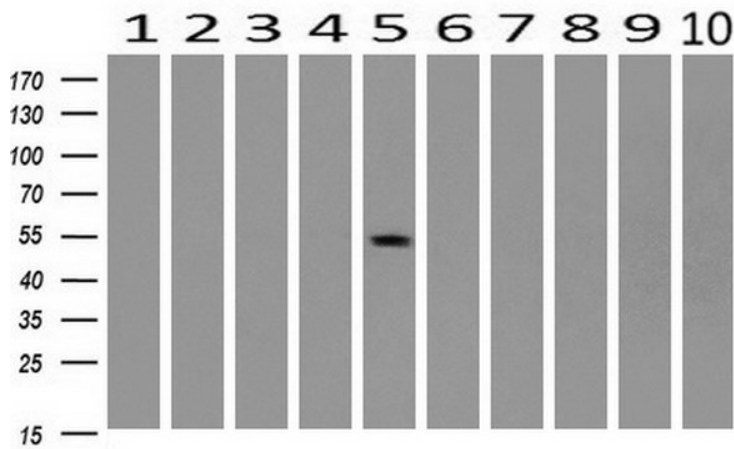
Product images:



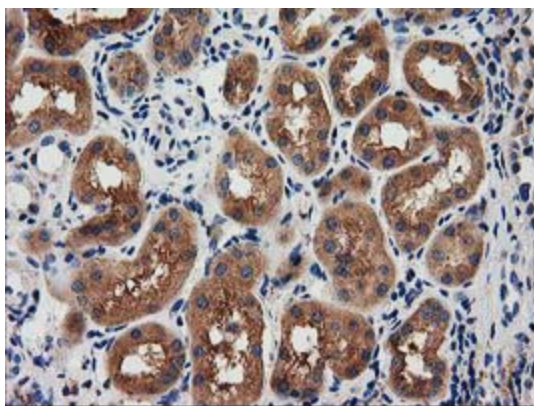
HEK293T cells were transfected with the pCMV6-ENTRY control (Left lane) or pCMV6-ENTRY SNX8 ([RC205847], Right lane) cDNA for 48 hrs and lysed. Equivalent amounts of cell lysates (5 ug per lane) were separated by SDS-PAGE and immunoblotted with anti-SNX8. Positive lysates [LY402251] (100ug) and [LC402251] (20ug) can be purchased separately from OriGene.



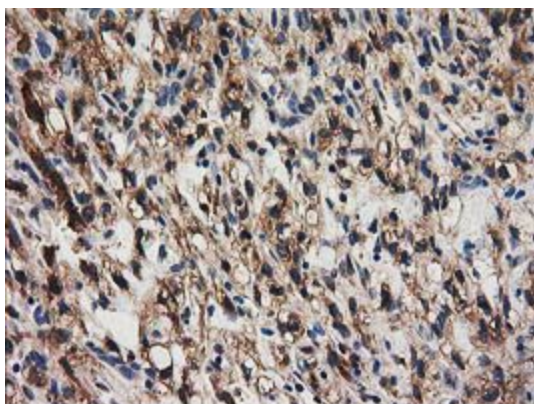
Western blot analysis of extracts (35ug) from 9 different cell lines by using anti-SNX8 monoclonal antibody.



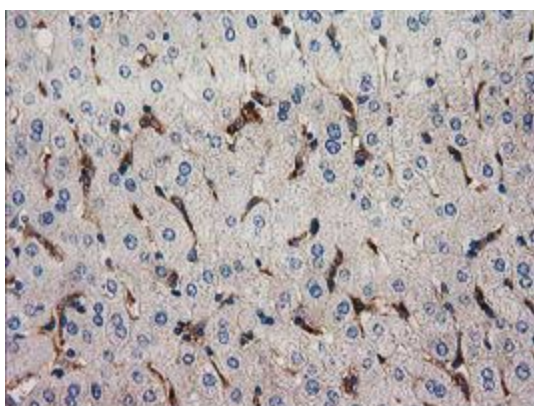
Western blot analysis of extracts (10ug) from 10 Human tissue by using anti-SNX8 monoclonal antibody at 1:200 (1: Testis; 2: Omentum; 3: Uterus; 4: Breast; 5: Brain; 6: Liver; 7: Ovary; 8: Thyroid gland; 9: colon; 10: spleen).



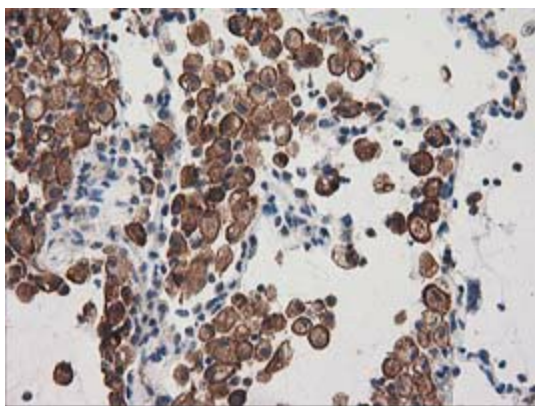
Immunohistochemical staining of paraffin-embedded Human Kidney tissue within the normal limits using anti-SNX8 mouse monoclonal antibody. (Heat-induced epitope retrieval by 10mM citric buffer, pH6.0, 100°C for 10min, [TA502136])



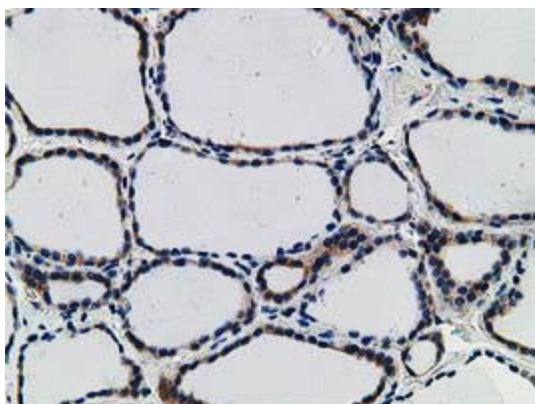
Immunohistochemical staining of paraffin-embedded Carcinoma of Human kidney tissue using anti-SNX8 mouse monoclonal antibody. (Heat-induced epitope retrieval by 10mM citric buffer, pH6.0, 100°C for 10min, [TA502136])



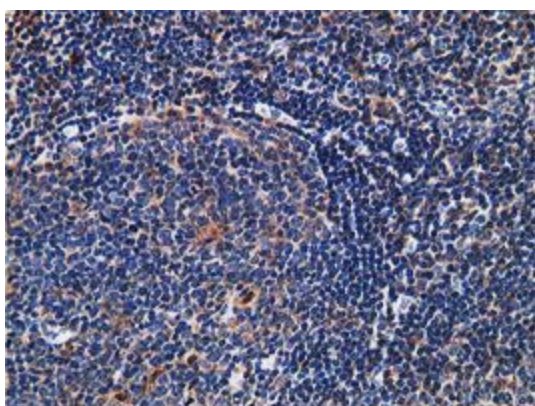
Immunohistochemical staining of paraffin-embedded Human liver tissue within the normal limits using anti-SNX8 mouse monoclonal antibody. (Heat-induced epitope retrieval by 10mM citric buffer, pH6.0, 100°C for 10min, [TA502136])



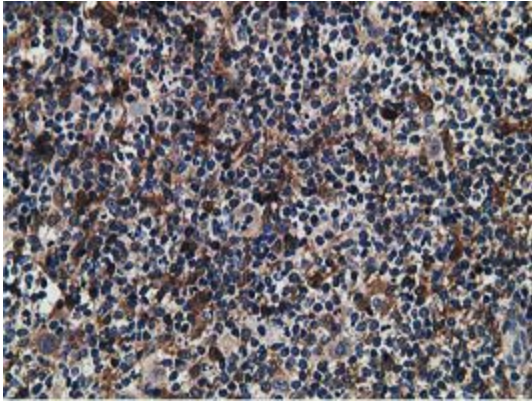
Immunohistochemical staining of paraffin-embedded Carcinoma of Human lung tissue using anti-SNX8 mouse monoclonal antibody. (Heat-induced epitope retrieval by 10mM citric buffer, pH6.0, 100°C for 10min, [TA502136])



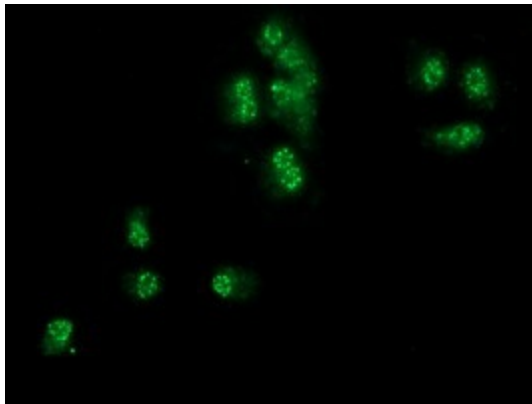
Immunohistochemical staining of paraffin-embedded Human thyroid tissue within the normal limits using anti-SNX8 mouse monoclonal antibody. (Heat-induced epitope retrieval by 10mM citric buffer, pH6.0, 100°C for 10min, [TA502136])



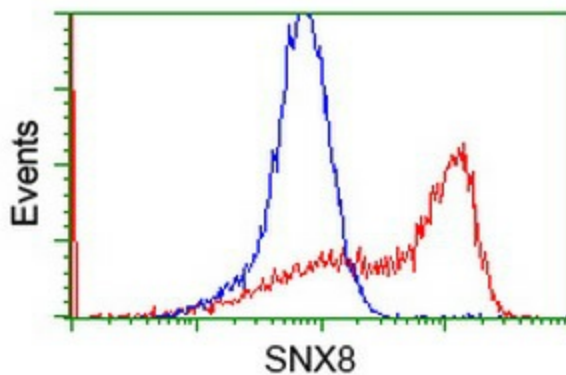
Immunohistochemical staining of paraffin-embedded Human lymph node tissue within the normal limits using anti-SNX8 mouse monoclonal antibody. (Heat-induced epitope retrieval by 10mM citric buffer, pH6.0, 100°C for 10min, [TA502136])



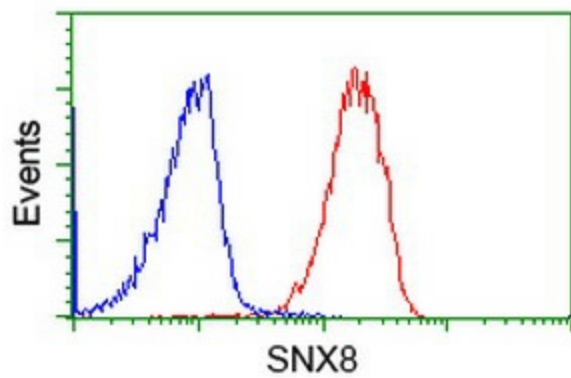
Immunohistochemical staining of paraffin-embedded Human lymphoma tissue using anti-SNX8 mouse monoclonal antibody. (Heat-induced epitope retrieval by 10mM citric buffer, pH6.0, 100°C for 10min, [TA502136])



Anti-SNX8 mouse monoclonal antibody ([TA502136]) immunofluorescent staining of COS7 cells transiently transfected by pCMV6-ENTRY SNX8 ([RC205847]).



HEK293T cells transfected with either [RC205847] overexpress plasmid (Red) or empty vector control plasmid (Blue) were immunostained by anti-SNX8 antibody ([TA502136]), and then analyzed by flow cytometry.



Flow cytometric Analysis of Jurkat cells, using anti-SNX8 antibody ([TA502136]), (Red), compared to a nonspecific negative control antibody ([TA50011]), (Blue).