

## Product datasheet for **CF502121**

### **PYCR3 Mouse Monoclonal Antibody [Clone ID: OT15F7]**

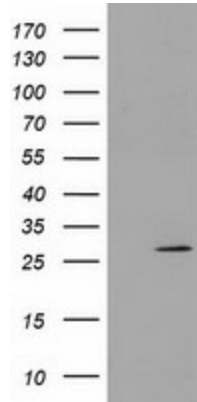
#### **Product data:**

<b>Product Type:</b>	Primary Antibodies
<b>Clone Name:</b>	OT15F7
<b>Applications:</b>	FC, IF, WB
<b>Recommended Dilution:</b>	WB 1:500, IF 1:100, FLOW 1:100
<b>Reactivity:</b>	Human
<b>Host:</b>	Mouse
<b>Isotype:</b>	IgG2a
<b>Clonality:</b>	Monoclonal
<b>Immunogen:</b>	Full length human recombinant protein of human PYCRL (NP_075566) produced in HEK293T cell.
<b>Formulation:</b>	Lyophilized powder (original buffer 1X PBS, pH 7.3, 8% trehalose)
<b>Reconstitution Method:</b>	For reconstitution, we recommend adding 100uL distilled water to a final antibody concentration of about 1 mg/mL. To use this carrier-free antibody for conjugation experiment, we strongly recommend performing another round of desalting process. (OriGene recommends Zeba Spin Desalting Columns, 7KMWCO from Thermo Scientific)
<b>Purification:</b>	Purified from mouse ascites fluids or tissue culture supernatant by affinity chromatography (protein A/G)
<b>Conjugation:</b>	Unconjugated
<b>Storage:</b>	Store at -20°C as received.
<b>Stability:</b>	Stable for 12 months from date of receipt.
<b>Predicted Protein Size:</b>	28.5 kDa
<b>Gene Name:</b>	pyrroline-5-carboxylate reductase 3
<b>Database Link:</b>	<a href="#">NP_075566</a> <a href="#">Entrez Gene 65263 Human</a> <a href="#">Q53H96</a>
<b>Synonyms:</b>	PYCR3
<b>Protein Pathways:</b>	Arginine and proline metabolism, Metabolic pathways

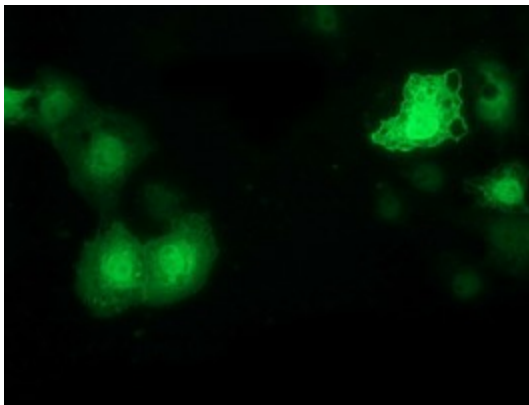


[View online »](#)

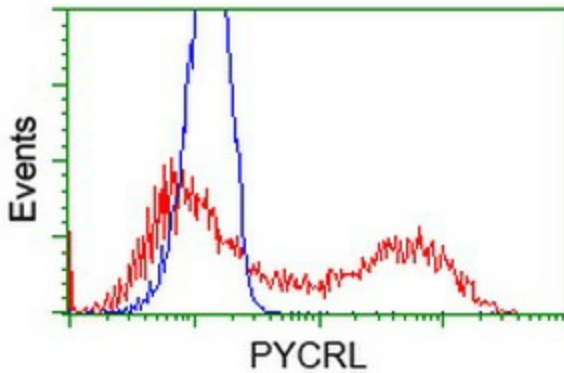
**Product images:**



HEK293T cells were transfected with the pCMV6-ENTRY control (Left lane) or pCMV6-ENTRY PYCRL ([RC229141], Right lane) cDNA for 48 hrs and lysed. Equivalent amounts of cell lysates (5 ug per lane) were separated by SDS-PAGE and immunoblotted with anti-PYCRL. Positive lysates [LY411510] (100ug) and [LC411510] (20ug) can be purchased separately from OriGene.



Anti-PYCRL mouse monoclonal antibody ([TA502121]) immunofluorescent staining of COS7 cells transiently transfected by pCMV6-ENTRY PYCRL ([RC203382]).



HEK293T cells transfected with either [RC203382] overexpress plasmid (Red) or empty vector control plasmid (Blue) were immunostained by anti-PYCRL antibody ([TA502121]), and then analyzed by flow cytometry.