

Product datasheet for **CF502089**

GRHPR Mouse Monoclonal Antibody [Clone ID: OTI4H2]

Product data:

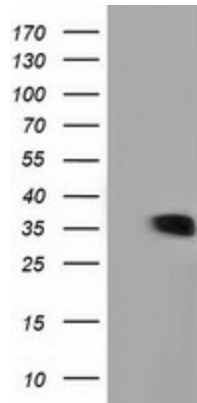
Product Type:	Primary Antibodies
Clone Name:	OTI4H2
Applications:	FC, WB
Recommended Dilution:	WB 1:1000~2000, FLOW 1:100
Reactivity:	Human, Mouse, Rat
Host:	Mouse
Isotype:	IgG2b
Clonality:	Monoclonal
Immunogen:	Full length human recombinant protein of human GRHPR (NP_036335) produced in HEK293T cell.
Formulation:	Lyophilized powder (original buffer 1X PBS, pH 7.3, 8% trehalose)
Reconstitution Method:	For reconstitution, we recommend adding 100uL distilled water to a final antibody concentration of about 1 mg/mL. To use this carrier-free antibody for conjugation experiment, we strongly recommend performing another round of desalting process. (OriGene recommends Zeba Spin Desalting Columns, 7KMWCO from Thermo Scientific)
Purification:	Purified from mouse ascites fluids or tissue culture supernatant by affinity chromatography (protein A/G)
Conjugation:	Unconjugated
Storage:	Store at -20°C as received.
Stability:	Stable for 12 months from date of receipt.
Predicted Protein Size:	35.5 kDa
Gene Name:	glyoxylate and hydroxypyruvate reductase
Database Link:	NP_036335 Entrez Gene 680021 Rat Entrez Gene 9380 Human Q9UBQ7
Synonyms:	GLXR; GLYD; PH2
Protein Families:	Druggable Genome



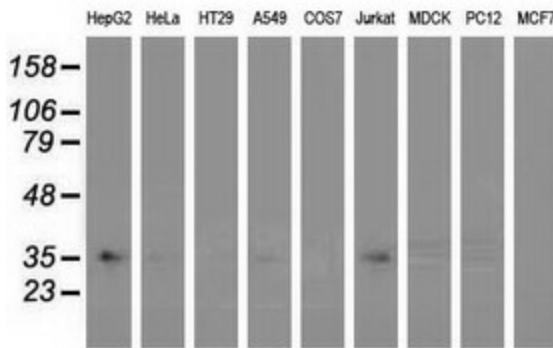
[View online »](#)

Protein Pathways: Glyoxylate and dicarboxylate metabolism, Metabolic pathways, Pyruvate metabolism

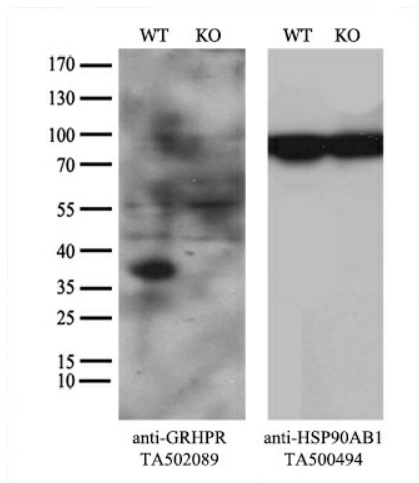
Product images:



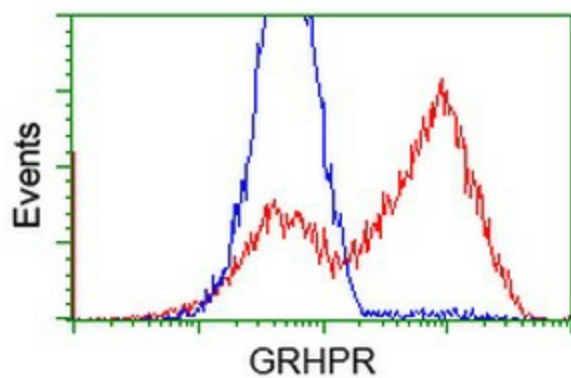
HEK293T cells were transfected with the pCMV6-ENTRY control (Left lane) or pCMV6-ENTRY GRHPR ([RC200963], Right lane) cDNA for 48 hrs and lysed. Equivalent amounts of cell lysates (5 ug per lane) were separated by SDS-PAGE and immunoblotted with anti-GRHPR. Positive lysates [LY415912] (100ug) and [LC415912] (20ug) can be purchased separately from OriGene.



Western blot analysis of extracts (35ug) from 9 different cell lines by using anti-GRHPR monoclonal antibody.



Equivalent amounts of cell lysates (10 ug per lane) of wild-type 293T cells (WT, Cat# LC810293T) and GRHPR-Knockout 293T cells (KO, Cat# [LC841943]) were separated by SDS-PAGE and immunoblotted with anti-GRHPR monoclonal antibody [TA502089] (1:200 `). Then the blotted membrane was stripped and reprobbed with anti-HSP90 antibody as a loading control.



HEK293T cells transfected with either [RC200963] overexpress plasmid (Red) or empty vector control plasmid (Blue) were immunostained by anti-GRHPR antibody ([TA502089]), and then analyzed by flow cytometry.