

## Product datasheet for **CF502065**

### CLPP Mouse Monoclonal Antibody [Clone ID: OTI1E2]

#### Product data:

Product Type:	Primary Antibodies
Clone Name:	OTI1E2
Applications:	FC, IHC, WB
Recommended Dilution:	WB 1:500~2000, IHC 1:150, FLOW 1:100
Reactivity:	Human, Dog, Monkey, Mouse, Rat
Host:	Mouse
Isotype:	IgG1
Clonality:	Monoclonal
Immunogen:	Full length human recombinant protein of human CLPP (NP_006003) produced in HEK293T cell.
Formulation:	Lyophilized powder (original buffer 1X PBS, pH 7.3, 8% trehalose)
Reconstitution Method:	For reconstitution, we recommend adding 100uL distilled water to a final antibody concentration of about 1 mg/mL. To use this carrier-free antibody for conjugation experiment, we strongly recommend performing another round of desalting process. (OriGene recommends Zeba Spin Desalting Columns, 7KMWCO from Thermo Scientific)
Purification:	Purified from mouse ascites fluids or tissue culture supernatant by affinity chromatography (protein A/G)
Conjugation:	Unconjugated
Storage:	Store at -20°C as received.
Stability:	Stable for 12 months from date of receipt.
Predicted Protein Size:	24.1 kDa
Gene Name:	caseinolytic mitochondrial matrix peptidase proteolytic subunit
Database Link:	<a href="#">NP_006003</a> <a href="#">Entrez Gene 301117 Rat</a> <a href="#">Entrez Gene 611738 Dog</a> <a href="#">Entrez Gene 699593 Monkey</a> <a href="#">Entrez Gene 8192 Human</a> <a href="#">Q16740</a>



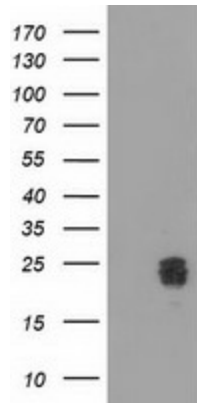
[View online »](#)

**Background:** The protein encoded by this gene belongs to the peptidase family S14 and hydrolyzes proteins into small peptides in the presence of ATP and magnesium. The protein is transported into mitochondrial matrix and is associated with the inner mitochondrial membrane. [provided by RefSeq, Jul 2008]

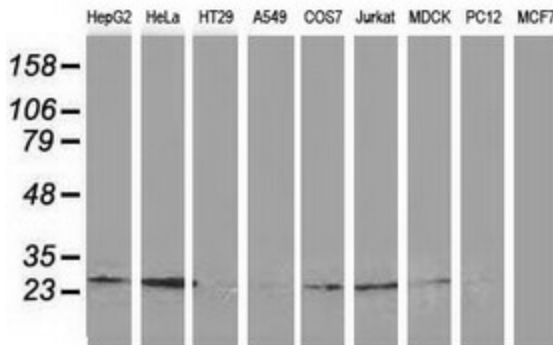
**Synonyms:** DFNB81; PRLTS3

**Protein Families:** Druggable Genome, Protease

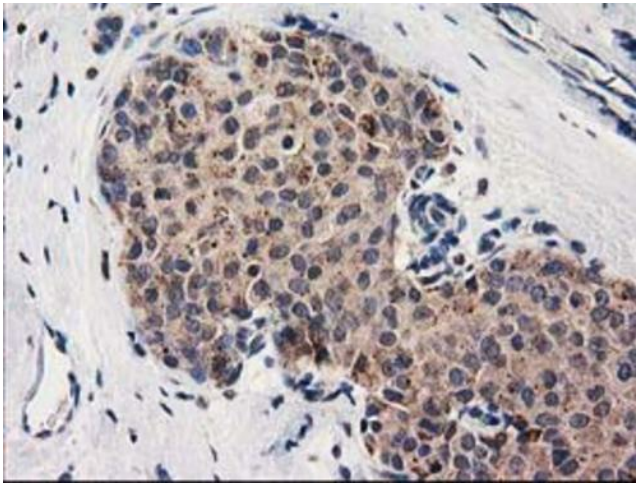
**Product images:**



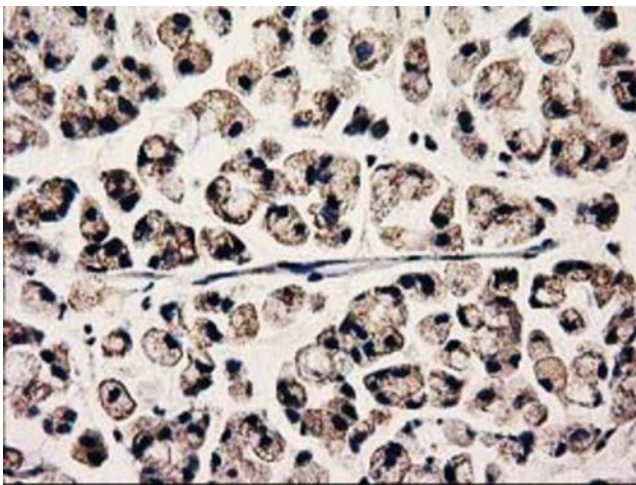
HEK293T cells were transfected with the pCMV6-ENTRY control (Left lane) or pCMV6-ENTRY CLPP ([RC200301], Right lane) cDNA for 48 hrs and lysed. Equivalent amounts of cell lysates (5 ug per lane) were separated by SDS-PAGE and immunoblotted with anti-CLPP. Positive lysates [LY416925] (100ug) and [LC416925] (20ug) can be purchased separately from OriGene.



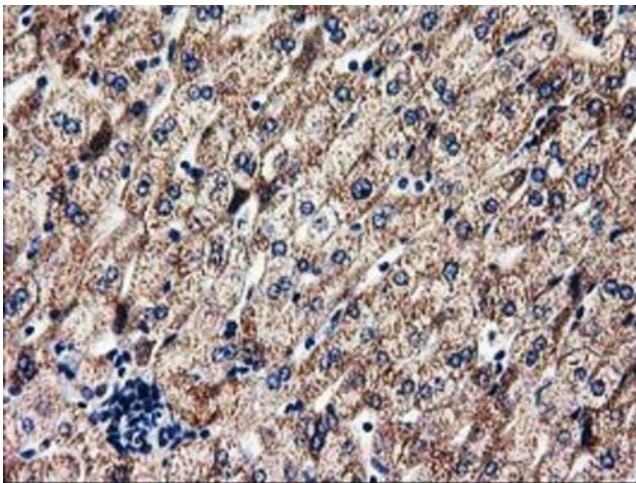
Western blot analysis of extracts (35ug) from 9 different cell lines by using anti-CLPP monoclonal antibody (HepG2: human; HeLa: human; SVT2: mouse; A549: human; COS7: monkey; Jurkat: human; MDCK: canine; PC12: rat; MCF7: human).



Immunohistochemical staining of paraffin-embedded Adenocarcinoma of Human breast tissue using anti-CLPP mouse monoclonal antibody. (Heat-induced epitope retrieval by 10mM citric buffer, pH6.0, 100°C for 10min, [TA502065])

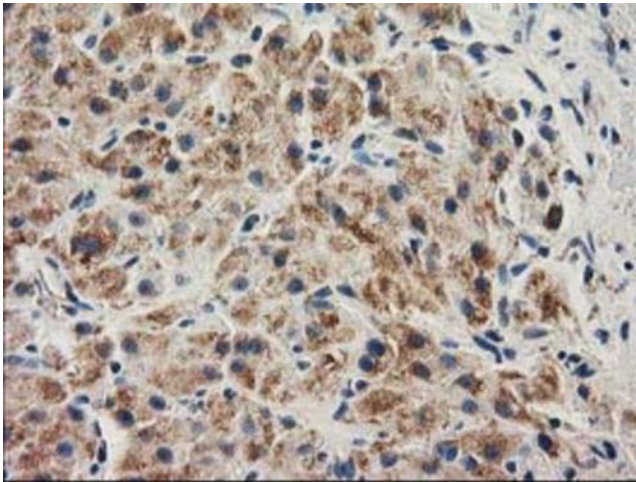


Immunohistochemical staining of paraffin-embedded Adenocarcinoma of Human colon tissue using anti-CLPP mouse monoclonal antibody. (Heat-induced epitope retrieval by 10mM citric buffer, pH6.0, 100°C for 10min, [TA502065])

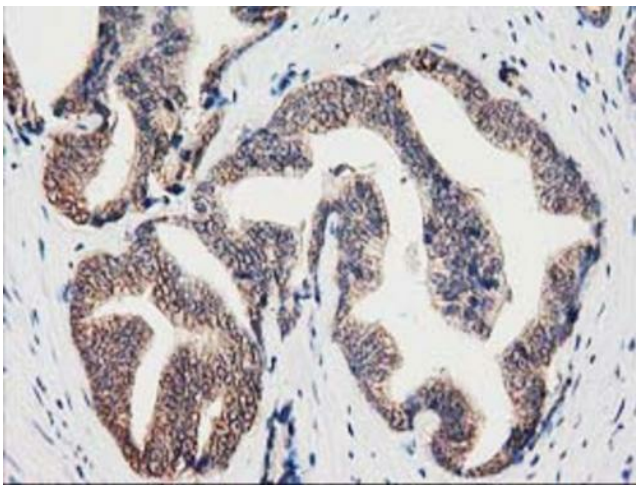


Immunohistochemical staining of paraffin-embedded Human liver tissue within the normal limits using anti-CLPP mouse monoclonal antibody. (Heat-induced epitope retrieval by 10mM citric buffer, pH6.0, 100°C for 10min, [TA502065])

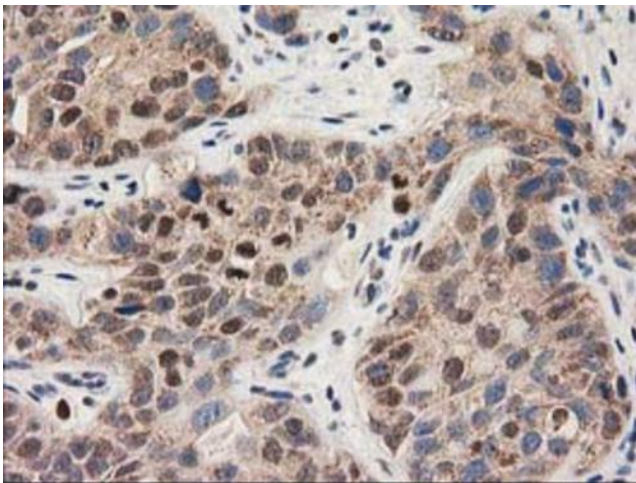




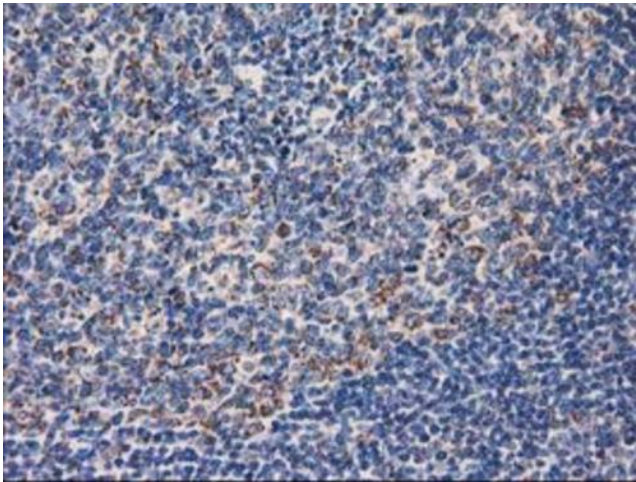
Immunohistochemical staining of paraffin-embedded Human Ovary tissue within the normal limits using anti-CLPP mouse monoclonal antibody. (Heat-induced epitope retrieval by 10mM citric buffer, pH6.0, 100°C for 10min, [TA502065])



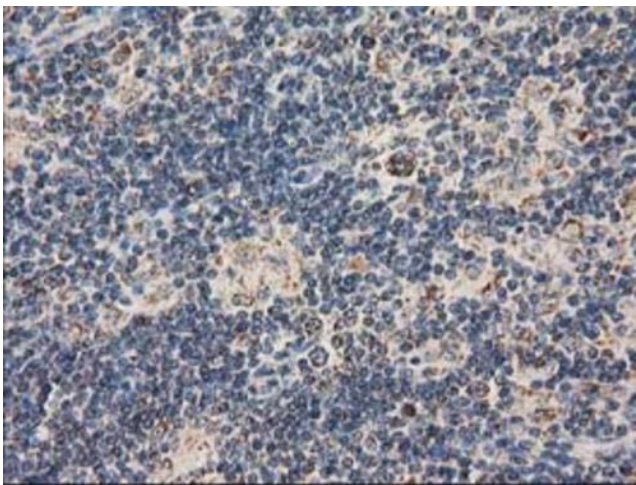
Immunohistochemical staining of paraffin-embedded Carcinoma of Human prostate tissue using anti-CLPP mouse monoclonal antibody. (Heat-induced epitope retrieval by 10mM citric buffer, pH6.0, 100°C for 10min, [TA502065])



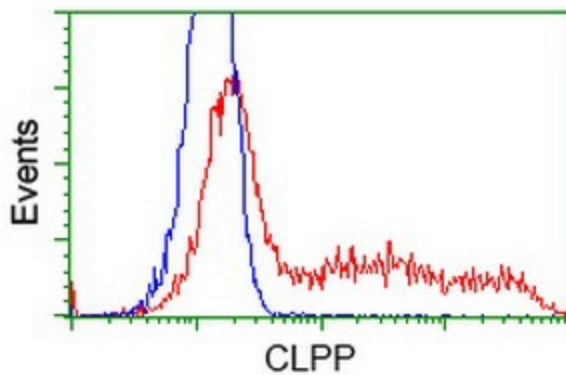
Immunohistochemical staining of paraffin-embedded Carcinoma of Human bladder tissue using anti-CLPP mouse monoclonal antibody. (Heat-induced epitope retrieval by 10mM citric buffer, pH6.0, 100°C for 10min, [TA502065])



Immunohistochemical staining of paraffin-embedded Human lymph node tissue within the normal limits using anti-CLPP mouse monoclonal antibody. (Heat-induced epitope retrieval by 10mM citric buffer, pH6.0, 100°C for 10min, [TA502065])



Immunohistochemical staining of paraffin-embedded Human lymphoma tissue using anti-CLPP mouse monoclonal antibody. (Heat-induced epitope retrieval by 10mM citric buffer, pH6.0, 100°C for 10min, [TA502065])



HEK293T cells transfected with either [RC200301] overexpress plasmid (Red) or empty vector control plasmid (Blue) were immunostained by anti-CLPP antibody ([TA502065]), and then analyzed by flow cytometry.