

Product datasheet for **CF501953**

SAMHD1 Mouse Monoclonal Antibody [Clone ID: OTI1F6]

Product data:

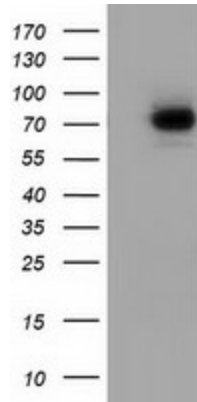
Product Type:	Primary Antibodies
Clone Name:	OTI1F6
Applications:	FC, IF, WB
Recommended Dilution:	WB 1:500~2000, IF 1:100, FLOW 1:100
Reactivity:	Human, Monkey
Host:	Mouse
Isotype:	IgG1
Clonality:	Monoclonal
Immunogen:	Full length human recombinant protein of human SAMHD1 (NP_056289) produced in HEK293T cell.
Formulation:	Lyophilized powder (original buffer 1X PBS, pH 7.3, 8% trehalose)
Reconstitution Method:	For reconstitution, we recommend adding 100uL distilled water to a final antibody concentration of about 1 mg/mL. To use this carrier-free antibody for conjugation experiment, we strongly recommend performing another round of desalting process. (OriGene recommends Zeba Spin Desalting Columns, 7KMWCO from Thermo Scientific)
Purification:	Purified from mouse ascites fluids or tissue culture supernatant by affinity chromatography (protein A/G)
Storage:	Store at -20°C as received.
Stability:	Stable for 12 months from date of receipt.
Predicted Protein Size:	72.0 kDa
Gene Name:	Homo sapiens SAM and HD domain containing deoxynucleoside triphosphate triphosphohydrolase 1 (SAMHD1), transcript variant 1, mRNA.
Database Link:	NP_056289 Entrez Gene 709060 Monkey Entrez Gene 25939 Human
Background:	This gene may play a role in regulation of the innate immune response. The encoded protein is upregulated in response to viral infection and may be involved in mediation of tumor necrosis factor-alpha proinflammatory responses. Mutations in this gene have been associated with Aicardi-Goutieres syndrome. [provided by RefSeq]. COMPLETENESS: complete on the 3' end.



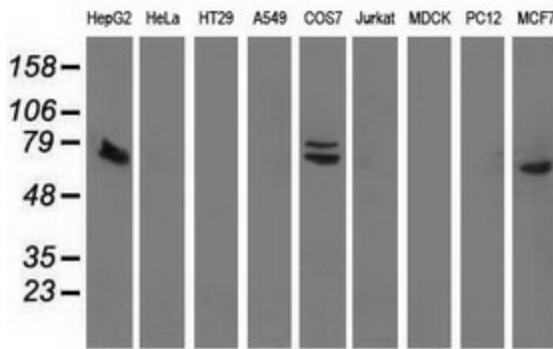
[View online »](#)

Synonyms: CHBL2; DCIP; HDDC1; MOP-5; SBBI88

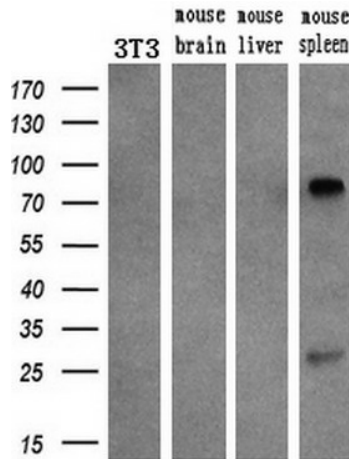
Product images:



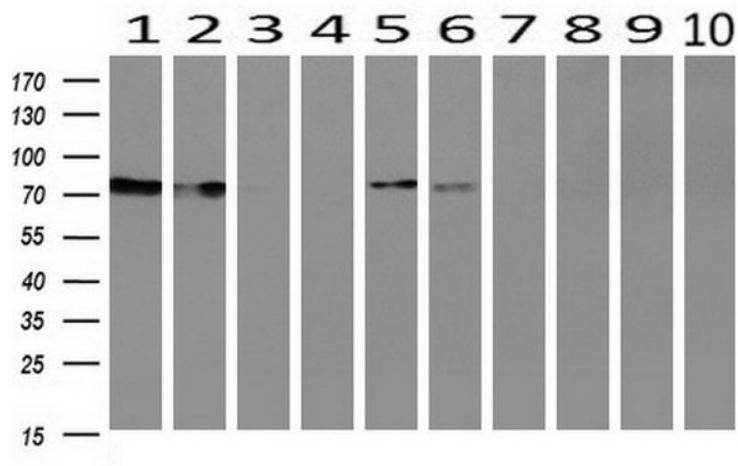
HEK293T cells were transfected with the pCMV6-ENTRY control (Left lane) or pCMV6-ENTRY SAMHD1 ([RC206013], Right lane) cDNA for 48 hrs and lysed. Equivalent amounts of cell lysates (5 ug per lane) were separated by SDS-PAGE and immunoblotted with anti-SAMHD1. Positive lysates [LY414526] (100ug) and [LC414526] (20ug) can be purchased separately from OriGene.



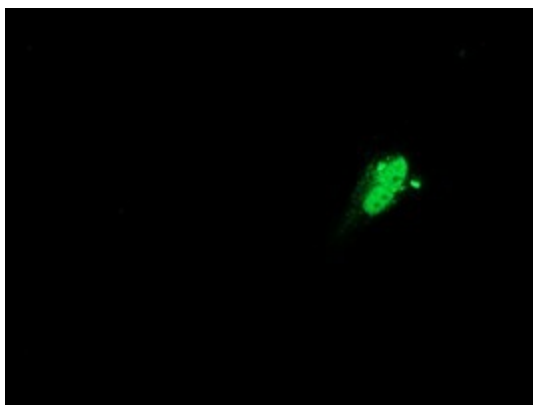
Western blot analysis of extracts (35ug) from 9 different cell lines by using anti-SAMHD1 monoclonal antibody.



Western blot analysis of extracts (10ug) from a mouse cell line and 3 different mouse tissues by using anti-SAMHD1 monoclonal antibody (1:200).



Western blot analysis of extracts (10ug) from 10 Human tissue by using anti-SAMHD1 monoclonal antibody at 1:200 (1: Testis; 2: Omentum; 3: Uterus; 4: Breast; 5: Brain; 6: Liver; 7: Ovary; 8: Thyroid gland; 9: colon;10: spleen).



Anti-SAMHD1 mouse monoclonal antibody ([TA501953]) immunofluorescent staining of COS7 cells transiently transfected by pCMV6-ENTRY SAMHD1 ([RC206013]).

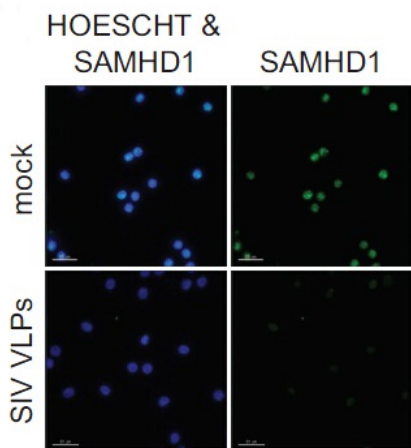
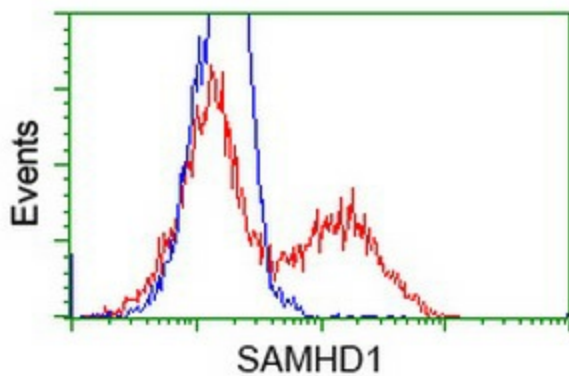
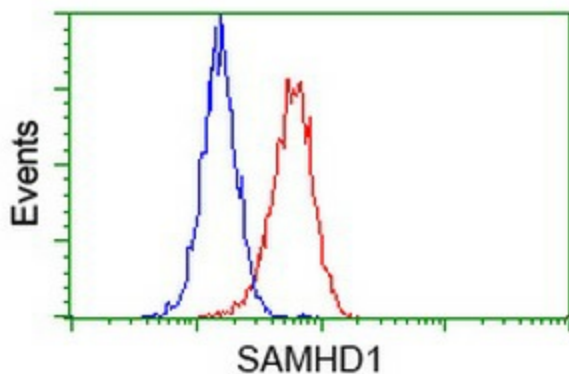


Figure from citation: Immunofluorescence of SAMHD1 protein level by using anti-SAMHD1 antibody in human CD4+ T cells. [View Citation](#)



HEK293T cells transfected with either [RC206013] overexpress plasmid (Red) or empty vector control plasmid (Blue) were immunostained by anti-SAMHD1 antibody ([TA501953]), and then analyzed by flow cytometry.



Flow cytometric Analysis of HeLa cells, using anti-SAMHD1 antibody ([TA501953]), (Red), compared to a nonspecific negative control antibody ([TA50011]), (Blue).