

Product datasheet for **CF501950**

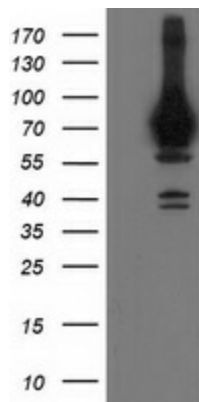
HSPA6 Mouse Monoclonal Antibody [Clone ID: OT1D12]

Product data:

| | |
|-------------------------|--|
| Product Type: | Primary Antibodies |
| Clone Name: | OT1D12 |
| Applications: | WB |
| Recommended Dilution: | WB 1:2000, IF 1:100 |
| Reactivity: | Human |
| Host: | Mouse |
| Isotype: | IgG1 |
| Clonality: | Monoclonal |
| Immunogen: | Full length human recombinant protein of human HSPA6 (NP_002146) produced in HEK293T cell. |
| Formulation: | Lyophilized powder (original buffer 1X PBS, pH 7.3, 8% trehalose) |
| Reconstitution Method: | For reconstitution, we recommend adding 100uL distilled water to a final antibody concentration of about 1 mg/mL. To use this carrier-free antibody for conjugation experiment, we strongly recommend performing another round of desalting process. (OriGene recommends Zeba Spin Desalting Columns, 7KMWCO from Thermo Scientific) |
| Purification: | Purified from mouse ascites fluids or tissue culture supernatant by affinity chromatography (protein A/G) |
| Conjugation: | Unconjugated |
| Storage: | Store at -20°C as received. |
| Stability: | Stable for 12 months from date of receipt. |
| Predicted Protein Size: | 70.8 kDa |
| Gene Name: | heat shock protein family A (Hsp70) member 6 |
| Database Link: | NP_002146 Entrez Gene 3310 Human P17066 |
| Synonyms: | heat shock 70kDa protein 6 (HSP70B'); heat shock 70kD protein 6 (HSP70B') |
| Protein Pathways: | Antigen processing and presentation, Endocytosis, MAPK signaling pathway, Spliceosome |



[View online »](#)

Product images:

HEK293T cells were transfected with the pCMV6-ENTRY control (Cat# [PS100001], Left lane) or pCMV6-ENTRY HSPA6 (Cat# [RC207795], Right lane) cDNA for 48 hrs and lysed. Equivalent amounts of cell lysates (5 ug per lane) were separated by SDS-PAGE and immunoblotted with anti-HSPA6 (Cat# [TA501950]). Positive lysates [LY419498] (100ug) and [LC419498] (20ug) can be purchased separately from OriGene.