

## Product datasheet for **CF501947**

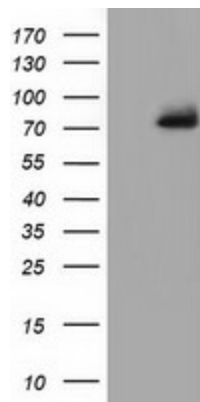
### PPWD1 Mouse Monoclonal Antibody [Clone ID: OTI1B8]

#### Product data:

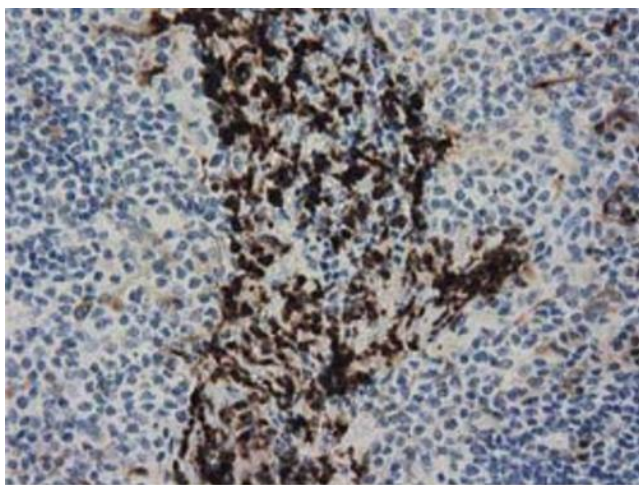
Product Type:	Primary Antibodies
Clone Name:	OTI1B8
Applications:	FC, IF, IHC, WB
Recommended Dilution:	WB 1:200~500, IF 1:100, FLOW 1:100, IHC: 1:150
Reactivity:	Human, Mouse, Rat
Host:	Mouse
Isotype:	IgG1
Clonality:	Monoclonal
Immunogen:	Full length human recombinant protein of human PPWD1 (NP_056157) produced in HEK293T cell.
Formulation:	Lyophilized powder (original buffer 1X PBS, pH 7.3, 8% trehalose)
Reconstitution Method:	For reconstitution, we recommend adding 100uL distilled water to a final antibody concentration of about 1 mg/mL. To use this carrier-free antibody for conjugation experiment, we strongly recommend performing another round of desalting process. (OriGene recommends Zeba Spin Desalting Columns, 7KMWCO from Thermo Scientific)
Purification:	Purified from mouse ascites fluids or tissue culture supernatant by affinity chromatography (protein A/G)
Conjugation:	Unconjugated
Storage:	Store at -20°C as received.
Stability:	Stable for 12 months from date of receipt.
Predicted Protein Size:	73.4 kDa
Gene Name:	peptidylprolyl isomerase domain and WD repeat containing 1
Database Link:	<a href="#">NP_056157</a> <a href="#">Entrez Gene 238831</a> <a href="#">MouseEntrez Gene 294711</a> <a href="#">RatEntrez Gene 23398</a> <a href="#">Human Q96BP3</a>
Synonyms:	KIAA0073



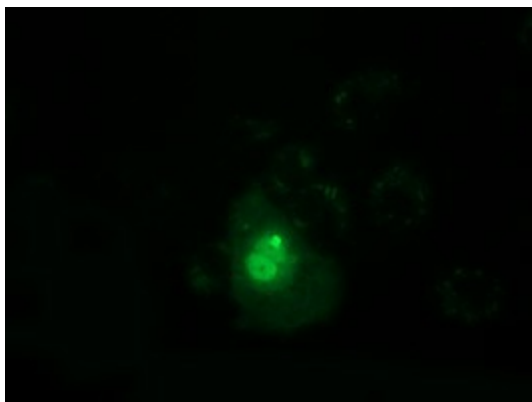
[View online »](#)

**Product images:**

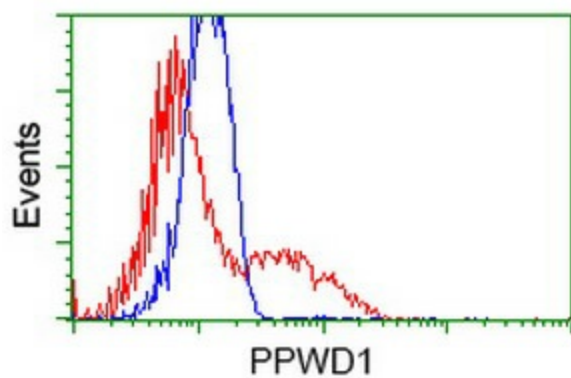
HEK293T cells were transfected with the pCMV6-ENTRY control (Left lane) or pCMV6-ENTRY PPWD1 ([RC204570], Right lane) cDNA for 48 hrs and lysed. Equivalent amounts of cell lysates (5 ug per lane) were separated by SDS-PAGE and immunoblotted with anti-PPWD1. Positive lysates [LY414604] (100ug) and [LC414604] (20ug) can be purchased separately from OriGene.



Immunohistochemical staining of paraffin-embedded Human lymph node tissue within the normal limits using anti-PPWD1 mouse monoclonal antibody. ([TA501947]). Heat-induced epitope retrieval by EDTA solution buffer pH 8.0 at 120°C for 3 min.



Anti-PPWD1 mouse monoclonal antibody ([TA501947]) immunofluorescent staining of COS7 cells transiently transfected by pCMV6-ENTRY PPWD1 ([RC204570]).



HEK293T cells transfected with either [RC204570] overexpress plasmid (Red) or empty vector control plasmid (Blue) were immunostained by anti-PPWD1 antibody ([TA501947]), and then analyzed by flow cytometry.