

Product datasheet for **CF501942**

OTUB2 Mouse Monoclonal Antibody [Clone ID: OTI6F7]

Product data:

Product Type:	Primary Antibodies
Clone Name:	OTI6F7
Applications:	FC, IF, WB
Recommended Dilution:	WB 1:2000, IF 1:100, FLOW 1:100
Reactivity:	Human, Mouse, Rat
Host:	Mouse
Isotype:	IgG1
Clonality:	Monoclonal
Immunogen:	Full length human recombinant protein of human OTUB2 (NP_075601) produced in HEK293T cell.
Formulation:	Lyophilized powder (original buffer 1X PBS, pH 7.3, 8% trehalose)
Reconstitution Method:	For reconstitution, we recommend adding 100uL distilled water to a final antibody concentration of about 1 mg/mL. To use this carrier-free antibody for conjugation experiment, we strongly recommend performing another round of desalting process. (OriGene recommends Zeba Spin Desalting Columns, 7KMWCO from Thermo Scientific)
Purification:	Purified from mouse ascites fluids or tissue culture supernatant by affinity chromatography (protein A/G)
Conjugation:	Unconjugated
Storage:	Store at -20°C as received.
Stability:	Stable for 12 months from date of receipt.
Predicted Protein Size:	27.0 kDa
Gene Name:	OTU deubiquitinase, ubiquitin aldehyde binding 2
Database Link:	NP_075601 Entrez Gene 68149 Mouse Entrez Gene 314405 Rat Entrez Gene 78990 Human Q96DC9
Background:	Otubains are deubiquitylating cysteine proteases (DUBs; see MIM 602519) that belong to the ovarian tumor (OTU) protein superfamily. Like other DUBs, otubains cleave proteins precisely at the ubiquitin (UB; see MIM 191339)-protein bond. [supplied by OMIM]

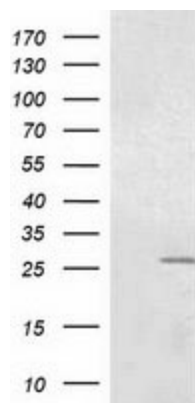


[View online »](#)

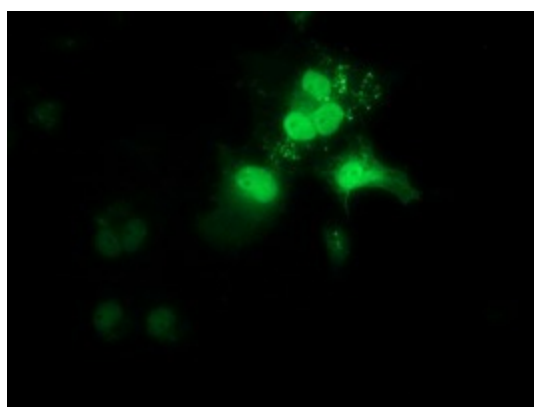
Synonyms: C14orf137; OTB2; OTU2

Protein Families: Protease

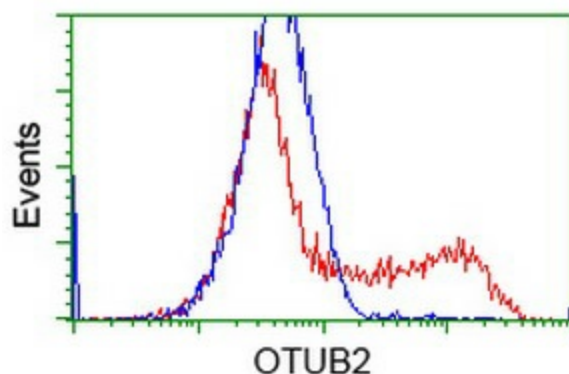
Product images:



HEK293T cells were transfected with the pCMV6-ENTRY control (Left lane) or pCMV6-ENTRY OTUB2 ([RC209650], Right lane) cDNA for 48 hrs and lysed. Equivalent amounts of cell lysates (5 ug per lane) were separated by SDS-PAGE and immunoblotted with anti-OTUB2. Positive lysates [LY402958] (100ug) and [LC402958] (20ug) can be purchased separately from OriGene.



Anti-OTUB2 mouse monoclonal antibody ([TA501942]) immunofluorescent staining of COS7 cells transiently transfected by pCMV6-ENTRY OTUB2 ([RC209650]).



HEK293T cells transfected with either [RC209650] overexpress plasmid (Red) or empty vector control plasmid (Blue) were immunostained by anti-OTUB2 antibody ([TA501942]), and then analyzed by flow cytometry.