

Product datasheet for **CF501930**

EPM2AIP1 Mouse Monoclonal Antibody [Clone ID: OTI1F11]

Product data:

Product Type:	Primary Antibodies
Clone Name:	OTI1F11
Applications:	FC, IF, IHC, WB
Recommended Dilution:	WB; 1:500-1:2000, IF: 1:100, Flow: 1:100, IHC: 1:50-1:150
Reactivity:	Human, Mouse, Rat
Host:	Mouse
Isotype:	IgG2a
Clonality:	Monoclonal
Immunogen:	Full length human recombinant protein of human EPM2AIP1 (NP_055620) produced in HEK293T cell.
Formulation:	Lyophilized powder (original buffer 1X PBS, pH 7.3, 8% trehalose)
Reconstitution Method:	For reconstitution, we recommend adding 100uL distilled water to a final antibody concentration of about 1 mg/mL. To use this carrier-free antibody for conjugation experiment, we strongly recommend performing another round of desalting process. (OriGene recommends Zeba Spin Desalting Columns, 7KMWCO from Thermo Scientific)
Purification:	Purified from mouse ascites fluids or tissue culture supernatant by affinity chromatography (protein A/G)
Conjugation:	Unconjugated
Storage:	Store at -20°C as received.
Stability:	Stable for 12 months from date of receipt.
Predicted Protein Size:	70.2 kDa
Gene Name:	EPM2A interacting protein 1
Database Link:	NP_055620 Entrez Gene 77781 Mouse Entrez Gene 316021 Rat Entrez Gene 9852 Human Q7L775

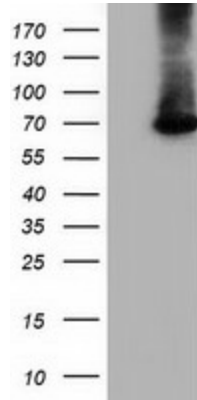


[View online »](#)

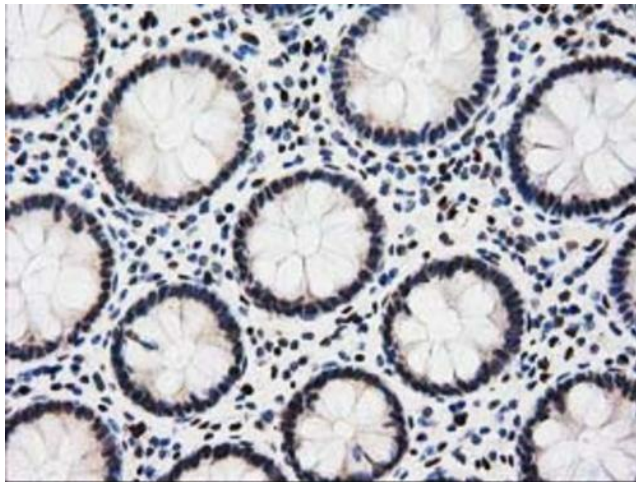
Background: The EPM2A gene, which encodes laforin, is mutated in an autosomal recessive form of adolescent progressive myoclonus epilepsy. The protein encoded by this gene binds to laforin, but its function is not known. This gene is intronless. [provided by RefSeq].
COMPLETENESS: complete on the 3' end.

Synonyms: FLJ11207; KIAA0766

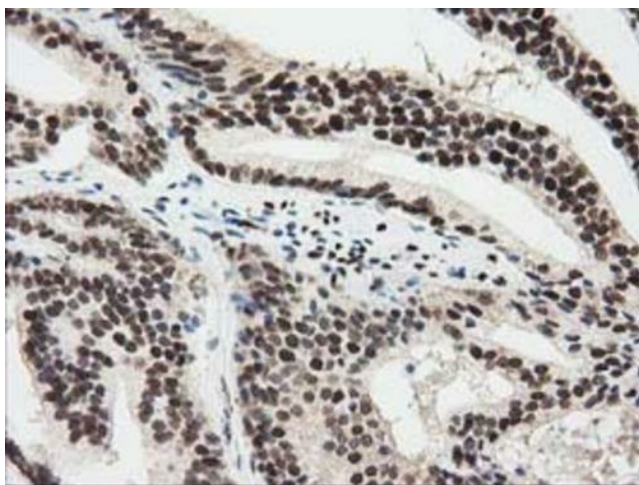
Product images:



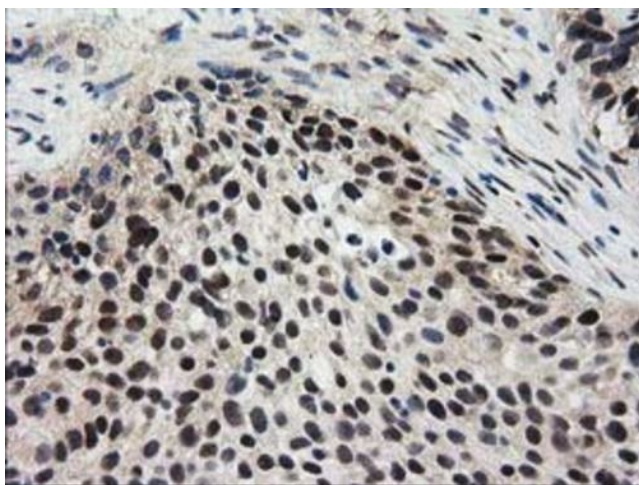
HEK293T cells were transfected with the pCMV6-ENTRY control (Left lane) or pCMV6-ENTRY EPM2AIP1 ([RC209239], Right lane) cDNA for 48 hrs and lysed. Equivalent amounts of cell lysates (5 ug per lane) were separated by SDS-PAGE and immunoblotted with anti-EPM2AIP1. Positive lysates [LY415014] (100ug) and [LC415014] (20ug) can be purchased separately from OriGene.



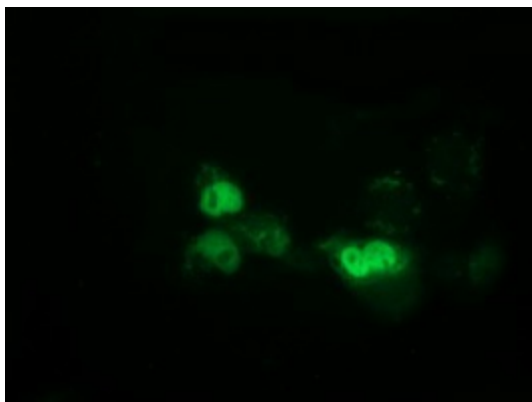
Immunohistochemical staining of paraffin-embedded Human colon tissue within the normal limits using anti-EPM2AIP1 mouse monoclonal antibody at 1:150 ([TA501930])



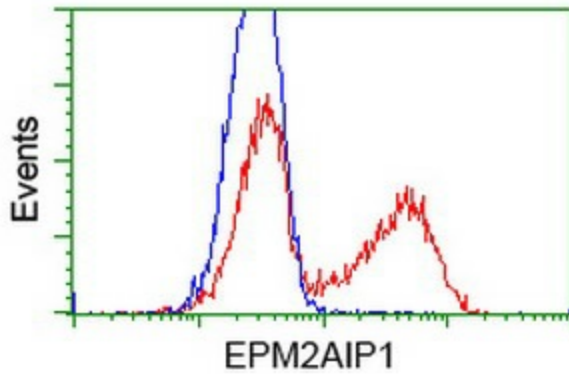
Immunohistochemical staining of paraffin-embedded Carcinoma of Human prostate tissue using anti-EPM2AIP1 mouse monoclonal antibody at 1:150 ([TA501930])



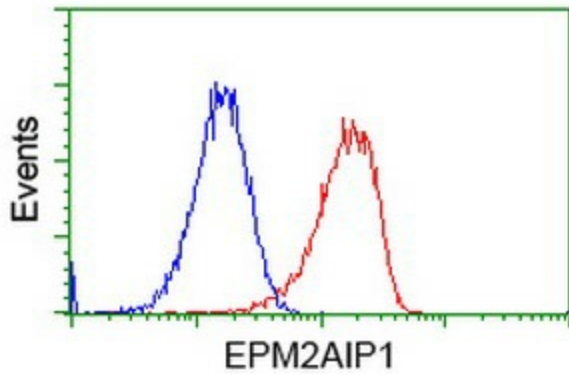
Immunohistochemical staining of paraffin-embedded Carcinoma of Human bladder tissue using anti-EPM2AIP1 mouse monoclonal antibody at 1:150 ([TA501930])



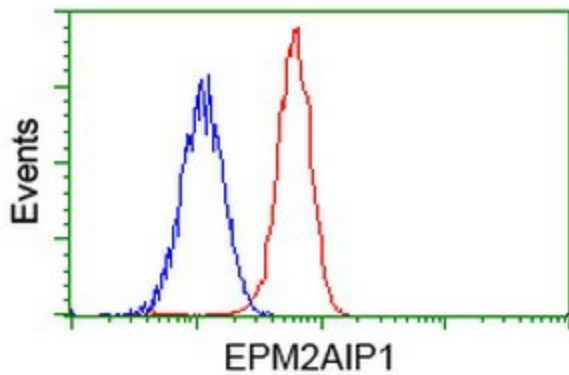
Anti-EPM2AIP1 mouse monoclonal antibody ([TA501930]) immunofluorescent staining of COS7 cells transiently transfected by pCMV6-ENTRY EPM2AIP1 ([RC209239]).



HEK293T cells transfected with either [RC209239] overexpress plasmid (Red) or empty vector control plasmid (Blue) were immunostained by anti-EPM2AIP1 antibody ([TA501930]), and then analyzed by flow cytometry.



Flow cytometric Analysis of HeLa cells, using anti-EPM2AIP1 antibody ([TA501930]), (Red), compared to a nonspecific negative control antibody (TA50011), (Blue).



Flow cytometric Analysis of Jurkat cells, using anti-EPM2AIP1 antibody ([TA501930]), (Red), compared to a nonspecific negative control antibody (TA50011), (Blue).