

## Product datasheet for **CF501915**

### ZNRD2 Mouse Monoclonal Antibody [Clone ID: OTI2F5]

#### Product data:

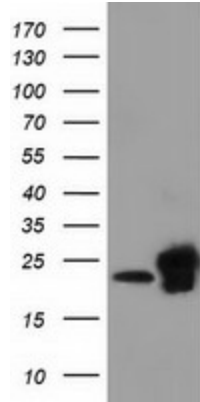
Product Type:	Primary Antibodies
Clone Name:	OTI2F5
Applications:	FC, IF, IHC, WB
Recommended Dilution:	WB 1:2000, IF 1:100, FLOW 1:100, IHC: 1:150
Reactivity:	Human, Mouse, Rat
Host:	Mouse
Isotype:	IgG1
Clonality:	Monoclonal
Immunogen:	Full length human recombinant protein of human SSSCA1 (NP_006387) produced in HEK293T cell.
Formulation:	Lyophilized powder (original buffer 1X PBS, pH 7.3, 8% trehalose)
Reconstitution Method:	For reconstitution, we recommend adding 100uL distilled water to a final antibody concentration of about 1 mg/mL. To use this carrier-free antibody for conjugation experiment, we strongly recommend performing another round of desalting process. (OriGene recommends Zeba Spin Desalting Columns, 7KMWCO from Thermo Scientific)
Purification:	Purified from mouse ascites fluids or tissue culture supernatant by affinity chromatography (protein A/G)
Conjugation:	Unconjugated
Storage:	Store at -20°C as received.
Stability:	Stable for 12 months from date of receipt.
Predicted Protein Size:	21.3 kDa
Gene Name:	zinc ribbon domain containing 2
Database Link:	<a href="#">NP_006387</a> <a href="#">Entrez Gene 10534 Human</a> <a href="#">O60232</a>
Background:	This antigen is recognized by a subset of anti-centromere antibodies from patients with scleroderma and/or Sjogren's syndrome. Subcellular localization has not yet been established. [provided by RefSeq]



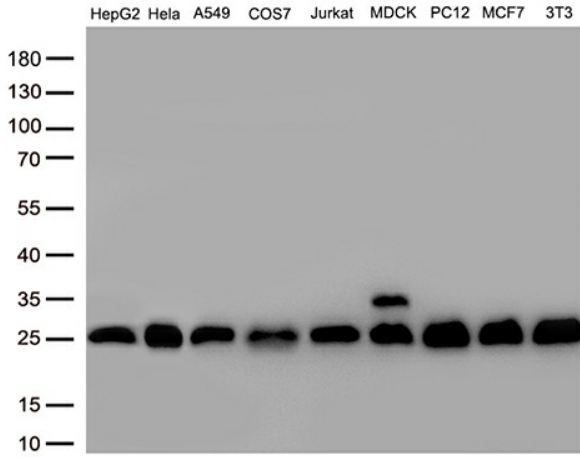
[View online »](#)

Synonyms: p27

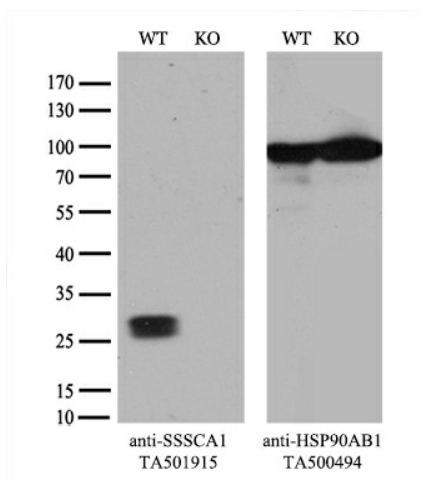
**Product images:**



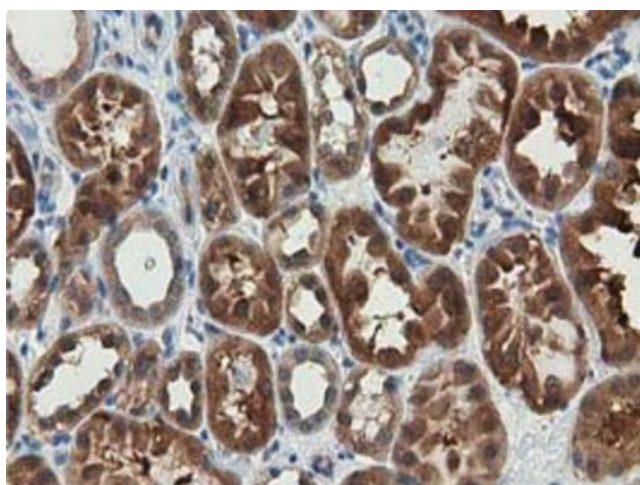
HEK293T cells were transfected with the pCMV6-ENTRY control (Cat# [PS100001], Left lane) or pCMV6-ENTRY SSSCA1 (Cat# [RC201946], Right lane) cDNA for 48 hrs and lysed. Equivalent amounts of cell lysates (5 ug per lane) were separated by SDS-PAGE and immunoblotted with anti-SSSCA1(Cat# [TA501915]). Positive lysates [LY416665] (100ug) and [LC416665] (20ug) can be purchased separately from OriGene.



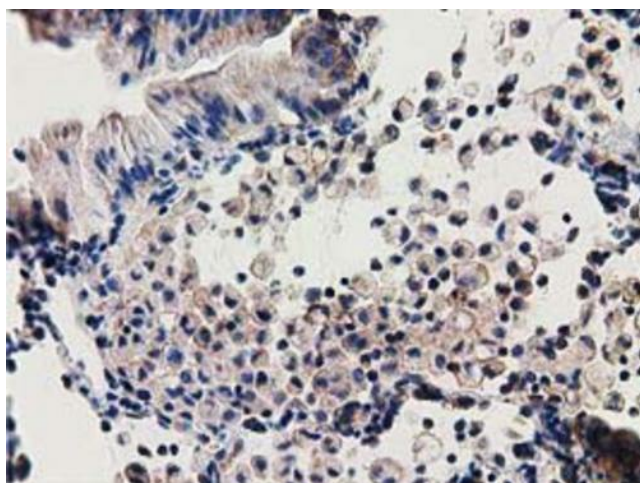
Western blot analysis of extracts (30ug per lane) from 9 cell lines lysates by using anti-ZNRD2 monoclonal antibody ([TA501915], 1:500).



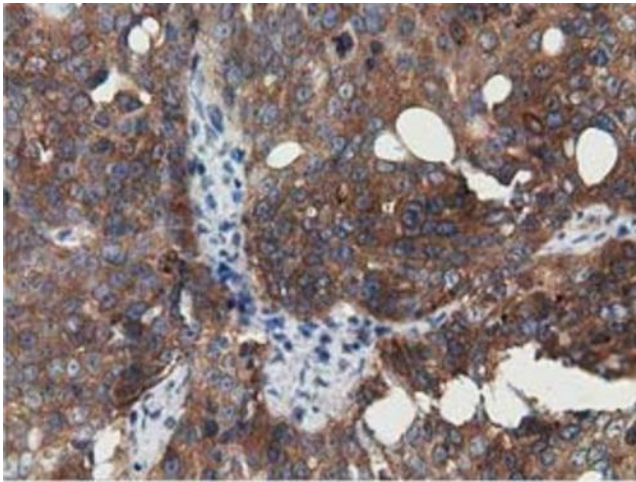
Equivalent amounts of cell lysates (10 ug per lane) of wild-type 293T cells (WT, Cat# LC810293T) and SSSCA1-Knockout 293T cells (KO, Cat# [LC842424] ) were separated by SDS-PAGE and immunoblotted with anti-SSSCA1 monoclonal antibody [TA501915] (1:2000 `). Then the blotted membrane was stripped and reprobed with anti-HSP90 antibody as a loading control.



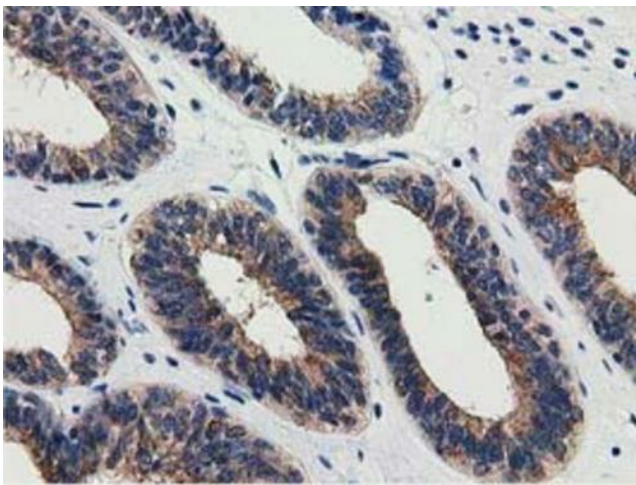
Immunohistochemical staining of paraffin-embedded Human Kidney tissue within the normal limits using anti-SSSCA1 mouse monoclonal antibody. ([TA501915]). Heat-induced epitope retrieval by EDTA solution buffer pH 8.0 at 120°C for 3 min.



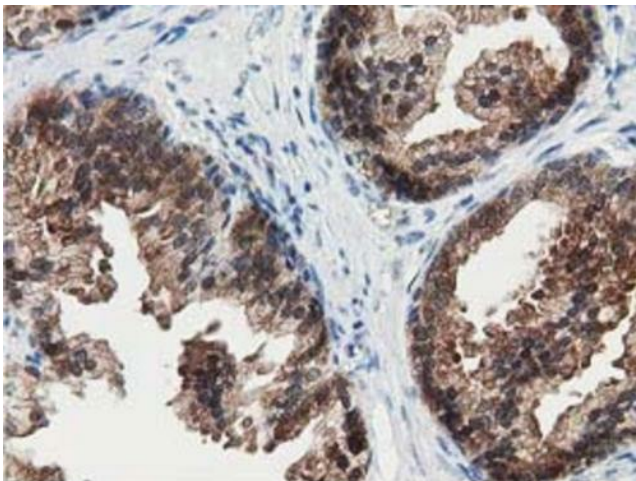
Immunohistochemical staining of paraffin-embedded Carcinoma of Human lung tissue using anti-SSSCA1 mouse monoclonal antibody. ([TA501915]). Heat-induced epitope retrieval by EDTA solution buffer pH 8.0 at 120°C for 3 min.



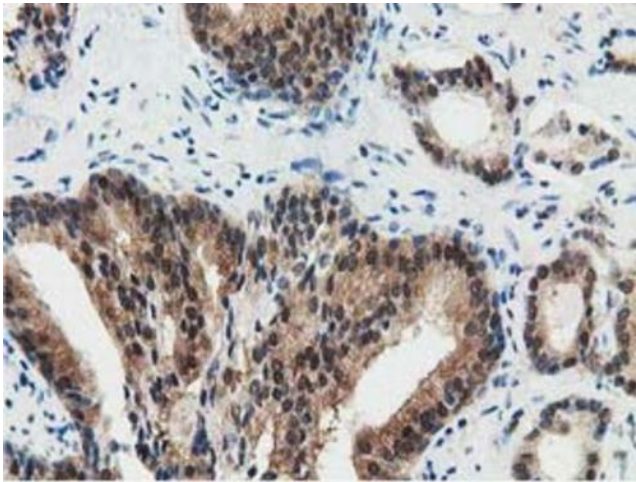
Immunohistochemical staining of paraffin-embedded Adenocarcinoma of Human ovary tissue using anti-SSSCA1 mouse monoclonal antibody. ([TA501915]). Heat-induced epitope retrieval by EDTA solution buffer pH 8.0 at 120°C for 3 min.



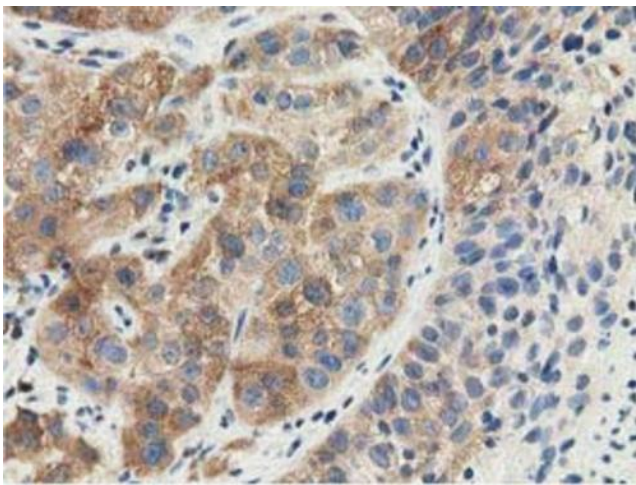
Immunohistochemical staining of paraffin-embedded Adenocarcinoma of Human endometrium tissue using anti-SSSCA1 mouse monoclonal antibody. ([TA501915]). Heat-induced epitope retrieval by EDTA solution buffer pH 8.0 at 120°C for 3 min.



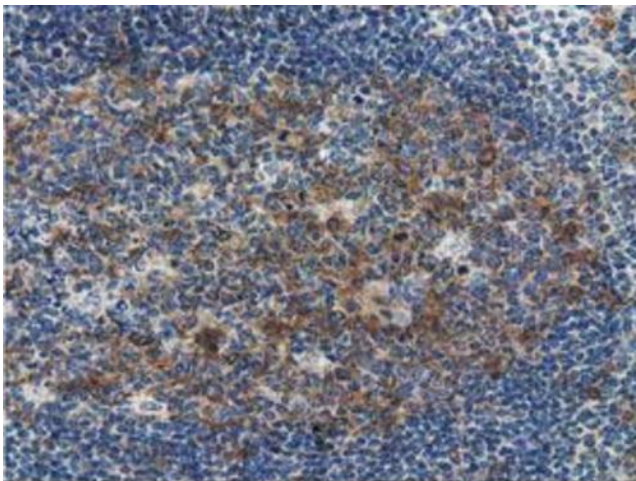
Immunohistochemical staining of paraffin-embedded Human prostate tissue within the normal limits using anti-SSSCA1 mouse monoclonal antibody. ([TA501915]). Heat-induced epitope retrieval by EDTA solution buffer pH 8.0 at 120°C for 3 min.



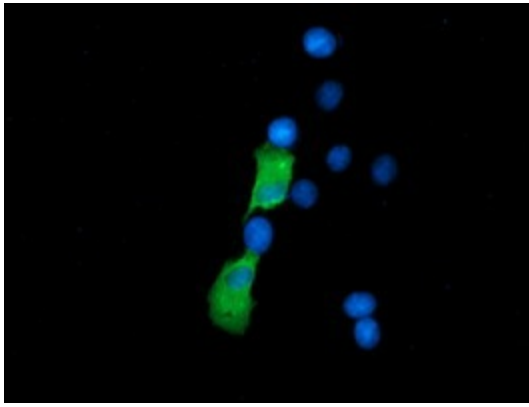
Immunohistochemical staining of paraffin-embedded Carcinoma of Human prostate tissue using anti-SSSCA1 mouse monoclonal antibody. ([TA501915]). Heat-induced epitope retrieval by EDTA solution buffer pH 8.0 at 120°C for 3 min.



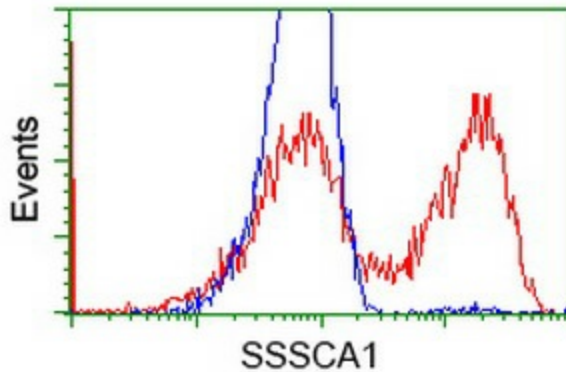
Immunohistochemical staining of paraffin-embedded Carcinoma of Human bladder tissue using anti-SSSCA1 mouse monoclonal antibody. ([TA501915]). Heat-induced epitope retrieval by EDTA solution buffer pH 8.0 at 120°C for 3 min.



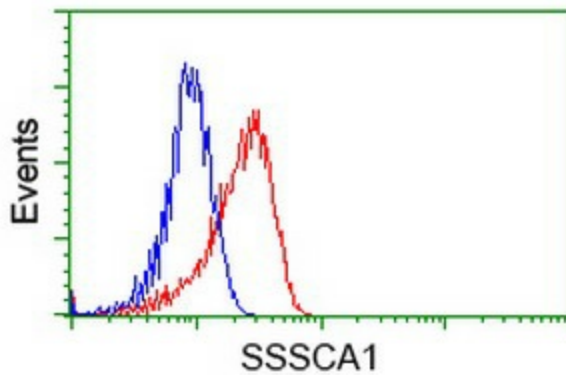
Immunohistochemical staining of paraffin-embedded Human lymph node tissue within the normal limits using anti-SSSCA1 mouse monoclonal antibody. ([TA501915]). Heat-induced epitope retrieval by EDTA solution buffer pH 8.0 at 120°C for 3 min.



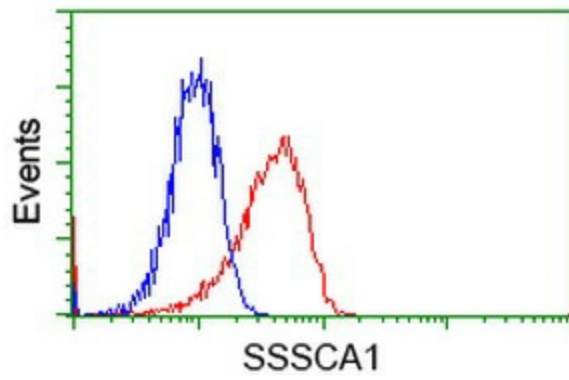
Anti-SSSCA1 mouse monoclonal antibody ([TA501915]) immunofluorescent staining of COS7 cells transiently transfected by pCMV6-ENTRY SSSCA1 ([RC201946]).



HEK293T cells transfected with either [RC201946] overexpress plasmid (Red) or empty vector control plasmid (Blue) were immunostained by anti-SSSCA1 antibody ([TA501915]), and then analyzed by flow cytometry.



Flow cytometric Analysis of HeLa cells, using anti-SSSCA1 antibody ([TA501915]), (Red), compared to a nonspecific negative control antibody (TA50011), (Blue).



Flow cytometric Analysis of Jurkat cells, using anti-SSSCA1 antibody ([TA501915]), (Red), compared to a nonspecific negative control antibody (TA50011), (Blue).