

Product datasheet for **CF501891**

PPWD1 Mouse Monoclonal Antibody [Clone ID: OTI1B2]

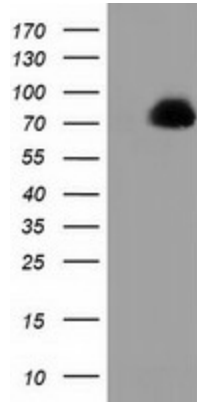
Product data:

Product Type:	Primary Antibodies
Clone Name:	OTI1B2
Applications:	IF, IHC, WB
Recommended Dilution:	WB 1:2000, IF 1:100, IHC: 1:150
Reactivity:	Human, Mouse, Rat
Host:	Mouse
Isotype:	IgG1
Clonality:	Monoclonal
Immunogen:	Full length human recombinant protein of human PPWD1 (NP_056157) produced in HEK293T cell.
Formulation:	Lyophilized powder (original buffer 1X PBS, pH 7.3, 8% trehalose)
Reconstitution Method:	For reconstitution, we recommend adding 100uL distilled water to a final antibody concentration of about 1 mg/mL. To use this carrier-free antibody for conjugation experiment, we strongly recommend performing another round of desalting process. (OriGene recommends Zeba Spin Desalting Columns, 7KMWCO from Thermo Scientific)
Purification:	Purified from mouse ascites fluids or tissue culture supernatant by affinity chromatography (protein A/G)
Conjugation:	Unconjugated
Storage:	Store at -20°C as received.
Stability:	Stable for 12 months from date of receipt.
Predicted Protein Size:	73.4 kDa
Gene Name:	peptidylprolyl isomerase domain and WD repeat containing 1
Database Link:	NP_056157 Entrez Gene 238831 MouseEntrez Gene 294711 RatEntrez Gene 23398 Human Q96BP3
Synonyms:	KIAA0073

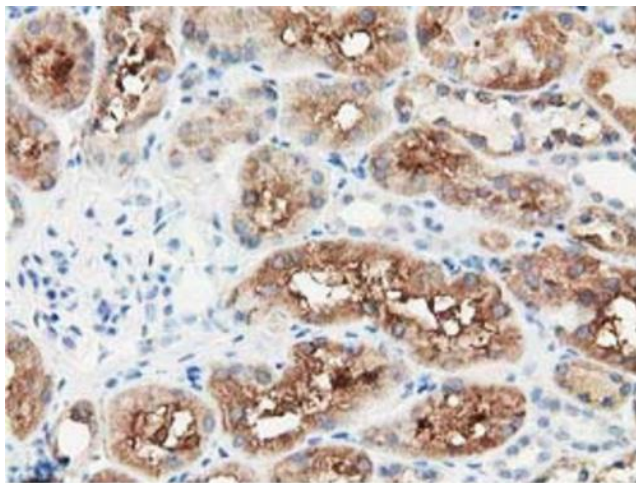


[View online »](#)

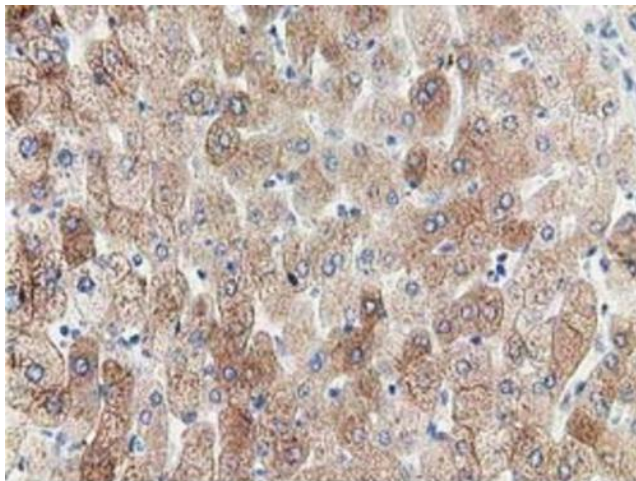
Product images:



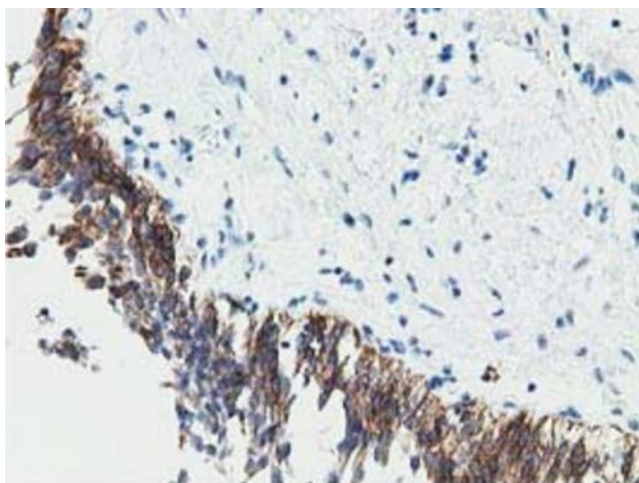
HEK293T cells were transfected with the pCMV6-ENTRY control (Cat# [PS100001], Left lane) or pCMV6-ENTRY PPWD1 (Cat# [RC204570], Right lane) cDNA for 48 hrs and lysed. Equivalent amounts of cell lysates (5 ug per lane) were separated by SDS-PAGE and immunoblotted with anti-PPWD1 (Cat# [TA501891]). Positive lysates [LY414604] (100ug) and [LC414604] (20ug) can be purchased separately from OriGene.



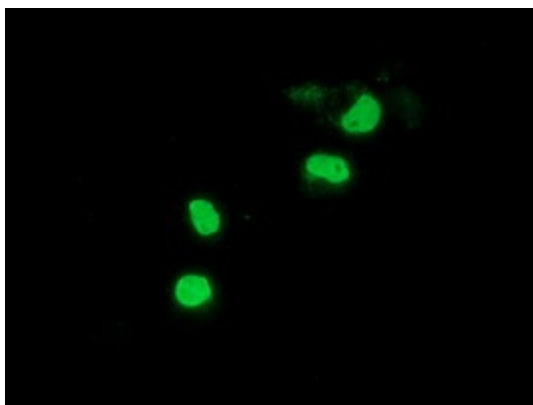
Immunohistochemical staining of paraffin-embedded Human Kidney tissue within the normal limits using anti-PPWD1 mouse monoclonal antibody. ([TA501891])



Immunohistochemical staining of paraffin-embedded Human liver tissue within the normal limits using anti-PPWD1 mouse monoclonal antibody. ([TA501891])



Immunohistochemical staining of paraffin-embedded Human bladder tissue within the normal limits using anti-PPWD1 mouse monoclonal antibody. (TA501891)



Anti-PPWD1 mouse monoclonal antibody (TA501891) immunofluorescent staining of COS7 cells transiently transfected by pCMV6-ENTRY PPWD1 (RC204570).